

PHILLIP ISLAND & SAN REMO

# ADVERTISER

YOUR COMMUNITY VOICE!

Wednesday, September 25, 2024

\$1.80 Incl. GST



**Bend it like  
the Breakers!**

Congratulations to the Phillip Island Breakers women's team, who won the Gippsland Soccer League (GSL) Grand Final on the weekend, beating rivals Leongatha. The win capped off a successful season for the club, which was named the GSL Club of the Year. With three teams in the running for a premiership, it was the jubilant women who brought back the silverware. Read the full report as well as all the weekend's action in Sport: page 24 - 32.

**SOUTH COAST FLOORING XTRA**  
A FABULOUS FLOORING EXPERIENCE  
155 Thompson Avenue, Cowes | 03 5952 1488

**COWES SELF STORAGE**  
**COWES BOAT CARAVAN RV STORAGE**  
24 hr Video Surveillance  
**FULLY SECURED - FULL SURVEILLANCE**  
Ray White Phillip Island  
41 Thompson Avenue, Cowes  
5952 2799

**Council Election**  
Page 9-13  
**Holiday Guide**  
Page 16-18  
**Island Home**  
Page 20-21

**VOTE 1** **Ron Bauer**  
for the now expanded  
Island Ward, Bass Coast Shire

- Act for the Island's community needs
- Responsible use of ratepayers money
- Freeze the waste levy
- Collection of the red bin every week from Xmas to Australia Day
- 1 free hard rubbish pick up per year
- Parking solutions for the Island that work
- Get a government to commit to lasting erosion measures
- Strongly advocate for projects that we actually need:
  - Prioritise the sporting precinct opposite the RSL
    - The aquatic centre
    - New football oval
    - Basketball courts
  - Complete existing bike tracks before starting any new ones
    - No bike track along the foreshore from Cowes to Ventnor; preserve the foreshore habitat

<h1>PHILLIP ISLAND</h1> <p>7 DAY WEATHER FORECAST</p>	Wed/Sep25  RAIN, EASING 9 15	Thu/Sep26  CLOUDY 9 13	Fri/Sep27  PARTLY CLOUDY 7 16	Sat/Sep28  MOSTLY SUNNY 9 21	Sun/Sep29  SHOWERS 13 19	Mon/Sep30  MOSTLY SUNNY 10 15	Tue/Oct1  PARTLY CLOUDY 10 18
---	---------------------------------------	---------------------------------	--	---------------------------------------	-----------------------------------	--	--



Researcher Bec Stuart earlier this month spent two hours flying a drone over more than 2km of beach, from Erewhon Point to the end of Silverleaves, as part of a six-year drone coastal monitoring project. The monitoring is carried out every six to eight weeks through the year.

## Drones monitor erosion hotspots

### SILVERLEAVES

Research officers took advantage of calm conditions earlier this month to carry out drone photography of Silverleaves and Cowes east erosion hotspots, as part of an ongoing six-year research study.

Department of Energy, Environment and Climate Action (DEECA) science officer Bec Stuart spent about two hours flying the drone over more than 2km of beach, from Erewhon Point to the end of Silverleaves residential area, at low tide from the dunes to the water line.

The drone takes hundreds of

photos, at 100 metres altitude, to measure sand movement. Bec said that for the first time, she flew the drone further east to Observation Point, where according to a new report, sand is accumulating.

The drone coastal monitoring program started in 2018, and has been carried out every six to eight weeks since it commenced.

DEECA recently released its long-awaited report Observation Point to Silverleaves: Gippsland West Coastal Processes Studies.

It stated significant loss of private property and public assets may occur at Silverleaves and in some areas of Cowes East

in the next five to 10 years.

The report stated that in the past two years, about 16 metres of foreshore has been lost to erosion in a "hotspot" near Sanders Road

Forceful views aired by affected property owners at a community meeting in Cowes to discuss the report, resulted in the State Government committing to provide immediate, temporary solutions, which local residents are now awaiting.

The report is available online with a community survey open until September 27 for comment ([engage.vic.gov.au/silverleaves-coastal-adaptation-pathways](https://engage.vic.gov.au/silverleaves-coastal-adaptation-pathways)).



The public toilets on the Cowes Foreshore will be closed until January 2025, when roof waterproofing works are anticipated to finish.

## Cowes foreshore toilets closed until January

### INFRASTRUCTURE

The public toilets at the bottom of Thompson Avenue on the Cowes foreshore will be closed until January 2025, when roof waterproofing works are anticipated to finish.

The project will address water leakage issues relating to the tiled roof surface which threaten the structural integrity of the block and may lead to more significant structural damage if left untreated, according to the council website.

Council say the issue has resulted in temporary closures often around key events such as the Moto GP.

The \$380,000 works will involve the removal of tiles on the roof viewing platform, and the installation of a waterproof membrane, pavers, and re-installed furniture.

Stair access on both sides of

the building from The Esplanade to the foreshore will be closed for most of the duration of the project.

The grassed area between the viewing deck and The Esplanade will be fenced off and utilised by contractors for site amenities, storage and general construction requirements.

Council said the project will have minimal impact on community movement through Thompspon Avenue and The Esplanade, and will not impact access to the foreshore and surrounding beaches.

Appropriate traffic control measures will be in place throughout the duration of the works, including reduced speed limits.

The nearest alternative public toilet facilities are located at Erewhon Point (opposite Findlay Street), with public toilets also located at Berninnet, 91-97 Thompson Avenue.

**Melina BATH MP**  
THE NATIONALS MEMBER FOR EASTERN VICTORIA REGION

2/181 Franklin St, Traralgon VIC 3844  
melina.bath@parliament.vic.gov.au  
5174 7066  
MelinaBathMLC

**RUSSELL BROADBENT**  
TRUST | REASON | COMMONSENSE

FOLLOW ME ON:  
f i X v

TO KEEP UPDATED ON THE LATEST ISSUES

(03) 5623 2064  
46C Albert St Warragul VIC 3820  
russell.broadbent.mp@aph.gov.au

Authorised by Russell Broadbent MP, Independent Federal Member for Monash, Warragul

Vote **1**  
**JON TEMBY**

Working together for a sustainable future

**Western Port Ward**  
**Bass Coast Shire Council**

Authorised by J. Temby, 500 West Creek Rd, West Creek VIC 3992.

Vote **1** **Tracey Bell**  
Island Ward Candidate  
Bass Coast Shire Council

Come and have a cuppa with your local candidate  
Saturday 28th September  
9.30-12  
behind St Philip's,  
cnr Thomson Ave & Church St, Cowes

- Building community
- Youth engagement
- Sustainable development
- Responsible tourism

Authorised by T. Bell, PO Box 1106, Cowes, Vic 3922

**COASTAL**  
REFRIGERATION & AIR-CONDITIONING  
Refrigerant Trade Auth No: AU 51426 - PI 48651

- Service Agent for Daikin
- Commercial & Domestic Refrigeration & Air Conditioning
- Licensed Split System Installer • Sales, Installation and Service

**DAIKIN**

**AH'S COMMERCIAL BREAKDOWN EXPERT AFTER SALES SERVICE**

**Rick North** – Servicing Phillip Island & Surrounding Areas  
Phone: **5678 5190** – Factory 1, 60 Genista St, San Remo

www.coastalrefrigandaircon.com.au

coastal\_refrig\_and\_aircon Coastal Refrigeration & Airconditioning

# Ventnor permit rejected, thanks to new policy

## PLANNING

A Ventnor planning development for two new double storey homes – which received 24 objections – has been refused by Bass Coast Shire councillors, the first test of a newly-adopted planning policy.

The planning permit for 31 Fisher Street was to demolish an existing single dwelling and build the two new homes, also subdividing the land into two separate lots, with vegetation removal.

At least 15 objections are required for a permit to be voted on by councillors and the 24 objections came before council.

Objectors were concerned about over-development, but shire planners disagreed arguing the proposal covered 43 per cent of the land, “which is well below the maximum allowable site coverage of 60 per cent”.

There were also concerns about traffic and loss of neighbourhood character.

Shire planners recommended approval, but councillors disagreed, with Cr David Rooks successfully moving an alternative motion to refuse the permit based on a new planning policy that aims to control growth.

Cr Rooks said the Bass Coast housing strategy, adopted earlier this year, classified towns as minimum, incremental or substantial growth areas across the shire for the next 15 years.

“In Ventnor it was minimal change, that was supported by the residents. Minimal change is where subdivisions and multi dwellings should be discouraged,” Cr Rooks said.

“This kind of development (Fisher Street) is not what the strategy wants or the residents want.”

Fellow councillors agreed.

Cr Rochelle Halstead said the shire’s housing strategy and neighbourhood character strategy enabled councillors to push back on developments that “attack” the character of towns.

Cr Ronnie Bauer said the developer had “gone for broke” by trying to build as much as possible and that the permit needed to be amended to meet local expectations.

Cr Michael Whelan said the planning scheme offered a “cookie cutter approach” to development.



A Ventnor farm-tourism business has been given approval to develop a further accommodation cabin, brushing off 16 objections.

“The planning scheme puts into place an underlying assumption of supporting development,” Cr Whelan said.

“So we have developer led changes that eat away at the crust of places like Phillip Island.

“We need to be mindful of saying that’s where we need to accommodate more people and have the infrastructure to service that growth.”

## Approved

Meanwhile, a Ventnor farm-tourism business has been given approval to develop a further accommodation cabin, brushing off 16 objections.

Five Acres at 46 McHaffies Lane, Ventnor – which already has three single storey cabins and a function centre in a converted farm shed – will build one further cabin after Bass Coast Shire planners and councillors supported the project.

At least 15 objections are re-

quired for a permit to be voted on by councillors and 16 objections were received

Objectors argued it was an overdevelopment, a non-agriculture use in the farming zone, with noise and light pollution.

Objectors said the development was inconsistent with the State Government’s declaration of the area as a Distinctive Areas and Landscapes (DAL).

But planners responded saying the land was not located in a significant landscape overlay or on a prominent hilltop, while the cabin would not be prominent and conformed with existing cabins.

Five Acres opened in 2021 on the two-hectare property, which is part of one of the most historic sites on Phillip Island, a sheep run for early settlers the McHaffie brothers; and the land was used for one of the first artificial insemination farms in Australia.



Interviewed by the MotoGP team as part of a mini-documentary due to be released later this year, Pino’s Rosa Scarlato looked at ease in front of the camera.

## Racetrack, penguins, Rosa and Pino’s

### MOTOGP

Last week Rosa Scarlato, the widely adored matriarch of Pino’s Trattoria, was interviewed by a team from the MotoGP for a mini-documentary due to be released later this year.

Speaking to the Advertiser, Rosa said the MotoGP community has been “like a family to (her)” since the race was first held on the island in 1989 – the first motorcycle Grand Prix World Championship round in Australia.

Rosa also highlighted the connection between her Italian Calabrian heritage, Phillip Island, and the European MotoGP community.

“Whenever they come here,” Rosa said of Italian racers, “they feel like they’ve found a second family, because we speak their language.

“But even German or Spanish people, they all feel very honoured to come (to Pino’s), because they come here from Europe and find Italian food.

“The excitement that MotoGP brings to the island, and all the different nationalities, it’s fantastic.”

Rosa also spoke about European’s love for the island’s race-

track, and said the track “100 per cent” puts the island on the map internationally.

“Whenever I go to Italy and they see me, they say the track is the most beautiful in the world,” Rosa said.

“Because they’re surrounded by water, and also they say the people are very nice.”

The day before the interview, Rosa had been out on the track for a ‘hot lap’ in a Lamborghini.

“It was very fast, 260,” Rosa said, praising her “very good driver”.

“I’ve been in the team before with Ferrari and Lamborghini. So I was very relaxed.”

Speaking to the MotoGP team, Rosa looked at ease in front of the camera, recounting when the race was moved from the island and petitioning then-Premier Jeff Kennet to have the race returned to the island.

“I hope we never lose it, because if we lose the MotoGP, it’s going to be a very big loss for the community,” Rosa said.

Of Phillip Island, Rosa spoke with obvious pride.

“I think there’s three major things: there’s the racetrack, penguins, and Pino’s,” Rosa said.

“I mean, what else could they want?”

*“Funeral Care, With Compassion,  
Respect & Dignity”*

Locally owned and operated.

Professional, affordable Funeral Services available 24 hours a day 7 days a week.

Servicing all types of disposition including burial, cremation, natural burial and aquamation on the Bass Coast including Gippsland.



YOUR FUNERAL, YOUR WAY

Contact: Michelle Brown, 0448 602 005

hello@basscoastfuneralservice.com.au | www.basscoastfunerals.com.au



HAS MOVED TO

**7/28 The Concourse, Cowes**

(NEXT TO HEALTH ON COURSE)

**Lawn Mower and  
Power Equipment Repairs + Sales**

# Millie is Channel 9's charity telethon star

## CANCER FUNDRAISER

Seven-year-old Newhaven Primary student Millie Churchill will be the Victorian star of Channel 9's Footy Show Grand Final Eve: My Room Telethon.

On the eve of the AFL Grand Final, the telethon (September 26 at 7.30pm) will raise critical funds for the My Room Children's Cancer Charity.

Millie, from San Remo, was diagnosed in June 2023 with a solid mass tumour in her pelvis, and will be the face of the telethon.

Since that date, the grade two student has undergone chemotherapy, two operations and radiation and is currently in maintenance phase, with daily oral chemotherapy at home and weekly visits to Monash Children's Hospital as she battles her illness.

The telethon will air live from the Palms at Crown Melbourne on Channel 9 and 9Now and will feature Eddie McGuire, Alicia Loxely and Clint Stanaway, alongside The Sunday Footy Show team.

Millie's story will feature on the show, as well as campaigns in The Age, billboards around Melbourne and on social media.

Millie's mum Paige Nuske and dad Dirk Churchill said the family was grateful for the opportunity to share Millie's story for a good cause like My Room, a charity that has supported them through difficult times.

"It's an honour and we are incredibly proud of Millie, her resilience, strength and ability to continue to see the brighter side of life despite all her struggles," said Paige, who is a local nurse working in outpatient specialist clinics.

"The show is a whole new experience and has brought Millie so much joy and excitement.

"It has also given our family something to look forward to, a welcome



Grade two Newhaven Primary student Millie Churchill, an Essendon supporter, is to be the face of Channel 9's Footy Show Grand Final Eve: My Room Telethon on Thursday September 26 at 7.30pm, raising critical funds for My Room Children's Cancer Charity.

distraction."

Paige said it was difficult to explain the importance of charities like My Room.

"Having a child diagnosed with cancer is devastating and the importance of day-to-day life fades as you focus entirely on getting your child well again.

"But life doesn't really stop and before you even realise you need support it arrives through charities like My Room."

She said Millie spent nearly six months in hospital, before Christmas last year, with charities allowing the family to be by her side, also funding supportive care like physiotherapy as she recovered from gruelling cycles of chemotherapy and surgery to have the tumour removed.

"Every day there was a knock at the hospital room door, with an offer of support."

My Room also carries out cancer research and Millie has taken part in a trial.

### Community

Paige said the Phillip Island community and the

school had embraced their family with generosity.

"Millie's teacher - last year when she was in grade one - often reached out and organised letters from her classmates," Paige said, adding while Millie missed six months last year, she has been at school this year.

"She also arranged for Camp Quality to visit the school, to assist other students to cope and better understand Millie's cancer diagnosis.

The family moved to San Remo more than a decade ago, with Dirk - who is a supermarket store manager - originally from Wonthaggi.

She said siblings Nathaniel (10 years) and Jude (six years) will be at the telethon, along with dad, nan and pop, but not Millie's rabbits nor her two pet dogs Nina and Lottie.

Millie is an Essendon supporter and her favourite players are Peter Wright and Andy McGrath.

Details: My Room Grand Final Spectacular, Thursday September 26, 7.30pm, Channel 9 and 9Now.

# Tourism merger deferred ... for now

## BUSINESS

A Phillip Island councillor has defended the island's peak tourism board, Destination Phillip Island (DPI) which is under threat of being merged into a larger regional partnership.

Councillors at the Bass Coast Shire Council September meeting were debating the merits of its \$42,000 annual support contribution to Destination Gippsland to December 2025, following its similar support for Destination Phillip Island (DPI) over the same period.

Cr Rochelle Halstead said council should continue to support tourism boards, but to spend resources across two partnerships was "unfair" and they should look for "efficiency and collaboration opportunities".

She said the State Government's 2019 Visitor Economy Recovery and Reform Plan examined amalgamating tourism boards.

"There is no other local government in the state that has this requirement (to support two boards)," Cr Halstead said.

"Of course we support businesses and tourism, which is the cornerstone of the economy. I just think we need to do it better.

"Hopefully it (the State Government's plan) will mean Bass Coast will have



For now Phillip Island's peak tourism board is safe from amalgamation into one larger region-wide tourism association. However DPI general manager Kim Storey has said future transition is still under discussion.

one representative group that is doing all the same work, possibly more."

However Cr Michael Whelan said DPI and Destination Gippsland do a "great job", but DPI was focused on the best outcome for Phillip Island.

"What would benefit this region?" asked Cr Whelan, adding he was on the DPI board eight years ago when they were also under threat.

"We really need something that addresses the interests of our businesses here, not what addresses the bureaucratic structures out of Spring Street.

"A word of caution: reviews don't always turn out the best outcomes for

business efficiencies."

DPI general manager Kim Storey said "any future transition" was still under discussion and was being explored with the State Government.

"Our current state and local government funding has been extended until December 2025, so at this stage no changes are imminent," Ms Storey told the Advertiser.

"The work delivered by DPI is essential to the region's visitor economy, supporting industry and the aspirations of the newly released destination management plan."

Councillors voted to support Destination Gippsland to December 2025.

## BASS COAST SHIRE ISLAND WARD

# Marnie Chadwick

VOTE  
**1**

I am 45 years of age and a mother of two, with a strong knowledge of, and connection to the Island Ward Community, in which I have lived and worked throughout all of my life.

### PRIORITIES I STAND FOR:

- \* Prioritise future sport, pool & Recreation Reserve, complete re-zoning & shovel ready for future government funding, ahead of current proposed \$25 million redesign of Thompson Ave.
- \* Protect our unique Coastline, Farmlands & Ecosystem, starting with silverleaves foreshore
- \* Council transparency & accountability are a must
- \* Proudly showcase our history & historical artifacts inside & outside of Berninleit ~ new cultural centre
- \* No expansion of town boundaries
- \* Short-term & long-term carpark planning needed
- \* Weekly Red BIN collection in January
- \* If elected I pledge to listen to community concerns; individuals, families, small businesses and our overall diverse community. I place great importance on community consultation moving forward

Authorised by Marnie Chadwick  
PO BOX 4076, COWES 3922

## Handley & Anderson

FUNERAL DIRECTORS

Servicing South Gippsland & Phillip Island

Locally owned and operated by

**Scott & Sharon Anderson 5672 1074**

Caring and personal 24 hour Service

**Main office Wonthaggi**  
3085 Loch-Wonthaggi Road, Wonthaggi  
(P.O. Box 35, Wonthaggi)

**Cowes office (by appointment)**  
15 Warley Avenue, Cowes 5952 5171

Email: info@handafunerals.com.au  
www.handleyandersonfunerals.com.au

A.F.D.A.

# Island charity's 'gift to the world'

**CHARITY**

Mat Bowtell and the team at Free 3D Hands have announced the open-source release of their long-awaited kinetic arm.

The prosthetic arm will be "revolutionary" for those with trans-radical arm differences across the world and is the culmination of over 4,000 hours of engineering, design and testing over nearly three years.

The Newhaven based charity said the life-changing "gift to the world" can be manufactured for less than \$20 in materials, ensuring people across the globe, especially in under served communities, can access the life-changing technology.

Open-sourcing the design allows anyone with access to a 3D printer to download the design files and make their own devices, creating an exponential global impact.

Lynne Blackford's nine-year-old daughter was born a below elbow amputee, and says she is most excited about the possibility of her daughter learning to ride a bike.

**Free technology**

Lynne contacted Mat Bowtell around three years ago after the release of his Kinetic Hand, enquiring about a below elbow device.

At the time Matt told Lynne while he didn't have one yet, he was working on one. Lynne said she has been "eagerly following" his prog-



Mat Bowtell with Dylan Alcott and the Kinetic Arm designed by the team at Free 3D Hands, which has now been released on open source.

ress since.

Lynne said she was greatly excited about the ways in which the new freely available technology could change her daughter's life.

"She's had an interesting relationship with prosthetics in the past," Lynne said.

"Traditional prosthetics are quite heavy, and the little hand opens and closes but it actually doesn't open very wide.

"So it's not like you can use it to grip onto handlebars or grip a cup or something like that.

"I think the one (Mat's) made looks more versatile and it's lighter.

"I guess what I'm excited about is whether or not it can be used with bike riding, because that's been a mental

stumbling block for her.

"With other prosthetics, she's attached to the bike. I think she fears that if she falls off the bike, then she falls with the bike. So this might be a workaround for her."

Lynne, who lives in Sydney, said "what Mat's doing for Australians is amazing".

"But the reach of what he's doing around the world, particularly for countries that don't have government support for kids, is amazing.

"The fact that he designs them and then he releases the design all over the world at no cost is just incredible."

**"Love, kindness, generosity"**

Upon the open-source release of the Kinetic Arm, Mat Bow-

tell said Free 3D Hands is "an engine that runs on the love, kindness and generosity of others".

"We hope by sharing our designs, even commercial developers of assistive technology will learn from our low-cost ideas and be inspired to bring down the cost of commercially available devices," Mat continued.

Free 3D Hands has provided thousands of free assistive devices to people in over 30 countries since 2019.

Traditional assistive devices cost tens of thousands of dollars, putting them out of reach for 90 per cent of people globally according to the World Health Organisation.

"Ultimately, we want to make assistive technology more affordable and accessible for the millions of people globally who are currently unable to access or afford it," said Mat.

The charity relies entirely on donations to fund the design and development of open-source assistive devices without any government funding.

Those who wish to support Free 3D Hands can make a tax-deductible donation at: [www.free3dhands.org/donate](http://www.free3dhands.org/donate)

All donations go directly towards the research, design and development of open-source assistive devices which are provided free to those in need.



Newhaven Primary Principal Sharyn Munday and MP Jordan Crugnale celebrate the school receiving a State Government grant for maintenance.

## Much needed

**EDUCATION**

Two local schools were among 59 to receive money from a State Government funding program for school maintenance.

Member for Bass Jordan Crugnale announced Bass Coast College and Newhaven Primary School received \$942,752 and \$52,833 respectively under the Planned Maintenance Program (PMP).

The PMP provides funding to address high-priority maintenance issues across government schools to undertake essential work in classrooms and other school buildings such as fixing roofs and replacing windows, painting, and resurfacing floors, as well as some external works like improving pathways.

"As I continue to work for a major upgrade for Bass Coast College's Dudley campus, this funding is for the complete rebuild of 15 ramps and minor work on two ramps ensuring students have good safe access to facilities to match the quality education they receive," said Ms Crugnale.

"It is on top of the College's recent \$569,552 with the majority going to this campus for roof works, repainting and switch board works."

Ms Crugnale also praised Newhaven Primary, saying it was a "great local school".

"I'm pleased they are getting the maintenance funds they need."

For a list of schools receiving funding under the Planned Maintenance Program, visit [schoolbuildings.vic.gov.au/planned-maintenance-program](http://schoolbuildings.vic.gov.au/planned-maintenance-program).



**IF YOU'RE READY TO SWITCH TO ELECTRIC**



**WE CAN HELP**

The SEC is back. We're supporting Victorian homes to go electric and save on energy bills. Find out how you can make the switch.

[secvictoria.com.au](http://secvictoria.com.au)



Authorised by the Victorian Government, 1 Treasury Place, Melbourne

# Will beach signage step up for summer?

**SAFETY**

Phillip Island Nature Parks (PINP) has confirmed planned upgrades to regulatory beach safety signage were completed earlier this year, with further hazard signs expected to be implemented by December.

The upgrades followed in the wake of an horrific summer of drownings across Bass Coast which prompted calls from many in the community for signage to better deter swimmers from using unpatrolled beaches.

According to a spokesperson from PINP, the new beach entry signs incorporate “all the changes recommended” in the 2019 Blackspot Coastal Risk Assessment Report, but resident Stephen Fullarton says the signs are “probably not enough”.

“An option would be to put up a bigger sign clearly warning that (the beach is) dangerous for swimming,” Stephen said.

Earlier this year, Phillip Island Nature Parks CEO Catherine Basterfield told the Advertiser more prominent warnings tailored for high-risk beaches would be ready to roll out “reasonably quickly after the standard signage”.

A spokesperson for PINP last month said the signs are due to be installed by December and are “currently being planned”, requiring coordination between agencies to ensure they are applied in the same way across Bass Coast.

However, Stephen said while improved safety signage would certainly help, many people sim-



According to a spokesperson from PINP, the new beach entry signs incorporate “all the changes recommended” in the 2019 Blackspot Coastal Risk Assessment Report, but resident Stephen Fullarton says the signs are “probably not enough”.

ply don’t engage with the current forms of signage.

“The issue is also when people arrive at the beach, they’re with their families. They don’t want to stand around reading signs all day,” he said.

“They simply go to the beach and think ‘oh wow, it looks fine,’ and jump in the water without realising the dangers and without being able to swim.”

Dr Hannah Calverley, the Manager of Research and Evaluation at Life Saving Victoria

(LSV), also acknowledged the flaws of static signage earlier this year.

“While signage is an important part of public awareness tactics,” said Dr Calverley, “less than 50 per cent of people actually look at static aquatic safety signage.”

**Electronic signage**

A spokesperson for LSV said they have recently launched a Victorian-first interactive water safety sign to provide multilin-

gual, up-to-the-minute information and hazard information on local beaches in Lorne.

“The installation comprises an electronic touchscreen that provides the user with information on weather conditions, hazards, activity-related safety messages and whether the beach is being patrolled by lifesavers,” the spokesperson said.

The electronic sign is currently being trialled at the Lorne Visitor Information Centre and will be assessed as a potential water

safety solution across Victoria.

In 2022, following the Blackspot Report, LSV received Federal funding to trial an interactive, electronic sign to enhance water safety and drowning prevention messaging at Woolamai Beach.

However, as CEO of PINP Catherine Basterfield explained to the Advertiser in March, that the trial was scrapped following the discovery it was prohibited under the Victorian Planning Framework, and it was not within the Nature Parks’ power to change this.

“It might be something we could push in the longer term when planning frameworks are reviewed, but in the short term it was clear that was not going to be able to progress,” Ms Basterfield said.

It remains unclear whether, or when, a similar electronic sign to that in place at Lorne could also be implemented at the Phillip Island Visitor Centre.

“We encourage collaborative efforts for risk control and stress the importance of local water safety plans, encompassing factors crucial for drowning prevention, with signage being one aspect of this multifaceted approach,” a spokesperson for LSV said.

“We anticipate continued collaboration to advance the recommendations delivered to Bass Coast land managers, including Bass Coast Shire Council, Parks Victoria, and Phillip Island Nature Parks in September 2019 designed to create safer aquatic environments for all communities.”

## Vote for candidates connected to your community who live and work local

**David Rooks**

Caring for our community



Seeking re-election for Island Ward Bass Coast Council

Experienced community leader and active local resident (an Islander for 24 years), with Tourism, Human Resources and Teaching Degrees.

I am proud to have supported the following council achievements since 2020:

- Record investment in capital works - 125% increase on previous council term
- Delivered Berninnet Cultural Centre
- Endorsed the Urban Forest Strategy to revegetate our townships
- The upgrade of Rhyll and Cowes boat ramps with Newhaven on its way

Still to do:

- Maintain our town boundaries
- A network of pedestrian and cycling paths
- Continue caring for our land and community.

TO FIND OUT MORE, go to:  
<https://david-rooks.webnode.page/>

**Tim O'Brien**

ISLAND FIRST representation & ACTION



I am a Phillip Island resident, a Gippslander born and bred, writer and editor (and previously owned the Phillip Island Winery - you might have visited).

If elected, my unwavering focus will be:

1. NEW ovals/facilities for Phillip Island Football Netball club. The land is there, the club has WAITED long enough!
2. COASTAL erosion impacting on Silverleaves (and elsewhere). Council must keep DEECA and the State Government on the hook on this.
3. ENVIRONMENTAL protection for Westernport Woodlands to address the disaster of sand mine expansions.
4. A GENERAL rates cap, better support for our farmers.
5. OPPOSITION to the half-baked Bass Coast Unlocking Rural Tourism Strategy (BURT).
6. DESIGNATED 'safe routes' for safer road sharing for e-scooters, bicycles, e-tricycles, and mobility devices for elderly, school kids and community users.

TO FIND OUT MORE, go to:  
<https://TimOBrien.vote>  
fb: Tim O'Brien Candidate for Bass Coast Council  
- Island Ward

**Tracey Bell**

Together we Thrive



I care about a community for everyone – inclusive for people of all ages, cultures, and demographics where all can participate, be engaged, and feel connected and cared for. I stand for:

- Youth engagement: creating opportunities for youth to participate, contribute, and thrive.
- Building community: supporting families, new residents, and visitors to feel connected and cared for.
- Sustainable development: balancing environmental responsibility with economic opportunity.
- Responsible tourism: protecting our natural and cultural heritage for the next generations.

My son and I live, work and learn on Millowl.

I value honesty, transparency, and accountability.

I am passionate about fostering a strong community and seeing Council deliver for Phillip Island.

TO FIND OUT MORE, go to:  
[www.traceybell.com.au](http://www.traceybell.com.au)  
[facebook.com/traceybell4islandward](https://facebook.com/traceybell4islandward)

JO2731AA



# EXPECT NOTHING LESS



## TICKETS ON SALE

# OCTOBER 8

GRANDPRIX.COM.AU

ALBERT PARK CIRCUIT | 13 - 16 MARCH 2025

# Sports Hub emerges as major election issue

## ELECTION

Seven Island Ward candidates made a pitch for votes in next month's council election, at a 'meet the candidates' event last week.

About 120 voters attended the Island Voice event at the Phillip Island RSL where – judging by audience applause – the proposed Cowes future sports hub and community pool is a priority over redesigning the Cowes main street; and concerns about parking should also be addressed.

Existing councillors representing are Ron Bauer and David Rooks, while new faces are: Tracey Bell, Marnie Chadwick, Tim O'Brien, Darrell Silva and John Trigt.

MC for the night and Island Voice president Peter Paul said the nominees had to convince more than 12,000 Island Ward enrolled voters, with more than 35,000 total voters across Bass Coast.

Following Victorian Electoral Commission changes this year, for the first time Phillip Island is a single ward, with Western Port ward now starting at San Remo. The audience and candidates acknowledged little will be achieved if island councillors do not work as a team.

Each candidate gave an initial two-minute pitch, then they were given 90 seconds to answer questions, followed by a final one-minute review of their platform.

Not all the candidates were able to answer all questions

posed by the audience, explaining they were not familiar with all issues.

Peter Paul asked the first questions, including whether candidates supported reassessing current major project priorities; specifically reprioritising the delayed sports hub on the corner of Phillip Island and Ventnor roads, in line with council's own community survey results; ahead of the soon-to-be implemented \$25 million Cowes street masterplan, which will see Thompson Avenue one-way and car spaces removed.

All candidates agreed the sports hub was a priority, and that the main street project did not have the degree of urgency that the provision of additional sports facilities did.

Tim O'Brien received the first applause of the night when – in his introductory pitch – he said it was "simply unacceptable" the Phillip Island Football and Netball Club and other sporting clubs were left waiting while the hub was "put on the backburner for so long".

Marnie said the main street was not broken "so doesn't need to be fixed".

The Hilton Chadwick Reserve – part of the sports hub land – is named after Marnie's father, and she said she was supportive of fast-tracking the hub.

David said the long-term financial plan would be an opportunity to reprioritise projects, and Ron was given applause when he said the sports hub should also have a 50-metre pool.

Candidates were asked how



Island Ward candidates are back, from left: John Trigt, Darrell Silva, David Rooks and Tracey Bell. Front, from left: Marnie Chadwick, Tim O'Brien, and Ron Bauer.

they would resolve parking problems in Cowes and most responded council should stop giving developers parking waivers.

Ron said he supported public/private partnerships to build a multi-storey car park at the transit centre, while Tracey said user pays parking should be explored for visitors only.

Tim did not support paid parking or public/private partnerships, but said there needed to be "creative solutions" using new technologies.

Candidates were asked whether they supported restoring museum items – currently in storage – for display in Berninnet, including historic murals

and tapestry.

All seven said they were supportive, with Tracey saying the space was "wasted" and community groups had been "shafted", while Tim responded the "measure of a community was the respect it accords history".

At the end of the night a community member stood up to explain to the audience the meeting was held at the RSL because Island Voice could not afford to hire the hall at Berninnet.

### Public questions

There were about 15 questions from the public, including one from a Cape Woolamai resident asking whether candidates sup-

ported question time and why David Rooks in 2022 sought to cancel question time.

While all candidates supported question time, David acknowledged "I don't think I can say much that's helpful, other than there are alternatives to the current system".

An audience member asked all candidates whether they lived on the island and did "not come here for their beach house" to which all candidates raised their hands.

Former Phillip Island Shire president John Matthews asked David and Ron about council being "at the bottom of the barrel in community satisfaction surveys".

"Inhouse how do you address these issues?" John asked.

David said council was not at the bottom.

"We are on par or above. Internally it's difficult to address issues from the survey as we don't get transparency from the questioner," David said.

Ron said "it's something we as councillors are mushroomed about".

A Rhyll resident commented there appeared no debate in the council chamber.

"We get a curated version and decisions are made behind closed doors," she said.

Both Ron and David agreed there was "robust debate" in briefings, with Ron saying councillors were polite and did not talk over each other.

David said there could be an opportunity for briefings to be open to the community.

Gift Card

**FLIGHT CENTRE**

*The Airfare Experts*

# Spring Super Sale

## You could win a \$5,000 Flight Centre Voucher\*

Purchase any New or Demonstrator vehicle from September 1 until October 31, 2024 to go into the draw.

Plenty of stock • Great deals • Finance available

\* Offer Valid on the purchase of any new or demonstrator vehicle sold from 01.09.2024 until 31.10.2024 and delivered by 31.10.2024. Not valid in conjunction with any other offer. \$5,000 Flight Centre Voucher is not redeemable for cash. Winner will be drawn at the dealership on 15.11.2024. Winners will be notified by phone. Only vehicles in stock are eligible. LMCT 8179

### Wonthaggi Mitsubishi

346 Bass Highway, Wonthaggi VIC 3995  
T (03) 5672 1122 LMCT 8179  
www.wonthaggimitsubishi.com.au

### Leongatha Mitsubishi

1 Hughes Street, Leongatha VIC 3953  
T (03) 5662 4088 LMCT 8179  
www.leongathamitsubishi.com.au

AUSTRALIA'S FIRST



WHEN ALL SCHEDULED SERVICES ARE COMPLETED AT A MITSUBISHI DEALERSHIP

J002715AC

JA22566



# It's time to cast your vote

The 2024 local council election will be by post, with the Victorian Electoral Commission mailing out ballot papers from October 7.

The ballot packs will be sent to all enrolled voters.

Each pack will contain a ballot paper, candidate statements and a reply-paid envelope to send your vote back in.

We hear plenty of criticism of council and how the shire is run, so now is your chance to elect the councillors you believe will best represent you and your community for the coming four years.

Don't miss this opportunity to be part of local democracy. Ensure your vote is in the mail (or delivered to the election office in Wonthaggi) before 6pm on Friday October 25.

## CANDIDATES

This year, 22 candidates have put themselves forward to represent their community on council.

We have invited the seven candidates for Island Ward and the six candidates for Western Port Ward to be part of this election feature, so they can speak directly to you, the voters, and outline their vision and ideas for the future.

As no one from Phillip Island, San Remo or the Waterline area can vote in the Bunurong Ward, we have not included the nine Bunurong candidates in this feature.

A full list of Bass Coast candidates is available at: [vec.vic.gov.au/voting/2024-local-council-elections/bass-coast-shire-council/nominations](http://vec.vic.gov.au/voting/2024-local-council-elections/bass-coast-shire-council/nominations)

Remember: if you are enrolled it is compulsory to vote in local government elections.

If your address has changed since the roll closed on August 7, you can contact the VEC to get a replacement ballot pack sent to you.

More information: [vec.vic.gov.au/voting/2024-local-council-elections/bass-coast-shire-council](http://vec.vic.gov.au/voting/2024-local-council-elections/bass-coast-shire-council)

## Key dates:

### Monday, October 7 – ballot mail out

This year's election is by postal vote and the Victorian Electoral Commission will begin mailing out ballot packs on October 7.

You can post the ballot pack, or drop it into the election office at 74 McBride Avenue (Old Post Office), Wonthaggi.

### Friday, October 25 – voting closes 6pm

Your completed ballot must be dropped in the mail or hand delivered to the local election office (74 McBride Avenue, Wonthaggi) before 6pm.

### Friday, November 1

All postal votes must be received by 12 noon.

### Friday, November 15

Election result declared.

# Which ward am I in?

There are still three wards in the upcoming election – Island, Western Port and Bunurong – each represented by three councillors.

However since the last council election, the ward boundaries in Bass Coast have changed.

All of Phillip Island is now within Island Ward.

Under the old boundaries, ratepayers in Sunderland Bay, Surf Beach, Cape Woolamai and Newhaven were part of Western Port Ward.

San Remo will remain in Western Port Ward and the

new boundary between Western Port and Bunurong wards, brings the entire North Wonthaggi locality into Western Port Ward.

The boundary between Western Port and Bunurong wards to the east of Korumburra-Wonthaggi Road is

moved north to the Powlett River, leading to a modest reduction in the size of Western Port Ward, and an expansion in the size of Bunurong Ward.

If you're unsure what ward you are in with the new boundaries, the Victorian Electoral

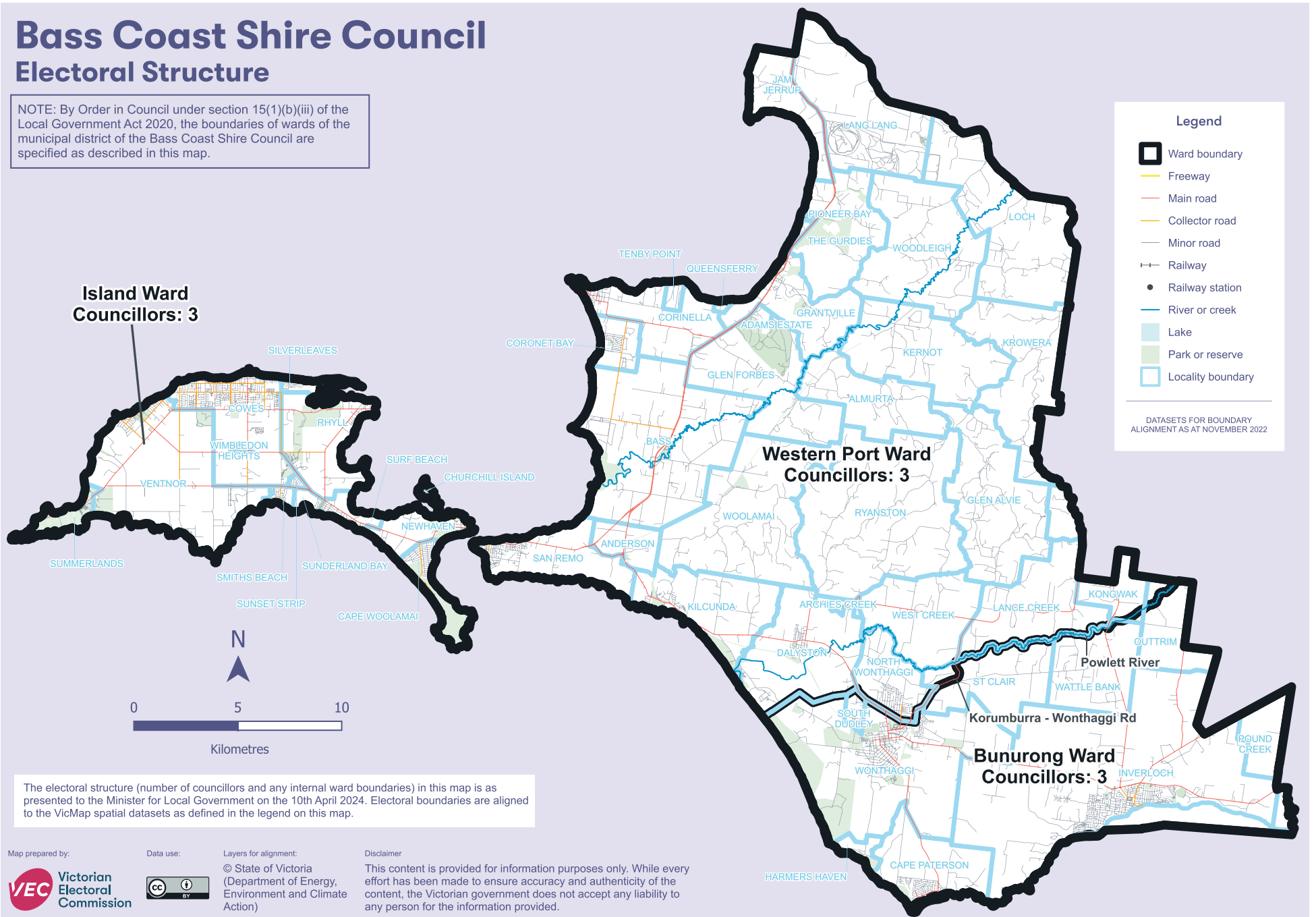
Commission has an interactive map: [maps.vec.vic.gov.au](http://maps.vec.vic.gov.au)

Simply enter your address and it will identify which ward you are in.

The new ward boundaries were announced in May this year, after a review by the Victorian Electoral Commission.

## Bass Coast Shire Council Electoral Structure

NOTE: By Order in Council under section 15(1)(b)(iii) of the Local Government Act 2020, the boundaries of wards of the municipal district of the Bass Coast Shire Council are specified as described in this map.



Map prepared by:



Data use:



Layers for alignment:

© State of Victoria (Department of Energy, Environment and Climate Action)

Disclaimer

This content is provided for information purposes only. While every effort has been made to ensure accuracy and authenticity of the content, the Victorian government does not accept any liability to any person for the information provided.



**Ron Bauer**

For the last 4 years it's been an honour to be your representative for the Island Ward.

I have worked tirelessly to address the issues that affect us Islanders.

I have proven that I stand for sensible commonsense solutions. I achieved:

- 1) a sensible dogs' off leash run on the beach in West Cowes,
- 2) retained the car parking around the proposed football oval in the future recreation reserve,
- 3) got the playground in Rhyll finished,
- 4) that the proposed bike track from Cowes to Rhyll goes along the headland in and not through the park.

I valiantly fought for and lost twice 5-4 for the red bin to be picked up every week from Christmas to Australia day,

I moved the motion to make council take notice of the parking problems in Cowes.

I vigorously defended the community's right for public question time at council meetings.

If elected, in my next term my emphasis will be to get back to our core responsibilities. Rates, roads, rubbish plus recreation.

In light of the current economic times, we need to redo the council's 10-year plan. Councillors need to construct a four year Council plan that is achievable. I will move that we switch our federal and state advocacy from the Cowes Street master plan to the recreation reserve. Our community needs the aquatic centre and sporting facilities. We must get the sports precinct known as the "Carny site" rezoned now so when the money for the aquatic centre becomes available the site is shovel ready. Not in 10 years' time but now.

We urgently need a new footy/cricket ground, soccer park, basketball courts. As the saying goes, a healthy mind in a healthy body. Also, let's not forget our furry

friends, build a proper dog park.

I will move to freeze the waste levy. Our community is struggling with the cost-of-living crisis. Our less fortunate ratepayers are struggling to pay the current fee.

Have one free hard rubbish pick up each year. Not everybody owns a ute or a car with a trailer.

I will again move to have the red bin (land fill) picked up every week from Christmas to Australia Day. It will not create more waste, just pick up what is already in the red bin weekly, not fortnightly. Stop the decay in the heat of summer and stop the stench.

I will lobby both state and federal governments to implement meaningful erosion measures especially for Silverleaves. Sand re-nourishment is not working and retreat is not an option.

I will protect our foreshore environment and habitat from the proposed bike track from Cowes to Ventnor. Some may call the flora on the foreshore weeds, but I can assure you the fauna that lives there calls it home.

A vote for me is a vote for our Island.



**Tracey Bell**

I care about a community for everyone – inclusive for people of all ages and cultures where all can participate, be engaged, feel connected and cared for. I am running as a candidate because our growing community deserves better delivery of the basics. I value honesty, transparency and community, and stand for:

- > Building community: supporting families, new residents, and visitors to feel connected and cared for.
- > Youth engagement: creating opportunities for youth to participate, contribute, and thrive. I'm dedicated to creating safe spaces for our young people including:
  - Setting up a youth resource centre;
  - Establishing safe bike paths in built-up areas; and
  - Building the long-promised recreation reserve.
- > Sustainable development: balancing environmental responsibility with economic opportunity.

> Responsible tourism: protecting our natural and cultural heritage for the next generations.

We need a council that embraces change, responds to our needs, and prioritises our community's immediate concerns, especially when it comes to managing the influx of tourists at peak periods and how that impacts our community and our wildlife.

I deeply care about the kind of world we will leave for our children. My son and I are proud to call Millowl our home, where we live, work and learn together. We're actively involved in sports and other activities which fuel my passion for fostering a strong, vibrant community and achieving the best outcomes for our Island.

As the mother of a school-aged child, I understand the joys and challenges of family life. Working at Bass Coast Health gives me a deep appreciation for our community's diverse needs. In my professional life, I have gained valuable experience in government, healthcare, and tourism.

Prior to moving to Phillip Island, I was the director of OTA – Overland Travel Adventures, a tour company based in Kenya operating tailor-made tours throughout East Africa. I consistently advocated for responsible tourism and have a proven track record of

ensuring local communities reap the benefits of tourism in their area.

I've also worked as an Analyst with the Department of Defence in Canberra and studied a Masters degree in International Relations, a Bachelor of Arts (Politics) and a Bachelor of Business (Marketing).

Throughout my career, I have demonstrated leadership, community involvement, and accountability. I'm passionate about community development and taking action to improve the lives of those around me. If elected as an independent councillor, I promise to listen, be accountable, and work tirelessly to achieve the best results for our community.

I am honoured to step forward to serve the people of Phillip Island. Together, we can make our island an even better place to live.

I'm keen to hear issues and ideas from the community. You can find me at the market at St Philip's (corner of Thomson Avenue and Church Street) on September 28 and October 12 from 9.30am-12pm.

For more information about me and my campaign, please visit [www.facebook.com/traceybell4islandward](http://www.facebook.com/traceybell4islandward)

**Phone:** 0494 158 695.  
**Email:** Traceybell.islandward@gmail.com.  
**Website:** [www.traceybell.com.au](http://www.traceybell.com.au)



**Marnie Chadwick**

Growing up on Phillip Island has given me a deep understanding of the community's growth and ever-changing needs, which I now witness through the eyes of an adult. My diverse work background in administration, finance, event organisation, and environmental restoration has enhanced my adaptability and skillset. However, it is parenting my two neurodiverse tweens as a sole parent for the past 14 years that has truly shaped my perspective and priorities. The events my family has faced throughout this time has been challenging to say the least. Experiencing financial, physical, mental health struggles, as well as trauma, along with many highs and lows. We met these with resilience, leading to deep personal growth and invaluable life experiences. I am excited to broaden my understanding of council, motivated by my deep love, compassion,

and commitment to the Island community and environment.

#### Transparency and accountability:

Building a solid connection between the council and community is crucial for our region. The possibility of adapting a transparency hub, inspired by successful implementations in other forward-thinking councils, we have the opportunity to create an environment of openness and trust. Facilitating healthy in-person community meetings can serve as a crucial avenue for addressing local concerns, promoting discussions, and initiating collaborative efforts towards positive change.

#### Recreation reserve:

We are currently at a crucial point to move forward with the 80 acres of land, Hilton Chadwick Reserve, into an exciting hub of recreational activities and mental health facilities. Forty acres has already been rezoned from farm to recreation, our focus now shifts to the remaining forty acres awaiting rezoning, from farm to recreation. It is imperative that we act now ensuring a more foreseeable timeline and perpetuity for this generation and our future. The community can't wait another 20 years; a new timeline is vital.

#### History:

Bass Coast Shire is at a critical point, where the voices of its community members need to be heard and valued. It's time to prioritise the preservation and showcasing of our rich historical heritage by displaying historical items from the original Cultural Centre, at Berninneit. Honouring our past and exhibiting pride in the history of Phillip Island Shire and recognising the efforts of past council members is crucial for grasping our past and adapting to current situations.

#### Coastline

As an island, our coastline holds invaluable beauty and uniqueness. Sustaining a diverse ecosystem, habitat and wildlife must be protected at all costs. It is imperative that we remain firm in our commitment to preserving and protecting the delicate balance of our environment and development. Especially Silverleaves, at this present moment. Due to climate change and the foreshore, it is especially important the shire ensure sensitive, secure planning, commitment and sustainability for the future.

With a rich history that speaks volumes about the need to safeguard Phillip Island for its perpetuity, let's actively embrace this opportunity to work hand in hand, unite our voices, and together, build a more connected and vibrant community for all.



**Tim O'Brien**

Bass Coast Shire Council needs an injection of capable new blood and new ideas. As ratepayers, you know it. With increasing population pressure on services, roads, parking and our beautiful coastline, we need a responsive council who has the community at its centre, and acts on residents' concerns.

I am a resident, Gippslander born and bred, writer and editor. My wife and I previously owned the Phillip Island Winery, experiencing at first-hand the challenges of business here. You might have visited.

I'm not afraid to press an argument in any forum. If elected, my focus will be:

**1. New ovals/facilities** for Phillip Island Football Netball club. The land is there, the club has waited nearly 40 years for promised new facilities – they have waited long enough. It has a staggering 592 participants but just one oval for training and playing days for

its men's and women's football teams, for its Seniors and Reserves, U18s, U16s, six junior teams, U18 and U16 women's teams, veteran's team and more than 100 Auskick participants! We can fix this. It is not acceptable that proposed new ovals and facilities has stayed on a council back-burner for so long when the community need is so clearly evident.

**2. Coastal** erosion impacting on Silverleaves (and elsewhere) must be a priority of council. The Silverleaves community whose properties are under threat, deserve better. Council must keep DEECA and the State Government on the hook on this.

**3. Environmental** protection for Westernport Woodlands to address the disaster of sand mine expansions (sacrificed for sand for Melbourne).

**4. A general** rates cap, a fairer deal and better support for our farmers, and a rejection of inappropriate development. The proposed half-baked Bass Coast Unlocking Rural Tourism Strategy (BURT), which threatens the unique character of the Island with 'special use re-zoning' for large scale tourism ventures, must be opposed. It will destroy the very thing that makes Phillip Island so special.

**5. Designated** 'safe routes' – clearly marked along identified roads – for safer road sharing for e-scooters, e-tricycles, bicycles and mobility devices for elderly, school kids and community users.

**6. Pedestrian** walkways in built-up areas (so that families, kids and pooches need not walk on busy road shoulders).

My commitment: If elected, I will work for the benefit of Phillip Island, the Phillip Island community, and for the broader benefit of the Bass Coast region. I will work to ensure that council has the community at its centre, that it engage sincerely on matters that impact on the lives of residents in accordance with the highest principles of governance and accountability. That it deliver on its promises, and that it preserve and enhance the unique character of our region, of our beautiful coastlines, woodlands, farmlands and lifestyle.

See my Facebook page for more information (and please feel free to add your comments):

Facebook: Tim O'Brien Candidate for Bass Coast Shire Council – Island Ward  
**Website:** [www.TimO'Brien.vote](http://www.TimO'Brien.vote)  
**Mobile:** 0487 787 666  
**Email:** [tim@balladeer.com.au](mailto:tim@balladeer.com.au)



**David Rooks**

I'm seeking re-election as an independent candidate. I've lived on the Island for 24-years and with my wife raised our two daughters here. I continue to be active in volunteer leadership roles connecting me to local community.

Our community wishes to keep our island home a special place to live and visit.

As such I will continue to protect and enhance our natural environment, remain steadfast on maintaining our town boundaries from further residential development and push for a network of pedestrian and cycling paths across the Island. Next term is Phillip Island's time with the completion of the Cowes to Rhyll pathway and a feasibility study on Cowes to Ventnor in line with our Tracks and Trails strategy.

I'm proud, as part of last term's councillor group, we achieved record capital investment,

a 125 per cent increase from the previous term. Furthermore, we delivered our much-loved Berninnet Cultural Centre and supported the Phillip Island landscape with the Urban Forest Strategy to re-vegetate our townships. Other notable achievements include:

- Approval of the Isle of Wight development
- Opening of the Cowes Creative Arts Station Space

- Upgrades of Rhyll and Cowes boat ramps – Newhaven on its way

My current work role is Centre Manager at Phillip Island Community and Learning Centre (PICAL). It is a richly rewarding role, working alongside 80 active volunteers serving the needs of our community. Previous to this, I have held roles in event management/tourism, human resources and primary school teaching. These work roles are complemented with higher education studies with a degree or post graduate degree in each sector.

I have a strong connection with the community of Phillip Island and its environment. While my daughters were growing up, I became involved in their community as Chair of Phillip Island Kindergarten, School Council committee and Chair of Scouts. Thereafter,

my interests followed with years spent with Phillip Island Tennis Club committee and currently Phillip Island Landcare (chair and committee). Two years ago, I initiated a new group called Phillip Island Land Alliance. This group, which I chair, has representation from the nine coast care groups on our Island, Landcare and the Conservation Society. It's an important alliance representing community groups who care for the land on Phillip Island and surrounds. The time spent with my local community is very rewarding.

Early in my term of Council, I undertook and passed the Australian Institute of Company Directors (AICD) course. This meaningful and relevant course further developed my skills and understanding of the councillor role.

I care for community and I'm enthusiastic to continue providing experienced and strategic leadership as an Island Ward councillor for the betterment of all.

I seek your vote at the Council Elections October 2024.

Feel free to contact me:

**Email:** [david@eventsupport.com.au](mailto:david@eventsupport.com.au),  
**Website:** [david-rooks.webnode.com/](http://david-rooks.webnode.com/)  
**Phone:** 0418 115 935.



**Darrell Silva**

My name is Darrell Silva and I believe in commonsense facts and data decision making for the benefit of Phillip Island.

I live in Cowes and am an active sailing member of the Cowes Yacht Club and member of the Phillip Island RSL. Now retired, I have been successful in international consulting and project collaboration, with a background in Science and a Master of Applied Finance.

I believe in "back to basics" for council; transparent decision making, accountability for actions and community consultation accessible for all. These beliefs are especially important when dealing with ratepayer's funds.

Council is spending your money, not theirs.

By listening directly to ratepayers, I will understand community needs and be enabled to take appropriate action at council, using facts and data, not ideology. I will lobby for review of multi-year council plans and programs to address the priorities of the Phillip Island community and visitors. Examples of long-term unmet needs on Phillip Island are improvement and expansion of sporting facilities, strategy for preserving the northern shore-

line, specific Cowes parking strategy, and holiday waste (red bin) management. I support tracks and trails, but not at the expense of foreshore vegetation. I support green energy initiatives, where commercially viable.

My experience in finance and negotiating with government officials and corporations will be a valuable asset for ratepayers and council and will enable me to work effectively with council officers, councillors and lobbying government as appropriate.

A vote for me is a vote for commonsense, consultative and transparent decision making to benefit our island.

**Authorised by Darrell Silva, P.O. Box 996, Cowes 3922**



**John Trigt**

If I am elected to council, I will endeavour to work with my fellow ward councillors as well as all other Bass Coast councillors to support me in the following.

1. Oppose any further reduction of car parking on Phillip Island.
2. I will only support State Government rate cap rises, strongly opposing any other council additional rate rises requests.
3. Improve our community engagement process on all platforms.
4. To introduce a once-a-year opportunity to dispose hard rubbish free of charge at a council waste facility.
5. Continue the freeze on current township boundaries.
6. Stop any push to re-

zone sensitive coastal areas for large scale tourism developments. Rescind the motion to allow this happening (BURT).

7. Take back control of council, by way of more openness and transparency; move a motion to introduce a Transparency Hub.
8. Continue with the extra red bin waste collection over the Christmas period.
9. Rescind the motion of the Cowes Streetscape. In other words, leave Thompson Avenue a two-way street and keep the parking as is.

Then use that money to rezone the Carnival Land and make a start to the recreation master plan. Starting the building of the long-awaited aquatic centre, while starting the new football/sporting complex. We have been told our Phillip Island Football Netball Club is the biggest in Gippsland. However, its facilities are too small and inadequate. The Aquatic Centre will complement both the sporting commu-

nity while improving the health and well-being of our residents and tourists alike. We need to remember Phillip Island is one of the major tourist locations in Australia, let's make it better.

10. I will have regular monthly meetings for the ratepayers at a council facility potentially, Cowes' Berninnet centre.

Note: I will endeavour to represent all ratepayers and residents of the Island ward. I believe we should all work in council for the combined benefit of all ratepayers or residents of the Bass Coast Shire.

Working with my fellow ward councillors and other councillors we will achieve the best outcome for the Island Ward as well as the entire Bass Coast community.

Vote 1 John Trigt Island Ward

"We Deserve Better and Together We Can Do Better"

**Email:** [johntrigt4phillipisland@gmail.com](mailto:johntrigt4phillipisland@gmail.com)  
**Mobile:** 0479 071 175.



**Brian O'Farrell**

For too long, Bass Coast Shire residents and ratepayers have not received the representation they deserve. Dissatisfaction is widespread at high rate bills for the standard of services received and many examples of wasteful and indulgent spending. I have observed council's decisions often invite controversy and its spending priorities seem to be out of step with the community and especially in Western Port ward – we deserve better.

Councillors should be strong advocates for their wards. Decisions should be evidence based and public after critical assessment of the facts, addressing stakeholder needs, consideration of sustainability and balancing immediate and future needs. But too often councils have been stacked with aspiring politicians and well-meaning single-issue activists pursuing their hobby horse du jour. Council is more complex than a single issue and not the place for party ideology or as a stepping stone to a career in state

politics.

Indeed this is why I decided to run as an independent candidate for council.

Councils are not your typical business – Bass Coast manages over \$1 billion in assets, and this year will spend \$80 million delivering around 100 different services and \$24 million in capital works. It supports farming, tourism and service sectors spread over 865 square kilometres.

Accordingly, council's significant budget demands rigorous financial oversight to ensure it is spent wisely. As a retired CPA and consultant, with senior experience in local government, I am uniquely qualified to provide this oversight.

Council must become more effective at delivering the core services that affect liveability and amenity of our communities – roads, footpaths, connected trails, disabled access, rubbish and recreation facilities.

A vote for incumbents is a vote for more of the same. It need not be this way. If you want change, then vote for change – vote for candidates committed to sustainability and balancing the community's immediate and future interests, and then hold them accountable.

Historically, lack of transparency and distrust between council and the community has led to disillusionment and disinterest despite

council's best efforts at deliberative engagement as required by law. I would like to improve the conversation between council and the community by introducing community panels to generate common sense outcomes to complex values-based problems.

Bass Coast is not immune from the consequences of climate change. Council must act to increase resilience in areas at risk from fire, flood and rising sea-levels by embracing a more sensitive and pragmatic approach to development – respecting town and hamlet boundaries are a given, as is preservation of native forests such as the Western Port Woodlands and maintaining wildlife corridors. Urgent work is required to address erosion concerns in active coastal zones and prevent further deterioration of Western Port Bay.

I am Secretary of the Corinella Residents and Ratepayers Association and a member of the Grantville Cemetery Trust. I currently volunteer technology support through the Corinella and District Community Centre.

Please give careful thought to your vote. Together, we can ensure Western Port receives the attention and resources it deserves.

**Facebook:** BrianOFarrell4WesternPort  
**email:** brianofarrell4westernport@gmail.com



**Glenda Minty**

My main aims as councillor are for sensible, timely planning decisions, openness and transparency of governance, sensible spending and improving community connections so Bass Coast continues to be an enviable place to live.

Planning, which is my passion, needs urgent attention. Lack of responsible planning can lead to unfortunate, expensive consequences.

As a retired farmer, I empathise with the frustrations and wariness of Bass Coast farmers with the Bass Coast Unlocking Rural Tourism Strategy which aims to turn "unproductive" farms into tourist venues and luxury resorts.

Though some farms on the coast may not be as productive as larger inland farms, they are vital to the very charm that brings tourists to Bass Coast. The continuing viability of farming everywhere in Bass Coast is crucial to tourism, even though "expert

consultants" may falsely consider some to lack productivity or be too small to be viable.

Tourists don't just come see the penguins; they want a whole rural and coastal experience, including the coastal villages and hinterland locations.

Forget condominiums, we need sensitive tourism development, not only on the coast but also near the rail trails, the Western Port Woodlands and other nature based walks, with events and experiences in and around the small towns and rural localities.

Bass Coast is known worldwide for our many unique nature experiences, so don't kill any of the geese who lay the tourism golden eggs, and that includes our farms and small towns.

We also need tighter controls over extractive industries. The State Government's proposed super quarry in Leongatha South's prime dairy country and continued expansion of sand quarrying into Western Port Woodlands can only be detrimental to Bass Coast. The council must ensure that such projects do not develop due only to vested interests. There are more suitable sites that will not impact on our fragile and unique coastal region. Bass Coast has a high international envi-

ronmental heritage value. It is in grave danger of becoming a quarry and giant landfill site for Greater Melbourne.

Hard decisions must be taken to deal sensibly with coastal erosion. Long term planning must take into account the full ramifications of remedial measures, not just respond in a knee jerk fashion to vocal lobby groups. The State Government's Cape to Cape Resilience Project states a combination of soft (restoration/vegetation of coastal habitats to reduce erosion risk) and hard engineering solutions (seawalls, groynes, breakwaters, flood barriers) will be needed along with staged retreat in some locations. There is no point attempting to save desirable coastal locations by making them virtually unlivable.

If elected I intend to use the skills I have gained as a science teacher-librarian, farmer, rural resident, owner builder, B&B host, licensee, youth mentor, volunteer, CWA office bearer, and Board Director of community organisations, and local knowledge for the benefit of the Bass Coast.

I am not affiliated with any political party or lobby.

Vote 1 Glenda Minty.  
Authorized by G Minty, POBox 60, Wonthaggi.



**Rochelle Halstead**

### Balance is key

Local Government is a big beast with highly regulated practices enforced by State Government legislation. It takes time to understand plans, policies and strategies that drive outcomes. I am grateful for the support of Western Port Ward residents who allowed me to serve as their representative from 2020. My experience as a former councillor and mayor made my election to Bass Coast Shire less daunting and I was delighted to have been elected as Deputy Mayor in 2022 serving two years in this role to 2024.

My first term has been spent advocating for the San Remo Township Structure Plan, the Neighbourhood Character Study, Housing Strategy, Partnership Policy and Crown Land Policy, all of which have now been adopted by council. As Chair of the Mountain Bike/BMX/PUMP Reference Group I worked with committed

community members which has provided a strategy that will help to progress these facilities in Bass Coast. As Chair of the community Arts Committee, I have enjoyed seeing first-hand the creative talent of artists in Bass Coast and I am committed to encouraging community, to not only involve themselves but to appreciate the great benefits the arts bring. As a graduate from the Australian Institute of Company Directors my governance experience is strengthened and has provided me with the confidence to actively address anomalies in our governance policies that will result in better outcomes for our community.

As Western Port Ward holds significant agricultural land in Bass Coast, I am grateful for growing up with farms in my family – both dairy and beef, and for my involvement in the Bass Coast Rural Engagement Group which has helped guide me in representing our farmers.

Our waterline doesn't ask for much, just the basics and I will continue to push for their needs!

As a small business owner, I support local businesses and our tourism industry which are not only critical to our economy but incredibly valued by community.

I hope the newly elect-

ed council return to core responsibilities of local government, investing in current infrastructure, addressing the shortage of sport and recreation facilities, amending the current restrictive governance policies and reporting mechanisms to allow for greater transparency and returning a sense of civic pride.

Advocacy to both state and federal governments is key to seeking outcomes on the ground as local government cripples under rate capping and cost shifting. There is no way council can deliver on its own the necessary projects and environmental protection measures across the shire that Bass Coast requires, so advocacy will be critical.

Continued commitment to considering environmental impacts with every decision and balancing our investment in this area with other pressing needs for our community is vital for community health and wellbeing.

It has been a privilege and an honour to have the opportunity to meet so many community members doing their bit, and I ask for the support of Western Port residents to continue as there is so much more to do.

Find out more about me at @rochellehalsteadforwesternport  
halsteadrochelle08@gmail.com



**Jon Temby**

Jon Temby is standing for the Bass Coast Shire Council in the Western Port Ward.

Jon is a committed environmentalist with a background in the corporate world. He has a long family association with Phillip Island and in 2021 came to live in West Creek on a property with a Trust for Nature covenant protecting its bushland.

Jon brings practical experience from farming, the arts, emergency services, Landcare and other community service organisations, teaching, risk management in multinational organisations and running his own OHS consultancy.

Jon would advocate for:  
• Protecting and enhancing Bass Coast's natural environment,

beginning with the Western Port Woodlands;

- Supporting arts and cultural opportunities as part of a strong local economy;
- Supporting the uptake of renewable energy as part of the shire's climate action plan;
- Increasing community connectedness, local transport options and access to health services in the smaller townships of the Western Port Ward;
- Increasing public open space in the shire's new estates for passive uses such as off-lead dogs, kite flying, walking, group chatting, reading etc. These spaces need to be safe, shaded and within walking distance of local housing.

Jon believes councils have been squeezed financially at the same time as they have been required to take on more duties. He said he would advocate for increased state and federal funding to enable our council to provide essential infrastructure and services.

Jon wants to hear from residents of the Western Port Ward about their issues for council attention.

Please contact him on 0439 441 264 or jontembyforbasscoast@gmail.com



**Nikole Schellekens**

As a farmer, small business owner and mother of two young children, my passion for rural communities runs deep. My 20-year career in Social Work and Mental Health, along with a Master's degree and research focused on the Mental Health of Australian Farmers, has reinforced this dedication. My experience as President of San Remo Pre School, co-founder of the Bass Playgroup and past volunteer work with business associations and emergency services has further fuelled my commitment to serving our community.

The Bass Coast is a truly special place with its stunning natural beauty, strong sense of community, and vibrant local culture. I love living here and am passionate about preserving and enhancing what makes it great, which is why I'm running for council – to help make our community even better for everyone. My campaign focuses on several key priorities:

### Engaging community

I am committed to serving and representing our community in the Western Port ward, ensuring that our unique needs are heard and addressed. It is vital that council actively consults and engages with our residents on decisions, projects, and plans that affect our daily lives and future. Throughout my campaign, I will emphasise the importance of fostering a council that listens attentively to the voices of our community and takes decisive action to address their needs.

### Expanding services

Our rapidly growing ward requires enhanced infrastructure and resources to meet the needs of our residents. This includes improving access to essential services such as GPs, psychologists, libraries, and community groups. I will advocate for the development of these facilities to support our community's well-being and growth. Additionally, I am dedicated to supporting local businesses and promoting our vibrant tourism sector, which are crucial elements of our economy. Improving transport options within our ward will also be a priority to ensure convenient and efficient mobility for all residents.

### Supporting our land

I am passionate about

supporting those who farm, utilise, and care for our land, recognising them as integral to the fabric of our municipality. Farmers play a vital role in our economy, and their contributions are significant, though their voices have traditionally not been heard. I will actively engage with farmers and those who use our land to understand their needs and challenges, advocating for policies that promote sustainable agriculture and environmental stewardship. Protecting our natural environment is paramount, and I am committed to taking decisive action to preserve our waterways, bay, and land resources for future generations.

The Bass Coast Shire has shown remarkable resilience through challenges like Covid, storms, droughts, and floods. Our achievements in education, agriculture, and business, combined with our community hubs, are sources of pride. My goal is to build on these strengths to further enhance our region.

This October, I am asking for your vote in the Bass Coast Shire Council elections. With my experience, passion, and dedication, I am eager to work together with you to strengthen and support our community, ensuring a vibrant and inclusive future for all.

nikole.basscoast@gmail.com

council can shine a light and guide the way. Pods or portable units should be encouraged to be built in suitable backyards. Not only will the homeowner get a boost to their budget, but it will also give a homeless or struggling person a cheap and safe option to have a roof over their head.

Roads are a major concern right throughout our shire including highways, arterial roads, and local roads where potholes are a common occurrence. I will advocate we allocate monies to upgrade and repair roads, culverts, drains, and bridges.

Residential footpaths play a vital role in communities. The humble footpath provides links to shopping, community centres and to our magnificent shoreline. There are many local residential walkways throughout Western Port that need to be made or footpaths maintained.

Proper hard rubbish collection is critical for maintaining environmental health and public safety. Incorrect disposal can lead to pollution, risk of injury and unwanted clutter. We are currently charged \$132 per collection. I will be advocating for all rate-payers to have one free hard rubbish collection.

Farming is a high pressure and 24/7 occupation.

In Western Port we have a diverse number of farming enterprises, and it is vital we support them. Farmers work hard with Landcare and other farming groups to adapt and improve their carbon footprint. The Farming Rating System is up for review. I will ensure it is manageable and equitable.

Tourism plays a significant role in our shire. We have a vibrant business community and many popular tourist attractions. It provides employment and is the backbone for small businesses. We should support and continue to develop strategies to maintain our tourism industry and small businesses.

Coastal erosion is a major concern along our Waterline and on Phillip Island. Action needs to be taken urgently. Weeds are out of control. Further programs and funding are needed to contain the spread into our woodlands, parks and along the shoreline. I will advocate for a strategic management plan for Westernport and surrounding region.

I seek the opportunity to represent you on council and will work diligently to make Western Port a wonderful place to live. Contact me at jan.thompson3984@hotmail.com, PO Box 2057 Corinella 3984. Phone: 0408 343 456.



## Community grills candidates

### ELECTION

Here is a snapshot of some of the questions asked by the audience at the 'meet the candidates' event last week.

About 120 voters attended the Island Voice event at the Phillip Island RSL, with questions varying from town boundaries to support for youth.

**Q:** How can council deal with over population of the island, residents and visitors, especially the impact on infrastructure such as roads?

**Marnie:** A lot of work needs to be done by council.

**John:** Council needs to have a good look at it.

**Darrell:** There will be increasing pressure on housing density if you want to retain rural land. I don't have a clear answer.

**Tim:** Everyone knows Phillip Island is a cul-de-sac. Traffic builds up from San Remo to Bass. Solutions aired include widening the bridge and the roads but that will just bring the same traffic jam to the island. We have to think creatively.

**Ron:** Town boundaries are critical to keep. If we lock them in, there's only one way to go and that's up.

**David:** It's definitely a concern. We have been trying to push visitors to the off-peak period and spread the load. Town boundaries are critical. We have created the neighbourhood character strategy and housing strategy which nominates places like Ventnor as minimal change, whereas Cowes is incremental or substantial change.

**Tracey:** There needs to be alternative transport options and reduce reliance on cars. More development requires more services. We want more services but there's got to be a balance between what we want and the fact we are at the end of the road.

**Q:** New candidates, what is your attitude to hamlet boundaries?

**Tim:** I'm absolutely, implacably supportive of hamlet boundaries. The fact there are continuous buildings through to Ventnor is indicative of past failures. We need to retain natural corridors to preserve the unique lifestyle here.

**Tracey:** I absolutely support locking in town boundaries. We need to preserve the environment and keep areas sacred otherwise we lose the reason tourists come here and the whole sense of why we live here.

**Darrell:** Keeping town boundaries will put pressure on increasing density. Those two need to be balanced.

**John:** I support keeping town boundaries. I don't want to live in Melbourne.

**Marnie:** I support keeping town boundaries as they are..

**Q:** Given there are six councillors representing two other wards in Bass Coast, what is your vision and ideas to create a team environment (to get colleagues on board Island Ward issues)?

**Tracey:** I'm quite good at developing a rapport with people and have experience in achieving outcomes.

**David:** If councillors as a group get on, they will achieve more. So you focus on commonalities.

**Ron:** Nearly every time I moved a motion,

the other two Island Ward councillors voted against me. How many times did we lose five to four in a vote that was detrimental to the island.

**Tim:** It's a matter of doing research. Those other councillors share a common interest in Bass Coast.

**Darrell:** Life has taught me most things are a negotiation requiring preparation, understanding and knowing when to trade.

**John:** (Emphasising) that what we're trying to achieve for the island needs to be done.

**Marnie:** I think the three Island Ward councillors should meet regularly to work as a team.

**Q:** Under Bass Coast Unlocking Rural Tourism strategy (BURT) farms will be open slather for tourism developments. How will you deal with this?

**Tracey:** There are limits to development. Farmers still own their land.

**David:** BURT is the first piece of work. There are plenty of pieces yet to come.

**Ron:** We don't need BURT.

**Tim:** I don't believe we should prioritise tourism over farm use. The rates differential and increase in property values makes it hard for farmers. Development should be small-scale, not high end.

**Darrell:** I'll take it on notice. Development of farm land needs to be in line with the sensitivity of the environment.

**John:** I'm not able to comment as I'm not familiar with it.

**Marnie:** It sounds to me something I'd not like.

**Q:** What do you propose to help youth develop their lives and as a means to developing the whole island?

**Marnie:** Supportive of a club house.

**John:** Supportive of a youth club.

**Darrell:** Development of the sports hub will build camaraderie, sportsmanship, teamwork (sic) and fair play.

**Tim:** There needs to be more open space designed into developments. Where can kids get off their screens and kick the footy without asking to be driven?

**Ron:** I advocated for the new secondary school at San Remo and now we need years 10/11/12 VCAL.

**David:** I am working to get youth programs at PICAL.

**Tracey:** There needs to be a youth resource centre.

**Q:** Council seems more obsessed with green ideology than practical solutions for the island. Discuss.

**David:** I think Phillip Island is a special, beautiful place that should not only be retained, but enhanced.

**Ron:** The environment is important (but) climate change, renewables, First Nations issues should not be prioritised to the detriment of the majority.

**Tim:** I'm a committed environmentalist. If there's a problem, you fix it. It's a matter of getting the balance right.

**Darrell:** There's a lot of decisions based on ideology. We need to look at facts and data.

**Marnie:** I'm open to taking on board community issues but also protecting the environment.

# Crime novelist sets up new writing group

## COMMUNITY

As a crime novel writer, Cowes' author Sandi Wallace knows all about the blood, sweat and tears involved in writing.

Her books, which include thrillers about country cop John Franklin, all require speaking with experts, tours of police stations and immersing herself in the seedy underbelly of a community, let alone the skill of writing a page-turner.

Sandi, who moved to Phillip Island this year after holidaying here, has just established a free writing group in Cowes, called Island Silent Writers, which meets once a month: every second Wednesday between 10am and midday at the library in Berninnet.

"I'm good at discipline, working every day on my own, but some people struggle with commitment," Sandi said.

"So meeting once a month to work on a project is a way of creating a writing habit."

Sandi said she had seen similar ideas for writing groups around the world and thought it would be a "good way to connect with other writers" in the community.

She said the first part of the group meeting was about support, sharing and bouncing ideas, "not critiquing", with the second half focused on quietly working on individual projects.

"It doesn't matter what you are writing. There's no sharing or critiquing required."

"People don't even need to be looking for publication, but be driven to write, so we'll potentially get a good mix of writers at all levels."

"It's not about instruction, but quietly working away on our own pieces, so there's no pressure."



Cowes' author Sandi Wallace, who has published a series of crime novels, has started a new writing group, Island Silent Writers.

the library's inaugural author panel and morning tea.

The event is free, but as there are limited spaces available, please book your spot by phoning the library on 5672 1875 or online via [eventbrite.com.au](http://eventbrite.com.au).

[sandiwallace.com/](http://sandiwallace.com/)



Maintenance work on some of Rhyll Coastcare's previous plantings, west of Lady Nelson Point.

# Working bee success

## ENVIRONMENT

Rhyll Coastcare hosted a successful planting working bee on September 8.

The working bee was part of the Phillip Island Threatened Species Habitat Day and attracted a dozen volunteers.

The day was supported by Bass Coast Shire Council, with council officer Dave Martin delivering the plants and tools and

Environment Programs Coordinator Peter Maganov helping with planting.

The team planted over 100 plants at the Rhyll Inlet entrance to the northern foreshore and west of Lady Nelson Point. Other maintenance work was also undertaken, followed by morning tea.

The next working bee is on Monday October 14, from 9.30am until 11.30am to finish the planting. It

will also include weeding and maintenance on the northern foreshore opposite the end of Rhyll Court.

The Rhyll Coastcare group is holding its AGM at the Rhyll Hall on Saturday November 9 from 10am - 11am. There are a number of committee positions that need to be filled.

All welcome. Please bring along any interested neighbours.

## Crime

Sandi said around the age of six her "life-long addiction" to crime fiction set in, thanks to her favourite children's mystery and adventure story authors.

She worked in various careers including banker, paralegal, journalist and nearly joined Victoria Police and this year, after moving to Cowes with her husband, for the first time is working full time on writing.

"You can't treat it as a hobby if you want to do it seriously. It's got to be a job, a profession."

Her debut novel Tell Me Why was released in 2014 and the following year won the Davitt Award Readers' Choice. It was the first instalment in a series starring city journalist Georgie Harvey and country cop John Franklin.

Her books are less whodunnit and more about the psychology of crime, "the why and how it impacts people".

While Phillip Island was proving to be a muse, Sandi said she had no plans to write a crime novel set here.

"Being in a small community you've got to be careful about how you portray it. There's only so much creative licence you can take and you don't want people to think you are writing about them."

"But I'm definitely influenced by the coastal environment. We love to fish, walk and canoe. And it feels like a community here."

Sandi will be appearing at Wonthaggi Library on Saturday October 5 at 11am along with nine other local writers for

J00277AA

## SPRING ART CLASSES

**Tuesday and Wednesday.**  
**Morning and afternoon classes.**

**Starting Sept 23 - Dec 4.**  
**Call Jan, 0437 878 174**  
**to book your place or for more info.**

*Anchorage Art Studio*  
Welcome to my atelier! this is where I make my art!

J00276AA

## WIN AN E-BIKE!

**In conjunction with Express Roller, we have a choice of three e-bikes to give away.**

**Buy any Express product in-store to go into the draw.**

**Haymes PAINT SHOP**

215 Settlement Road, Cowes | Ph: 03 5952 2522  
Cowes@haymespaintshop.com.au | haymespaintshop.com.au

J00276AA

## PHILLIP ISLAND GALLERY

We are so excited to announce that we are opening Thursday 26th September 11am - 3pm.

We have a new forever home at the old CFA building, 119 Settlement Road Cowes (Next to the SES).

Open Thursday - Sunday 11am - 3pm.

NY1690CJ

## GIG GUIDE

28/09 **OLLY & SCUZZI - 9PM**  
29/09 **820 DOOR JAMS - 5PM**

06/10 **GEOFF ACHISON - 5PM**  
12/10 **FLUX 15. FT HANDSDOWN & LEIGHBOY**  
**EARLY BIRD \$17+BF**  
02/11 **INXS TRIBUTE SHOW - 9PM \$39+BF**  
15/11 **THE SMITH STREET BAND - 9PM \$50 +BF**

PLUS:

**WEDNESDAY NIGHT**  
**PARMA NIGHT**

**THURSDAY NIGHT**  
**BURGER NIGHT**

**FRIDAY NIGHT**  
**LOCALS NIGHT MEAT RAFFLE**  
**HAPPY HOUR 3-5PM**

**SUNDAY NIGHT**  
**SUNDAY ROAST**

**MONDAY - SATURDAY**  
**\$20 EXPRESS LUNCH**

**WWW.THEWESTERNPORT.COM.AU**

# Woolamai Surf Club Open Day

## THE BLOCK

Woolamai Beach Surf Life Saving Club is the latest local group to feature on The Block.

Last week, the contestants' community challenge was to give the clubhouse a makeover.

Now Woolamai Beach Surf Life Saving Club (WBSLSC) is opening its doors, post Block, to give the community a chance to see the changes for themselves.

Club President, Jason Close said they were thrilled to host the reality TV show team.

"Each season, The Block likes to give back something to the local community, and we were rapt that they chose our Club to help out, through their community challenge.

"Our club is a voluntary organisation that has been serving the community of Phillip Island and Bass Coast for the last 65 years. Our clubhouse is our rescue base and home away from home for many of our volunteer lifesavers.

"It's now over 20 years old and has experienced a lot of wear and tear and harsh coastal conditions. What The Block has been able to do in just one week has been remarkable."

## Appreciation

Club Vice President, Fi Blackmore said the open day on September 27 was a way of showing the club's appreciation for the years of support from the community.

"We have greatly appreciated our community's support over



Club President Jason Close (left) with the team from The Block, where the community challenge was to give the clubhouse a makeover. The community can see the results for themselves at a community open day on September 27.

many years. For this reason, we will be hosting a community open day on Friday September 27 between 2pm and 5pm at the clubhouse.

"We would love it if members of the community could visit and have a look around an operational surf lifesaving club, and of course take a look at some of the great work The Block has carried out."

During the afternoon Club members will hold clubhouse tours, answer questions about surf lifesaving, Nippers program and some of the special events, training courses and programs that the club runs.

"We are always looking for new members and there are also many ways that people can make a difference in a surf lifesaving club, even if they can't

patrol the beach," said Fi.

Admission to the community open day is free, and gold coin donations are always welcome.

WBSLSC is also raising funds for urgent repairs and an upgrade to the Smiths Beach Rescue Base. Electronic donations can be made on the day and via the club's webpage ([www.woolamaibeach.org.au/donate](http://www.woolamaibeach.org.au/donate)).

Details of a special fundrais-

ing evening event at the clubhouse to be held in October will be shared soon.

"The Block has been great at promoting Phillip Island, its businesses and attractions," said Jason.

"We are expecting to see many more visitors at our beaches this summer and I am sure many will be more aware of our club as a result.

"We hope that this translates to more visitors swimming between the flags. The show has a national audience and airs in many overseas countries and so we hope that our involvement in the show highlights the important role that lifesavers play in the community and that beaches with lifesavers are safer places to swim."

Everyone in the community is welcome to visit the club during the open day.

"Our patrolling members give up so much of their time to help keep the community safe," said Fi.

"The Block has helped give our clubhouse a real lift and make it a more comfortable environment to spend time in. We are looking forward to seeing you there on Grand Final Eve."

Woolamai Beach Surf Life Saving Club Community Open Day Friday September 27, 2pm - 5pm

Woolamai Beach Surf Life Saving Club, Woolamai Beach Road, Cape Woolamai

Admission is free. Gold coin and other donations welcome.

[www.woolamaibeach.org.au](http://www.woolamaibeach.org.au)

**TURN THE PAGE**  
BOOKSHOP PHILLIP ISLAND  
This event is supported by Turn The Page Bookshop. Jock's book 'Cherrywood' is available at Turn The Page and for purchase at the event.

**JOCK SERONG**  
**LITERARY LUNCHEON**

Please join us for a Literary Luncheon event with multi award winning author Jock Serong, discussing his new release *Cherrywood*; and also reminiscing on learning to surf in his early years on Phillip Island.

Ticket includes a drink on arrival, a delicious luncheon, and a memorable afternoon with this acclaimed writer and speaker in the beautiful setting of the Phillip Island Winery.

FRIDAY 25TH OCTOBER, 12.30 PM  
PHILLIP ISLAND WINERY  
414 Berrys Beach Ventnor Phillip Island

TICKETS \$50: THROUGH TRYBOOKING  
[www.trybooking.com/CVCSE](http://www.trybooking.com/CVCSE)



Organisers: A Book Club on Phillip Island.  
Anne 0409 216 033 Sue 0417 651 588 Jill 0419 556 266

**ABOUT JOCK SERONG:** Highly acclaimed author of many genre defying books including *Quota* (winner of the 2015 Ned Kelly award for best first fiction) *The Rules of Backyard Cricket* (shortlisted for 2017 Premier's award for fiction and finalist in the 2017 Indie Book Awards Adult Mystery Book of the Year) *On the Java Ridge* (winner of the inaugural UK Staunch Prize) and the widely praised trilogy of historical novels *Preservation*, *The Burning Island* and *The Settlement* set in and around the Furneaux Islands in Bass Strait and south-east Australia. Editor of Great Ocean Quarterly and feature stories writer across Australia's surfing media. Jock also enjoys a strong association with Phillip Island, where he first learned to surf at Berry's Beach.

**An evening with Sandy Mackinnon**  
Author of *The Unlikely Voyage of Jack de Crow*

6:00pm Thursday  
October 3rd  
at the  
**Newhaven Yacht Club**  
**\$1750**  
(Includes a large selection of delicious finger food)  
**\$10.00**  
for NYS members

An entertaining evening of stories of his adventures along the waterways of Great Britain, crossing the English Channel and then navigating the rivers and canals of Europe .....in a bright yellow Mirror dinghy!..

Proudly presented by  
**Rotary**  
Phillip Island & San Remo

**Book at <https://www.trybooking.com/CVHFV>**

**OFF**  
GRID | LINE | ROAD  
#GETOFFONPHILLIPISLAND

**NATURALISTE TOURS**

Get OFF GRID, take yourself OFF LINE & venture OFF ROAD. Discover this unique, unspoilt, remote destination.... French Island. [naturalistetours.com.au](http://naturalistetours.com.au) or call 03 5257 4570

*Sweet n Sassy*  
SMOOTHIES, LOADED SHAKES, ICE CREAM & MORE

CREATE YOUR OWN LOADED SHAKES

Shop 1/4 The Esplanade, Cowes, Phillip Island  
[www.sweetnassy.com.au](http://www.sweetnassy.com.au) (03) 5956 9204

Be an island **WONDERER**

Set sail and wonder  
WESTERN PORT FERRIES

[www.westernportferries.com.au](http://www.westernportferries.com.au)

**Cape Cruise**  
Spectacular scenery

Wildlifecoast CRUISES  
[WWW.WILDLIFECOASTCRUISES.COM.AU](http://WWW.WILDLIFECOASTCRUISES.COM.AU) CALL 1300 763 739

**Phillip Island Seal Cruise**  
Playful wildlife

**NEW**

**SUPER NAIL CARE & SPA**  
Professional Nails Care For Men & Ladies

0405 536 888  
134 Thompson Ave. (opp Woolworths)  
Ben and Rach Le and staff will still be operating at 55 Thompson Ave.

**GRUMPY'S CRAZY GOLF**

OPEN 7 DAYS

**OPEN HOURS:**  
9am till 5pm - 7 days a week  
152 Thompson Avenue, Cowes.  
5952 3060 | 0408 120 908  
No weather problems - Crazy Golf is under cover!

**DAILY SURF LESSONS**  
DURING THE SCHOOL HOLIDAYS

\$75 - 2 hour lesson - everything provided  
225 Smiths Beach Rd, Smiths Beach  
**BOOK NOW Ph: 5952 3443**

**Island Manor**  
[WWW.ISLANDMANOR.COM.AU](http://WWW.ISLANDMANOR.COM.AU)

Sleeps 12,  
4 spacious bedrooms,  
2 bathrooms - over 3 levels.

**i** island  
GUIDE

**WESTERN PORT BAY**

**BASS STRAIT**

**VENTNOR RD**, **PHILLIP ISLAND RD**, **BACK BEACH RD**, **PHILLIP RD**, **ISLAND RD**

**VENTNOR**, **COWES**, **SilverLeaves**, **Rhyl**, **Wimbledon Heights**, **Smith Beach**, **Sunderland Bay**, **Churchill Island**, **Newhaven**, **San Remo**, **Cape Woolamai**

**CONSERVATION HILL RESERVE**, **RHYLL WETLAND & BIRD SANCTUARY**, **OSWIN ROBERTS RESERVE**, **KOALA CONSERVATION RESERVE**, **PHILLIP ISLAND NATIONAL SURFING RESERVE**, **CAPE WOOLAMAI STATE FAUNA RESERVE**

**GRAND PRIX CIRCUIT**, **Sunset Strip**, **Surf Beach**, **Surfies Point**, **Woolamai Surf Beach**

**THE NOBBIES CENTER**, **PENGUIN PARADE**, **Seal Rock**, **Black Rock**, **FUR SEALS**, **WHALE MIGRATION**, **SHEARWATERS**, **EASTERN BARRED BANDICOOT**, **PELICAN FEEDING**

**clip n Climb**

The Ultimate School Holiday Fun  
[islandclipnclimb.com.au](http://islandclipnclimb.com.au)

**Phillip Island TENPIN BOWLING & Entertainment Centre**

5952 3977  
OPEN 7 DAYS

**silverwaters VINEYARD**

Cellar door open  
Thursday-Monday 12-5  
during school holidays

**FISH & CHIPS**  
WITH OCEAN VIEW  
FRESH LOCAL SEAFOOD FROM OUR FLEET

**SAN REMO CO-OP FISHERMANS**  
1948 EST.  
OPEN 7 DAYS 10:30AM TO 7:00PM

**Phillip Island is springing to life**

Welcome new life on the island at the **Penguin Parade**, **Koala Conservation Reserve** and all the farm excitement on **Churchill Island**.

SAVE with a 3 Parks Pass

BOOK NOW [penguins.org.au](http://penguins.org.au) 03 5951 2830  
Phillip Island NATURE PARKS

**National Vietnam Veterans Museum and Café**

FASCINATING FOR ALL AGES

- Holographic light & sound show.
- Audio visual interactive devices.
- Aircraft, helicopters & Centurion Tank.
- Nui Dat Café for coffee and snacks.

Open 7 days from 10am - 4pm - Ph: 5956 6400  
25 Veterans Drive, Newhaven, Phillip Island  
[vietnamvetsmuseum.org](http://vietnamvetsmuseum.org)

**AMAZEN THINGS**

BOOK ONLINE

SCHOOL HOLIDAY ACTIVITIES EVERY DAY!  
SCAVENGER HUNTS  
CRAFT DAYS  
SPIN TO WIN  
COLOURING COMPS  
FREE FACE PAINTING!  
and more!!

CHECK [WWW.AMAZENTHINGS.COM.AU](http://WWW.AMAZENTHINGS.COM.AU) FOR DETAILS

**Park Lane PHILLIP ISLAND**

50% OFF AMAZEN THINGS

**HOLIDAY PARK**  
motel, cabins, camping & glamping

1825 Phillip Island Rd, Cowes 5952 2283  
[parklaneholidayparks.com.au](http://parklaneholidayparks.com.au)





Sally Ann Matthews, CWA Twilight Branch president (centre) said the group is holding a bake sale at the Cowes Market on Church this Saturday, as well as serving a delicious Devonshire Tea.

## Delicious Devonshire Tea

### CWA

Phillip Island Twilight Branch will be at Cowes Market on Church this Saturday serving their fabulous Devonshire Teas in the hall. Come and enjoy the famous show scones served with jam and cream, tea and coffee.

Under the CWA marquee you will be able to buy all the favourite biscuits and cakes that CWA cooks are known for. Here you will find caramel slice, sponges, yo-yos, jam drops, nut loaves and cupcakes, jams and preserves.

CWA Twilight is very active in our community and is thrilled to have been able to support vulnerable women, children and families through their fundraising.

The Mum's and Bub's Pantry located in Cowes Library is a great example of a partnership with the library and the Maternal and Child Health Service.

Each week CWA members check the stock levels and replenish. Your support on Saturday will assist with their purchases for the pantry. The members use a shopping list developed with the nurses to encourage mums to cook quick basic healthy meals and also fill the shelves with personal care items for both mum's and young children.

CWA welcome women of all ages to join them and make a difference.

If you would like to know more, please ring Sally 0409 521 825 or come and say hello on Saturday.



Eden Rise is nestled in the hills of Woolamai and is part of the Open Gardens Victoria weekend on September 28 - 29. Tickets at trybooking.com.

## Open Gardens in Bass Coast

### GARDENING

The Open Gardens Victoria spring season kicks off with two beautiful native gardens in Bass Coast, opening on September 28-29.

Nestled in Woolamai's rolling Bass Hills, Eden Rise has stunning views out to Western Port Bay, French Island, and Phillip Island. Originally a horse agistment property with little more than sheds and a handful of trees, owners Daphne and Joe Proietto have spent the past 13 years transforming grassy paddocks into a stunning five-acre garden.

With a degree in botany and a diploma in horticulture, Daphne and Joe's eldest daughter, Claire was responsible for selecting most of the plants in the garden, including a multitude of flowering Australian natives such as kangaroo paws, banksias, bottlebrushes, and the tufted perennial grass Themeda trianda, all of which attract a variety of wildlife, especially beautiful birds.

Eden Rise, 42 Clematis Road, Woolamai.

### Grevillea

Just 20 minutes south, Binchy's Garden in Dalyston is a grevillea lover's dream, with a collection of nearly 200 hand-grafted rare and endangered species gathered over two decades by garden owner and horticulturalist David Binch.

Five years ago, David and Cathie Binch purchased two small blocks of land in a recent subdivision, with the plan to build the house on one block and dedicate the entire 500-square-metre block next door to creating a garden.

The majority of grevilleas in David's collection are from Western Australia, species that struggle to grow in southern Victoria.

Binchy's Garden, 6 Barrier Avenue, Dalyston.

Extras include morning and afternoon teas, exhibition and sale of outdoor sculptures, live music, native plant sales, bird watching guide and indigenous plant guide supplied

Open: Saturday September 28 and Sunday September 29, from 10am - 4.30pm.

Tickets: Adults \$10, Students \$6, under 18 free (each garden).

Tickets for both gardens available at the gate or via Trybooking.com.

[www.opengardensvictoria.org.au](http://www.opengardensvictoria.org.au)



Binchy's Garden in Dalyston is one of two native gardens in Bass Coast, featured in the Open Garden weekend on September 28 and 29.

**\$25 UNLIMITED**  
**BOWLING, LAZER TAG & TABLE TENNIS**



**6:30PM - 9:30PM**

EVERY NIGHT THROUGHOUT THE SCHOOL HOLIDAYS

MINIMUM 4 PER LANE



PHILLIP ISLAND  
**TENPIN BOWLING**  
& ENTERTAINMENT CENTRE

5952 3977

[www.pitenpin.com.au](http://www.pitenpin.com.au)

91-97 Settlement Rd Cowes



Here's the modern family-friendly and work corporate retreat you've been looking for! *Island Manor* has 4 spacious bedrooms, 2 bathrooms - spread over 3 levels. Just 250m from Sunderland Bay beach and moments from Surfie's Point surf beach.

Outdoor, undercover spa, reverse cycle heating and free WiFi.

The wonderful, undercover 6-seater spa - after a big day of sightseeing, settle back with family & friends or work pals with the bubbles & jets for a well-deserved break!

*Island Manor*

[WWW.ISLANDMANOR.COM.AU](http://WWW.ISLANDMANOR.COM.AU)

# KEEP IT LOCAL

## DIRECTORY

### BEAUTY



**Mobile Hairdresser**  
Over 20 years experience  
Claire Sunderland 0408 566 620



**A Do With A View**  
Hairdressing Salon  
Mens and Ladies Cuts Colours and Styles  
Incorporating Vanilla Hair and Beauty Mobile Stylists  
By appointment 0477 113 359 6/14 The Esplanade, Cowes

### HOME

**FURNITURE OUTLET COWES SALE NOW ON**


**MATTRESSES**

ALL SIZES AVAILABLE AT GREAT PRICES  
Queen/double/ single/ king single/king size  
PLUS Beds / tallboys /bedside chests. Etc. etc.  
DELIVERY AND TAKEAWAY AVAILABLE

**BEATS PRICES IN MELBOURNE**  
Furniture Outlet. P/L. 153 Thompson Ave. Cowes.  
0402 042 576.



San Remo | 5952 5379 Shop Local  
info@printitfast.com.au Support Local  
www.printitfast.com.au PRINT LOCAL



**Phillip Island Laundromat**  
Eco Friendly Wash & Dry Self-Service  
NEW: Linen Service Available!  
pilaundromat@outlook.com  
Every Tuesday Local's Day 15% OFF with the CODE: LOCAL15  
4/14 The Esplanade, Cowes, 2nd Floor, above M&O Café



155 Thompson Avenue, Cowes 03 5952 1488



**COWES SELF STORAGE**  
Fully Secured - Full Surveillance  
24 hr Video Surveillance  
Ray White Phillip Island, 56-58 Thompson Avenue, Cowes 5952 2799

**SUBSCRIBE ONLINE**  
www.pisra.com.au  
PHILLIP ISLAND & SAN REMO  
ADVERTISER



SouthCoastTaxi

### PET SITTING



**Ri-jana's Paw-fect Pet Sitting**  
Rianne Ranic | 0432 728 913  
Ri-jana's Paw-fect Pet Sitting

### LEISURE



**AMAZING THINGS**  
OPEN 7 DAYS from 10am  
1805 Phillip Island Rd, Cowes  
Ph: 03 5952 2283  
amazethings.com.au  
FUN | MAGIC | ADVENTURE



Penguin Parade, Churchill Island & Koala Conservation Reserve  
**Phillip Island NATURE PARKS**  
See more & SAVE with a 3 PARKS PASS  
BOOK NOW at penguins.org.au




**Barb Martin BUSHBANK NATIVE PLANT NURSERY**  
Choose from an array of native and endemic plants to Phillip Island (Millow).  
OPEN 9am-3pm Wed, Thur, Sat & Sun  
LOCATION Next to Koala Conservation Reserve, 1810 Phillip Island Rd, Phillip Island  
W penguins.org.au/bushbank T 0427 897 448



**Cruise the Island**  
four departing daily  
www.wildlifecoastcruises.com.au



**Phillip Island Tenpin Bowling & Entertainment Centre**  
91-97 Settlement Rd, Cowes 5952 3977



**The Centre Venue for Hire**  
COWES  
Call 1800 247 669  
thecentrecowes@hotmail.com  
Music. Arts. Dance. Functions. Private Events.



**Melaleuca Lodge Secondhand Book Sale**  
Open 10-12 every Saturday  
**BILLS BOOK SHED**  
1 Watchorn Road, COWES (off Settlement Road)  
0437 949 029

### ACCOMODATION



**RANFURLIE BED & BREAKFAST**  
A cosy retreat that sleeps up to six people.  
From \$75 per person per night including a delicious continental breakfast.  
Call 0434 174 251 for more info.

### FINANCE

Your local bank for locals  
**Bendigo Bank**  
San Remo (03) 5678 5833  
Cowes (03) 5952 3383  
Grantville (03) 5678 8773



**LJ Hooker Home Loans**  
Gippsland  
For all your refinancing or home loan needs in Gippsland and surrounds.  
Gabriel Caffieri - Franchise Owner | Lending Specialist  
gcaffieri@ljhookerhomeloans.com.au | 0421 338 914



**YellowBrickRoad Home Loans**

**PHILLIP ISLAND BRANCH NOW OPEN**

- Home Loans
- Personal Loans
- Refinance
- Investor
- Self Employed
- Commercial Lending
- Private Lending
- SMSF

8 Vista Place Cape Woolamai 3925  
Phillip.island@ybr.com.au  
Joe Reilly M 0402 005 933 T 03 5956 6892

### FOOD & DRINK



**KRISTO'S CHARCOAL ROTISSERIE**  
Online ordering now available  
kristoscows.com.au | 03 5952 3355  
Shop 5 /15-16, The Esplanade, Cowes



**"THE BEST HAMBURGERS ON THE ISLAND"**  
ONE WITH THE LOT ... HEAVEN! CHIPS TOO!  
ORDERS 5907 6796  
RHYLL GENERAL STORE AND BOTTLE SHOP

### AUTOMOTIVE



**Service Centre**  
Phillip Island Tyre Service  
101 Settlement Rd, Cowes 5952 1480



**PHILLIP ISLAND TYRE SERVICE CENTRE**  
3 HARVEY DRIVE, COWES  
03 59 523 305  
PHILLIPISLANDTYRESC.COM.AU  
HELLO@PHILLIPISLANDTYRESC.COM.AU

### COMPUTER SERVICES



**Waterfront Computers**  
(03) 59523312 | waterfrontcomputers.com.au  
fixme@waterfrontcomputers.com.au

### MEDICAL

**NEWHAVEN MEDICAL CLINIC**  
Shop 5 8-10 Forrest Ave, Newhaven  
**Opening hours:**  
8.30am-5pm Monday-Friday  
**Call 5926 6910**  
to make an appointment!



**PHILLIP ISLAND DENTAL YOUR PREMIUM LOCAL DENTIST**  
(03) 9120 2122



**Handley & Anderson FUNERAL DIRECTORS**  
Locally owned and operated by  
Scott & Sharon Anderson 5672 1074



**Bass Coast FUNERAL SERVICES**  
0448 602 005  
www.basscoastfunerals.com.au

### REAL ESTATE



**FIRST NATIONAL PHILLIP ISLAND**  
LOCALLY OWNED AND OPERATED  
CALL US TODAY FOR A FREE SALES APPRAISAL OR PERMANENT/HOLIDAY RENTAL APPRAISAL.  
WWW.PHILLIPISLANDFN.COM.AU 5952 3922



**OBrien Judith Wright**  
San Remo 03 5678 5888  
Cowes 03 5952 3400  
Wonthaggi 03 5672 5558



**Your local experts**  
Specialising in real estate sales, commercial sales and leasing, business sales, residential asset management, holiday accommodation, owners corporation, and storage  
obrejudithwright.com



**RayWhite**  
Selling more properties on Phillip Island than any other agency  
5952 2799  
raywhitephillipisland.com.au



**Stockdale & Leggo**  
PHILLIP ISLAND | SAN REMO  
We see more than property.  
03 8583 4701 stockdaleleggo.com.au/phillipisland



**ALEX SCOTT AND STAFF** Est. 1886  
113a Thompson Avenue, Cowes  
5952 2633 ALEXSCOTT.COM.AU



**GARTH LISLE Property Consultants**  
Shop 3/129 Marine Parade SAN REMO  
5678 5878 www.glpc.com.au  
**WE KNOW REAL ESTATE**

Support the businesses at the  of our community

Advertising Feature  
**Island HOME**  
 YOUR PHILLIP ISLAND AND SAN REMO PROPERTY GUIDE

# Surf Beach secret gem revealed

This tightly held secret has attracted worldwide attention when it was listed in the Qantas inflight magazine feature article 'Seven Secret Beaches Around Australia'

Watch the ever-changing environment from stunning sunrises to surging electrical storms sweeping in from the south west. A mere 189m to the sand to let Melbourne stress be washed away as you take in this stunning setting – what a perfect way to start or finish the day.

You will find this charming property at Bruce Avenue in Surf Beach, with stunning sand dune views.

Nestled on the coastline of Surf Beach this exquisite master-built home with sandstone architectural features has three bedrooms, two bathrooms and offers a perfect blend of comfort in a nature-filled setting.

Enjoy breathtaking views of vegetated sand dunes whilst having convenient boardwalk access through the dunes to a pristine surf beach for walking, swimming, surfing or surf fishing – dog walking is permitted at



This exquisite master-built home with sandstone architectural features has three bedrooms, two bathrooms and offers a perfect blend of comfort in a nature-filled setting.

designated times.

The north-facing open plan living area is bathed in natural light through a large arch feature window creating a warm and inviting atmosphere throughout the day. A feature log fire is the centrepiece to enjoying cooler nights and split cycle air conditioning will ensure comfort on the hottest of days.

Two spacious decks offer additional space to relax, entertain and breath in the sea air ... then unwind to the sound of the surf under a star scape not visible

in metropolitan areas.

The property boasts excellent storage and additional breakout space upstairs for relaxation or daybeds to accommodate extra family and guests.

Whether you're looking for a permanent residence or a holiday getaway, this home combines practicality with a serene, nature-filled environment. Don't miss the opportunity to own this coastal gem.

For more information, call Michael McLeod at First National Real Estate in Cowes, on 0412 712 034.

## FIRST NATIONAL PHILLIP ISLAND

12 BRUCE AVENUE,  
 SURF BEACH  
 \$1,200,000 TO \$1,300,000

Nestled by the coastline of Surf Beach this exquisite master built home with sandstone architectural features has 3 bedrooms, 2 bathrooms and much more to offer a perfect blend of comfort in a nature filled setting. Breathtaking views of vegetated sand dunes whilst having boardwalk access to a pristine surf beach The north-facing open plan living area is bathed in natural light through a large arch feature window creating a warm and inviting atmosphere throughout the day. A feature log fire is the centrepiece to enjoying cooler nights and split cycle air conditioning will ensure comfort on the hottest day.

CONTACT MICHAEL MCLEOD  
 0412 712 034



CHARMING SURF BEACH FORESHORE PROPERTY WITH STUNNING SAND DUNE VIEWS

RIDGEWAY ROAD,  
 KILCUNDA

Just Listed, for details contact the Agent.

CONTACT KENDALL O'GAREY  
 0410 595 130



LAND FOR SALE

**MORE STOCK URGENTLY NEEDED.**

56-58 THOMPSON AVENUE, COWES  
 PH: 03 5952 3922

WWW.PHILLIPISLANDFN.COM.AU  
 INFO@PHILLIPISLANDFN.COM.AU



San Remo | (03) 5678 5885

Cowes | (03) 5952 5100

Wonthaggi | (03) 5672 5558

20 Cove Place, Cowes  
 \$790,000



**Just sold**

17 St Andrews Drive, Ventnor  
 \$650,000



**Just sold**

**Spring is selling season!**

Get your current market appraisal and report today by scanning here

For all things OBrien, visit  
[obrejudithwright.com](http://obrejudithwright.com)



1/113-119 Justice Road,  
 Cowes VIC 3922

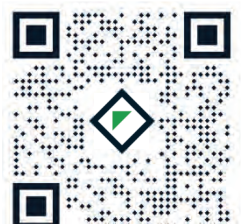
4 beds 3.5 baths 4 cars

**Exquisite Coastal Living in the Heart of Phillip Island**

This luxury coastal residence will take your breath away with its perfect blend of elegance and comfort, ideal for those seeking a permanent sea change or a lavish holiday home.

We welcome you to register for an inspection in order to experience this stunning furnished property first-hand. If you're considering selling and would like to capitalise on the Melbourne buyers heading down, reach out for a confidential conversation.

Register your interest



# Island HOME

Advertising Feature

## YOUR PHILLIP ISLAND AND SAN REMO PROPERTY GUIDE



A second living space offers a separate zone ideal for relaxation or entertaining, ensuring everyone in the family has their own space.



An exceptional four-bedroom family residence, perfectly situated in the sought-after Whytesands Estate in Cowes.



The gourmet kitchen boasts elegant stone benchtops, a high-quality 900mm oven, and stainless-steel appliances.

# Immaculate family home

Welcome to this exceptional four-bedroom family residence, perfectly situated in the sought-after Whytesands Estate in Cowes.

This stunning home meets the modern family's lifestyle needs and is positioned near the walking track that allows for an easy stroll to the safe, north-facing bay beaches of Cowes and the Anderson boat ramp.

Set on a generous 540sqm allotment, this immaculate property features a spacious double garage with internal access. The expansive master bedroom serves as a luxurious parents' retreat, complete with its own air conditioning unit, ceiling fan, a full walk-in wardrobe and a sleek ensuite featuring a large shower. Three additional generously sized bedrooms provide ample space for family

and guests.

The heart of the home is the open plan kitchen, dining and living area. The gourmet kitchen boasts elegant stone benchtops, a high-quality 900mm oven, and stainless-steel appliances. The dining area opens onto a large, covered alfresco space, perfect for outdoor entertaining, while the living area has sliding door access to the rear yard and is equipped with

an air conditioning unit, providing year-round comfort.

A second living space offers a separate zone ideal for relaxation or entertaining, ensuring everyone in the family has their own space. The family bathroom is well-appointed with both a bath and a shower. Additional features include solar electricity, contributing to energy efficiency and sustainability.

Residents of the Whytesands Estate enjoy access to park areas with BBQ facilities, a basketball ring, and a flying fox, making it an ideal environment for family fun and outdoor activities.

Don't miss the chance to make this dream home your own. Contact Alex Scott & Staff Cowes at 03 5952 2633 to arrange your private inspection today.

**ALEX SCOTT AND STAFF** Est. 1886

RENTING AUCTION CLEARING SALES FOR LEASE RENT STOCK HOLIDAY FOR SALE BUY IN RENTALS



## Yarrinup

COWES

Your new life starts here

Church St

Bellavista Rd

With only 59 masterfully planned lots, Yarrinup Estate offers a bespoke lifestyle enriched with an abundance of amenities.

Registrations of interest now open - Contact the team at Alex Scott and Staff  
 03 5952 2633 | [cowes@alexscott.com.au](mailto:cowes@alexscott.com.au) | Call or Text Chase Watters 0423 272 819

Greg Price 0419 337 441 | Brian Silver 0407 347 509 | Maree Malloy 0408 316 715 | Chase Watters 0423 272 819 | 113a Thompson Avenue, Cowes 5952 2633 | [ALEXSCOTT.COM.AU](http://ALEXSCOTT.COM.AU)

# BUSINESS GUIDE

LOCAL TRADES AND SERVICES

AIR CONDITIONING

**ALWAYS COOL**  
AIR CONDITIONING  
HEATING & COOLING SPECIALISTS  
1800 931 631  
www.alwayscoolair.com.au

BLINDS/AWNINGS

*Creative Blinds & Awnings*  
FREE MEASURE & QUOTE  
Mobile Showroom  
Peter: T/F: 5952 5092 M: 0417 358 650

CARPENTER

**CARPENTRY**  
Est 1982  
Home Renovations  
Maintenance & Repairs  
Window Replacement | Decks  
John 0447 975 626

DRIVEWAY RESTORATION

CLEAN, PRESSURE BLAST AND RESEAL  
**DRIVEWAYS AND PATHS**  
MARK: 0418 105 262

AIR CONDITIONING

**BONUS** GIFT CARD CAMPAIGN  
MITSUBISHI ELECTRIC DIAMOND DEALER  
OFFER ENDS 31 JULY 2023  
**CITY TO COAST AIR**  
WONTHAGGI  
SUPPLY, INSTALLATION, REPAIRS & MAINTENANCE  
Shop 1/13 Inverloch Rd, Wonthaggi  
0400 001 465  
citytocoastair.com

BLINDS & CARPET

**SOUTH COAST FLOORING XTRA**  
A FABULOUS FLOORING EXPERIENCE  
155 Thompson Avenue, Cowes  
03 5952 1488

CABINET MAKER

**JOINERY SMOOTH**  
RECYCLED TIMBER CABINETS  
KITCHEN'S  
INSTALLATION SERVICE  
TRADITIONAL SAUNA'S  
BESPOKE DESIGN  
0457 239 600  
MITCH.JOINERYSMOOTH@GMAIL.COM  
WWW.JOINERYSMOOTH.COM.AU  
JOINERYSMOOTH  
ACN 672 446 769

EARTHMOVING

**MK EARTHWORKS**  
BULK CARTAGE \* SITE CLEAR \* TRENCHES \* DRILLING  
• Excavations • Free quote / consultation  
• Demolitions • Experienced local business  
• Drive/Pathways • Innovative solutions  
• Retaining walls • Quality workmanship  
• Spoil removal • Transparent communication  
• Full compliance / insurance  
• Tight access specialists  
\* TIPPERS \* EXCAVATORS \* SKIDSTEER \* AUGERS \* ROLLER \*  
em: mkearthworks@gmail.com  
ph: Mick - 0408 575 472

AIR CONDITIONING

**COASTAL**  
REFRIGERATION & AIR-CONDITIONING  
03 5678 5190  
office@picra.com.au  
Coastal Refrigeration and Airconditioning  
coastal\_refrig\_and\_aircon  
AU51426  
COMMERCIAL & DOMESTIC  
SERVICE, INSTALLATION, MAINTENANCE AND SALES

BUILDER

SPECIALISING IN EXTENSIONS, RENOVATIONS AND MAJOR REPAIRS  
OVER 35 YEARS OF EXPERIENCE  
**ISLAND DESIGN & BUILD**  
0417 503 003  
ROB NORTON  
INSURED & LICENSED BUILDER DB-U 61563

CONCRETER

**RAY MATCOCK CONCRETING AND EXCAVATIONS**  
• Exposed aggregate paving  
• Coloured - Slate - Brick paving  
• House slabs - Garages  
PH: 5952 3853 FAX: 5952 5103  
Mob: 0418 560 202

EARTHMOVING

**Bobcat/Excavator Tipper Hire**  
All aspects of earthmoving, driveways, draining and landscaping  
Rubbish removal  
0418 372 399  
Servicing all Phillip Island areas  
**Ray's Skip Hire + Earth works**

AIR CONDITIONING

**southcoast air**  
Air conditioning & refrigeration  
Cooling & heating specialists  
Split system sales & complete installation  
Service, repairs Electrical contractor  
0402 044 377  
Dave Miller PIC. 43216  
L109866 REC26099

CAR REMOVAL

**BASS COAST CAR REMOVALS**  
Unwanted cars removed free  
CHEAP TOWING NOW AVAILABLE  
Call Shane  
5678 2002 or 0407 599 616

CONCRETER

**TIM NEWMAN CONCRETING**  
• Exposed aggregate • House slabs  
• Driveways • Footpaths • Sheds & garages  
• All concreting needs  
Tel/Fax 5956 8791  
RMB 2180 Ventnor 3922 E:newman@waterfront.net.au  
0419 312 805

ELECTRICIAN

**JACKSON ELECTRICAL & AIR CONDITIONING**  
• Reliable & fully insured  
• Split system installers  
• Air conditioning sales and service  
• TV Antenna & data  
• All types of electrical services  
• Free quotes  
• Hot water systems  
• Ovens and cooktops  
CALL MICHAEL 0427 633 667  
CAPE WOOLAMAI REC 17893 LIC. 48834

AUTOMOTIVE

Locally owned mechanic shop for all your vehicle needs  
NOW OPEN  
**JA AUTOMOTIVE**  
Vehicle servicing  
General maintenance  
Vehicle diagnostics  
Brakes  
319 White Road, South Dudley  
Josh Wilson 0478 054 037

CARPET CLEANING

**ALLFLOOR CARPET CLEANING**  
WOMAN OWNED AND OPERATED BUSINESS  
• Operating 7 days a week  
• NOW offering DRY cleaning on Carpets and Rugs  
• Truck mounted Steam cleaning system for Carpet, Upholstery and Rugs.  
• Residential and Commercial  
• End of lease, Airbnb, prepare home for selling, refresh and stain removal.  
CONTACT TRACY  
0400 481 891 info@allfloor.com.au

CONCRETER

**NEW WAVE CONCRETING**  
0402 454 742  
**Luke Hinrichs**  
FACTORY 3, THE CONCOURSE

FURNITURE RESTORATION

**The WOOD WIZARD**  
COWES  
FURNITURE RESTORATION  
BESPOKE TIMBER FURNITURE  
CALL BOB, 0418 173 388  
5 HARVEY DRIVE

ADVERTISING

To advertise in the **Business Guide**  
CONTACT JANE ON  
5952 3201 OR EMAIL  
ADS@PISRA.COM.AU

COMPUTER REPAIRS

**WATERFRONT COMPUTERS**  
SALES, REPAIRS & UPGRADES TO PC & MAC  
PC & Mobile Accessories, Ink & Toner  
Exetel NBN & Mobile Reseller partner  
Modems, Routers, WiFi powerline & extenders  
Web, Mail & Domain hosting services  
130 Silverleaves Ave | Ph 5952 3312  
Open 9 to 5 Weekdays, Sat 9 to 12

DECK RESTORATION

Enjoy your outdoor space for years to come with DeckSeal!  
DECK SANDING, CLEANING, OILING AND MAINTENANCE.  
**DeckSeal**  
Call Nick on 0411 988 401  
basscoast@deckseal.com.au  
www.deckseal.com.au

GAS SUPPLIERS

**WRIGHTON GAS SUPPLIES**  
Agency for **ELGAS**  
Servicing Phillip Island & San Remo  
For all household gas supplies  
**Bruce Wright**  
Tel: 5952 3252 Mobile 0409 164 441

DECKS & VERANDAHS

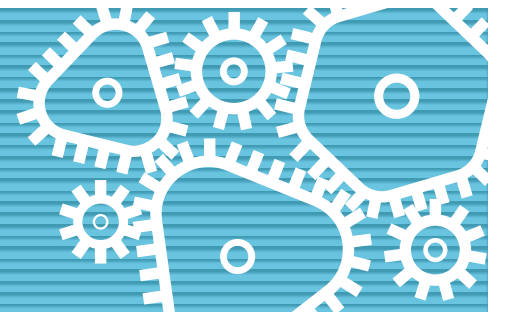
**ISLAND DECKS**  
Specialists in all types of decks and verandahs  
REGISTERED Building Practitioner  
John Johnston 0414 714 179

GUTTER CLEANING

**GUTTER-VAC**  
Clean. Safe...Easy  
Vacuum gutter cleaning,  
gutter guard, solar panel cleaning,  
ceiling cavities cleaning.  
0427 393 291  
swgippsland@guttervac.com.au

# BUSINESS GUIDE

## LOCAL TRADES AND SERVICES



### HANDYMAN

**affordable quality**  
home maintenance and repair.  
Decks. Verandahs. Pergolas.  
Renovations and extensions.

**MASTER BUILDER DB\_U 8980**

Peter Stasinowsky  
Ph 0408149488 email. pstaza@hotmail.com

### LAWN MOWING

**Call 131 546**

- ✓ FREE QUOTES
- ✓ Fully insured
- ✓ Police checked
- ✓ OH&S compliant
- ✓ All work guaranteed

**RISK FREE**

Lawn mowing, gardening, pruning, hedging, rubbish removal, gutter cleaning, weeding, mulching, odd jobs

www.jimsmowing.com.au

### PLUMBING

**CHUNKS PLUMBING**

**All types of plumbing**  
**24 HOUR SERVICE** Lic # 48411

- Gas • Hot water units
- Sewers, storm water, blockages

A local, reliable business

Daniel Campbell - 0438 520 546  
daniel@chunksplumbing.com.au

### SOLAR

**islandenergy**

**SOLAR - BATTERIES - OFF GRID**

ACCREDITED MASTER ELECTRICIAN APPROVED SOLAR RETAILER

**1300 534 110**

REC 19496

### HANDYMAN

**SJC HOME MAINTENANCE**  
Qualified Tradesman with over 35 years experience

Call for a Free Quote  
No job too small

Quality work at a great price, Fully insured

Call Mick 0424 414 495  
www.sjchomemaintenance.com.au

### MARINE MECHANIC

**TOPWATER MARINE**  
0402 761 692

- Inboard / outboard motor servicing and repairs
- Accessory Installations and electrical work
- Trailer servicing and modifications
- Anchor winches • Boat detailing • Insurance work

www.topwatermarine.com.au | topwatermarine@yahoo.com  
64 Dixon street, Inverloch

### PLUMBING

**Same Day Plumbing Service**

**Morris Brothers**  
Lic 43482

Free Quotes - Pensioner Discounts  
**0403 116 435**

### STEEL

**ISLAND STEEL**

Steel fabrication • Stainless/Aluminium fabrication  
Steel sales cut to order • Sheetmetal fabrication  
Guillotine and folding • Gal lintels / Retaining wall posts  
Truck mounted CRANE HIRE • Genie lift and generator hire

Call for a quote WE DELIVER

14-16 The Concourse, Cowes 5952 1432  
Email:sales@islandsteel.com.au

### HYDRAULIC AND MECHANICAL

**ROTARET**  
HYDRAULIC ENGINEERING

Hydraulic, pneumatic and mechanical repairs.  
Design and fabrication.  
We also stock industrial supplies.

Factory 2, 3 Cyclone St, Wonthaggi  
(03)5672 5924 | 0448 583 118  
Email: jason.mottershead@rotaret.com.au

We are More than Just Hose and Fittings

### PAINTER

**THE PAINT GUY**  
INTERIOR / EXTERIOR

Domestic Commercial  
Rentals End of lease Repaints  
We will do the small jobs

CALL FRANK  
0455 596 433

### PLUMBING

**RELIABLE PLUMBER**  
Fast Response at an honest price

**Tappy the Plumber**  
0427 776 808

- NO CALL OUT FEE
- Leaking taps & toilets
- Hot water systems replaced
- Vanities & water
- Filters installed
- Gas fitting
- General plumbing

email: tappy@waterfront.net.au  
Fully Licenced & insured. All work guaranteed Lic. No. 119289C

### STORAGE

**Island Secure Storage**

Large & Small Units  
Boxes & Packaging  
Security Monitoring  
On Site Manager  
24hr / 7 day access

Phone 0400 214 446  
4 Industrial Way, Cowes 3922  
Alt Ph: 5952 1432 Fax: 5952 5690  
Email: storage@islandsteel.com.au  
Web: www.islandstorage.com.au

### LANDSCAPING AND DESIGN

**THE STONE STORE**

0424 426 932

FACTORY 14, 71 FRANKSTON GARDENS DRIVE, CARRUM DOWNS  
WWW.THESTONESTORE.COM.AU

VICTORIA'S PREMIER DESTINATION FOR ALL THINGS NATURAL STONE AND PORCELAIN TILES.  
OVER 500 HUNDRED PRODUCTS TO CHOOSE FROM!

### PAINTER & DECORATOR

**ISLAND RPM PAINTING & DECORATING**  
YOUR HOME PAINTING SPECIALISTS

Qualified—Over 30 years experience  
Interior & Exterior Homes  
Weatherboards & Decking  
Family owned business  
Decluttering Service

FREE QUOTE CALL  
0407 163 573

Island RPM Property Maintenance  
islandrpm.pm

### RESTUMPING

**KEANE & SON**  
House Restumping & Levelling

**Paul Keane**  
0427 080 309

keanesrestumping@outlook.com  
PO Box 696, Wonthaggi, Vic, 3995

### TRAFFIC MANAGEMENT

**eventops**

**TRAFFIC MANAGEMENT** BASS COAST

EOGTRAFFIC.COM.AU  
5900 2932  
projects@eventopsgroup.com.au

### PAINTER & DECORATOR

**B&C Roberts Decorating Services**

**Brian Roberts** 0417 529 042

### RESTUMPING

**RESTUMPING & RELEVELLING**

Restumping, Levelling,  
House Raising & Repacking,  
all renovation works

**CALL 0418 506 788**  
Licence DBL24625

### TREE SERVICES

**SL Tree Care**  
NO JOB TOO SMALL

- Qualified
- Storm Damage
- Tree Maintenance
- Lawn Mowing
- Tree Removal
- Garden Maintenance
- Fruit Tree Pruning

FREE QUOTES

Call Shaun **0423 910 554**

### LANDSCAPING & DESIGN

**FIRST FOOT FORWARD**

Call Kirk 0423 054 520

Concreting  
Landscaping  
Retaining  
Fencing  
Paving  
Crossovers  
& more...

LANDSCAPES & CONCRETING

### PLASTERING

**Wp WONTHAGGI plaster**  
& Construction Supplies

T: 5672 1535 F: 5672 3786  
42 INVERLOCH ROAD, WONTHAGGI  
wonthaggiplaster.com.au

CEMINTEL GYPROCK CSR NATIONAL MASONRY EARTHWOOL

### SLIDING DOOR REPAIRS

**SLIDING DOOR REPAIRS**

Are your doors sticking, catching or just not sliding properly?

- Timber & Aluminium Sliding Doors
- Bi Fold Doors
- Cavity Doors
- Wardrobe Doors
- Security Doors
- Track & Roller Replacements
- Screen Replacements
- New Locks Fitted

And Much More

Now Servicing Phillip Island

**ALL Sliding Door REPAIRS MELBOURNE**

Ph 0438 538 244  
info@asdrm.com.au  
www.allslidingdoorrepairsmelbourne.com.au

### WASTE MANAGEMENT

**WHEEL-A-WASTE**

Family Owned & Operated

Ph: 5672 2056

Lot 1 Skip Lane Wonthaggi 3995  
E:accounts@wheelawaste.com  
www.wheelawaste.com.au  
ABN 93 050 132 217

DOMESTIC COMMERCIAL INDUSTRIAL

### LAWN MOWING

**Dave Costello**

For all your lawnmowing, landscaping & rubbish removal

Call for a free quote  
**0411 175 957**

### PLUMBING

**brenex** 24 hours 7 days  
plumbing & gasfitting

- Roofing - Gas - Water - Hot Water - Pumps
- Water Tanks - Sewers & Storm water - Blockages

Brendan Duncan 0418 342 649  
PIC No. 26296  
Email | brendan@brenexplumbing.com.au

### WINDOW CLEANING

We promise sparkling windows every time!

Discounts apply for Pensioners

**PREMIER WINDOW CLEANING**

Residential & commercial work  
Call Maria 0422 258 948  
Email: hansamaria39@gmail.com

## LETTERS TO THE EDITOR



Tell us your views with a Letter to the Editor (350 word limit). Email to [advertiser@pisra.com.au](mailto:advertiser@pisra.com.au), or submit online at [pisra.com.au](http://pisra.com.au)

### Keep watch

With spring bringing warmer weather, Royal Life Saving Australia is asking all owners of backyard pools to check their pool fences and pool gates.

Children under five are curious and fearless, and their love of water puts them at risk of drowning.

Tragically, every year in Australia we lose on average 20 young children to drowning, with half of all drowning deaths in young children occurring in backyard swimming pools. The majority are aged just one year old. This is because the risk of drowning triples at the age of one year, when children become more mobile.

We know that eight times the number of children who die go to hospital after a non-fatal drowning incident. That is more than 150 children aged under five each year, some of whom will be left with life-limiting disabilities.

While active supervision is the best protection against childhood drowning, no parent or caregiver can watch a young child 24 hours a day.

Ensuring you have a functioning and compliant pool fence and working gate as an additional barrier between young children and water for all those moments when life intervenes can literally be life saving.

You can download a free home pool safety checklist at [www.royallifesaving.com.au/keepwatch](http://www.royallifesaving.com.au/keepwatch)

Wet weather conditions can wash away topsoil and weaken fences. Check no fence posts have come loose from the ground. Make sure the gate is still self-closing and self-latching and is never left propped open under any circumstance. Pack pool toys away so they are not an overwhelming temptation, and empty portable pools when not in use. It is also a good time to brush up on CPR skills ahead of summer.

By spending a bit of time checking the pool fence, pool gate and the area around the pool is secure, including no furniture or structures little people can climb to access the pool, you could prevent a tragedy.

Keep watch and protect the littlest members of your family.

*Justin Scarr, CEO  
Royal Life Saving Society Australia*

### More excuses from council

Further to the article "Community Group won't stop until access ramp demolished" (Advertiser, September 18). In response to the council spokesperson who said that due to the length and additional space required ... "The proposed site in Lock Road would obstruct vehicle access". What utter rubbish.

Do these people ever visit our towns? There is actually five metres more space on Lock Road than in the car park where they have placed the disabled parking. As for obstructing access, it's mind blowing how they could even say this! In fact, when cars are parked in the spot behind the current disabled park, the disability car park will be difficult to be accessed, as the corridor between the parking bays is so tight!

Do the council spokespeople look up a book of excuses to placate the masses? Wouldn't it be refreshing to just once hear them say, "Yes, we got it wrong, what can we do to fix it!"

The inference that the Rhyll Community is against disability parking is absolutely ridiculous. We have an elderly community and welcome the all-ability access parking, and recognise it was long overdue. Our beef is with the overbuilt, concrete monster thrown on us, when it is absolutely feasible to make a more simple and larger area for disability parking on Lock Road, regardless of what excuses Bass Coast Shire Council like to use.

*Judy Lawrence, Rhyll*

### Red bin pick-up

In my term as councillor one of the hot issues the community spoke to me about constantly was the summer pick-up of the red (landfill) bin. I tried twice to have the red bin picked up each week from Christmas to Australia Day. Sadly, twice my motion was defeated.

With the recent announcement by the State Government that composting will become optional, it has become urgent to put in place measures to have the red bin (landfill) picked up weekly from Christmas to Australia Day. Under the new State Government proposal, the kitchen caddies with the green liners will be eliminated. It is inevitable that the food scraps will end up in the red bin. The argument that a weekly pick up will create more rubbish is ludicrous. A weekly pick will only collect the rubbish that is already there. In the summer months we cannot have a situation where the stinking red bin is "cooking" in the summer heat. We cannot allow the red bin to be only picked up once a fortnight. Besides the stench, it is also an Occupational Health and Safety issue.

Phillip Island is one of Victoria's leading tourist destinations. If we want to keep that reputation, measures must be put in place now. It will require some lead time to renegotiate the waste contract to accommodate the extra pick ups.

If elected, I will again move to have the red bin picked up each week from Christmas to Australia Day.

*Ronnie Bauer, Candidate for the Island Ward*

### Help the Salvos

There is nothing quite like an Australian summer. Between the comforting warmth, the adventure of being outdoors and the enjoyment of sharing in the Christmas and New Year seasons, there is something very special about this season in Australia.

However, it isn't all sunshine and rainbows. In fact, traditionally this season is responsible for some of the most devastation, heartbreak and destruction that we will see all year. Unsurprisingly, the cause of so much heartbreak are our natural disasters.

The Salvation Army knows this all too well. Salvation Army Emergency Services (SAES) teams are stationed around the country ready to

spring into action whenever a disaster hits; whether it be fire, flood, cyclone, earthquake, or any number of physical disasters, the Salvos are there.

As we look towards the upcoming disaster season, The Salvos are preparing, but we need the support of the Aussie public to help us do this.

We need 1000 Aussies to sign up to volunteer with the SAES by the start of summer, to ensure we can meet the needs of the community wherever a disaster might strike.

During a disaster, The Salvos are responsible for providing meals and refreshments to first responders and evacuees, as well as material needs for displaced community members. We also are there for people, offering a listening ear, a compassionate hug, and a shoulder to cry on.

Being a volunteer with the SAES is a profound experience. It is immensely rewarding personally, but also makes an incredible difference to those in some of the most harrowing circumstances following a disaster.

Please consider joining our SAES family and help us to support those who aren't able to support themselves.

To sign up as a volunteer for The Salvation Army Emergency Services, or for more information, visit [www.salvationarmy.org.au/emergency-services/](http://www.salvationarmy.org.au/emergency-services/)  
*Daryl Crowden, Head of Salvation Army Emergency Services*

### Transparency needed

The report on the 2024 Bass Coast Shire Council Survey is one of the reasons I have chosen to stand for the Bass Coast council election.

The summary highlighted the focus areas of "... transparency and communication around its decision-making and consultation processes." These areas were ranked lowest by residents and those aged 65+. I believe the cause is the seemingly exclusive use of electronic media (social media/web pages) to communicate. This ignores the fact that many in the above demographic are unable or unwilling to use electronic means.

I recall other councils in the state provide information on plans and projects via print included in the quarterly rate notices. Bass Coast could adopt this method of communication as well as use of print media to better illustrate reasons for decisions and to demonstrate clear direction for ratepayers. To reduce waste, this could be an "opt-in" program.

If elected to council, I will advocate for more inclusive means of communication for a better-informed community

*Darrell Silva, Candidate for Island Ward*

### Mental Health awareness

Being unable to attend the recent forum on mental health, I appreciated the comprehensive article in last week's edition of the Advertiser, which is interesting reading about a much-needed discussion. Thanks to the forum organisers and all presenters.

During my own challenging health journey since 2020,

I have researched lots about the human body and mind, and Jan Child's statement that "the best protection for your own mental health is to sleep well, eat well and exercise", jumped out at me as being extremely sensible. Clinicians world-wide have been saying just this for many centuries. To me Jan's statement is an excellent approach, placing mental health in the context of our overall health. The mind does not exist in some ethereal part of us. It is intimately tied in with every function in our bodies and brains.

I now know that we comprise about 50 per cent human cells and the rest belong to non-human organisms that have evolved over millions of years to assist us function as they get about their own lives inside us and on us.

To stay healthy, or to regain health, we absolutely need to learn to be good property owners for our trillions of tenants, and to learn proactive ways to keep the conversation calm among them most of the time. So, to Jan's list I would add a few more suggestions:

Develop ways to de-stress as needed each day. For example, I have compiled over 30 drug-free, cost-free, do-it-yourself strategies to reduce anxiety.

Get out into the community and find connections that nurture you;

Get out into nature;  
Breath well and sing;  
Love your remarkable body, mind and spirit;  
Be kind to yourself and others;

And be sure to use the power you have over the Off button when your devices feed you destructive messages.

*Christine Grayden, Ventnor*

### Car park concerns

I am once again appalled with the waiver of the majority of car parking spaces required for the new proposal for the Isle of Wight site by council.

Everybody that lives on the island knows they have to leave their car locked at home for the summer or do their shopping off island as it is almost impossible to find parking spaces especially around the Esplanade area.

I went to the "Meet the Candidates" meeting at the RSL on September 17; it was an interesting evening with some contentious and thought-provoking questions. Unfortunately, we ran out time and I was unable to ask my two-part question. A couple of people did touch on the subject which was on the issue of waivers of parking spaces.

My question was to all candidates.

Would you, if elected, insist council immediately stop waivers of car parking spaces and strongly lobby for the council's building policy to be changed to reflect community's needs which is that all parking must be on site, for any development that comes before council [I know that this can be done].

The second part of my question was again to all candidates. Would they research the so-called "Parking Trust" to ascertain how much money is

in it, what is the criteria for usage of the trust and what, if any monies, have been spent from it.

Can we as a community ask for an independent inquiry into this appalling practice?

*Pauline Taylor, Cowes*

### Vote climate

The purpose of this letter is to make sure everybody knows the Vote Climate organisation has emailed questionnaires to all candidates in all 79 local councils. This way it's possible for us all to know how seriously each candidate is taking what now amounts to climate breakdown. Presuming that they care enough to complete the questionnaire, results will be available to all at Vote Climate website: [www.voteclimate.net.au](http://www.voteclimate.net.au)

Deniers of the climate crisis have tried to say that we only need to stop emissions of GWG's (Greenhouse Warming Gases), if we want the climate to change back again. Other people have been telling them "stop it before you go blind". So now, it's unlikely to go back to previous steady state but, if we act quickly and firmly enough, damage will not be quite so drastic.

*Bernie McComb, Cowes*

### User pays – cash grab or fair deal?

There was an interesting article in The Age (September 23, 2024): Paid Parking is coming to these popular day-trip areas.

The article focuses on the Warburton area and references the Mornington Peninsula where options will be discussed after the council election.

The foundation document for Phillip Island has always been (PITS) – Integrated Transport Strategy which has the objective to "reduce the domination of private vehicles and support walking, riding and public transport".

The guiding authorities have for many years avoided a network solution and rather support extra lanes across the island.

The most significant traffic growth estimate is that with 4 per cent annual traffic growth, the number of vehicles will double in 17 years, then double in another 10 years and then five years.

The Age article is a good starting point to get serious about the development and associated traffic on our beloved island.

Melbourne's eastern suburbs are some of the fastest growing urban areas in Australia.

This year's council election could be the deciding moment for gridlock. Please vote wisely.

*Phil Wright, Smiths Beach*

All letters are published at the discretion of the editor. Letters may be edited for length, grammar or legal reasons. Priority will be given to current local issues and events. All letters must include the author's full name and address (only the name and location will be printed).



The hardworking team from the Westernport Hotel, Phillip Island Winery and Marias, who prepared a magnificent seafood feast for Friday night's Seafood Festival Cocktail Dinner.



The Invy Horn Jam took to the streets of San Remo, providing colourful and musical entertainment for the TIDAL Festival. All photos by Nici Cahill, Snapshot Photography. More photos at pisra.com.au

# TIDAL shines despite grey skies

**EVENT**

The weather wasn't kind, but the community spirit shone through at this year's TIDAL Seafood Festival on the weekend. Activities included the Deckies Race, a prawn peeling competition, the Blessing of the Fleet – and of course the chance to sample, buy or win delicious local seafood. With food trucks and stalls of local produce, there was plenty to keep hunger at bay, and entertainment was provided by

the roving Invy Horn Jam and students from Newhaven College. The weekend kicked off with the popular Seafood Festival Cocktail Dinner at the foreshore marquee. Saturday and Sunday saw crowds enjoying entertainment, kids activities, food trucks and seafood preparation demonstrations. Sunday's program was specifically aimed at the kids, including a special screening of the Bluey movie. [tidalseafoodfest.com.au](http://tidalseafoodfest.com.au)



Mackenzie Cameron on bagpipes and his brother James on drums were part of the entertainment at this year's TIDAL Festival.



Members of the San Remo SES brigade were on hand throughout the day. Profits from the festival entry fee will be split between the local SES and CFA branches.



Organiser Craig Edmonds of Jim's Bait & Tackle, with wife Robyn.



Volunteer Barry Williams embraced the seafood theme with his colourful outfit.



Simone and Warren Dickie with John Dickie at the Cocktail Dinner on Friday night.

## We're now over halfway through the project.

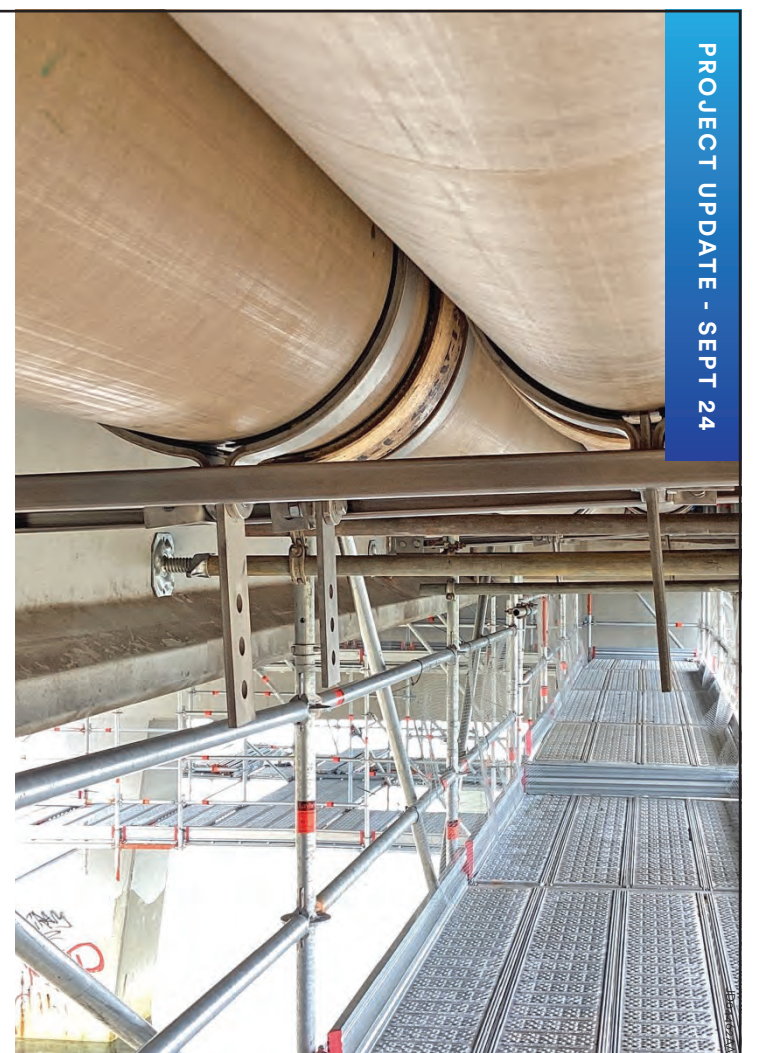
Phillip Island's primary water supply and San Remo's sewerage pipelines are edging closer to being fully refurbished as works progress underneath the San Remo / Phillip Island Bridge.

**KEY INFORMATION**

Marine users	If your ideal fishing spot, jet ski or boating destination requires you to travel underneath the bridge, for your safety, you must not travel underneath the scaffold. Only navigate through the designated span with red and green lateral markers on the bridge.
Road users	Mass Limits still apply. The 42.5 tonne vehicle mass limit on the bridge remains in place while scaffold is installed in central spans of the bridge. Thank you for your patience with recent day time partial lane closures.
Site compounds	An additional site compound will be established at Newhaven, on the grassed area near the bridge, in approximately mid-October 2024. Both the San Remo and Newhaven site compounds will remain in place until the project is complete in approximately late-January 2025.



[westernportwater.com.au](http://westernportwater.com.au)



PROJECT UPDATE - SEPT 24



# CLASSIFIEDS SEEK, BUY AND SELL



## DEATHS

**COX, Don:**  
19/04/1936 – 18/09/2024  
Loved long term companion of Christine Broderick.  
Much loved by Joe, Anna Rose and Patrick Hildebrand (dec.).  
Loved brother of Norma (dec.), James, Mavis (dec.), Lois (dec.), Cliff (dec.), Arthur, Peter, Howard and Jennifer.



**Mr Donald Kenneth Cox**  
Service Details:  
3/774397  
Australian Army  
The President, Committee, Members, Management and Staff of the Phillip Island RSL Sub-Branch deeply regret to announce the passing of Donald Cox, a respected Service Member of our Sub-Branch. Our sincere condolences are extended to The Cox Family.  
LEST WE FORGET.

## DEATHS

**WALTON, Jill:**  
Fond memories of a lovely lady now at peace and reunited with Stan.  
Love and thoughts with Jen, Deb, Rob and Jack.  
– Lynne & Kelsey Rae McFadzean.  
**WALTON, Jill:**  
Passed away peacefully on 15.9.24  
Dearly loved Auntie Jilly of Lois and Stephen and Troy and Leigh and family.  
Sweet dreams Jilly.

## FUNERALS

**COX:**  
The Funeral Service for Mr. Donald Cox will be held at St. John's Uniting Church, 85 Chapel Street, Cowes on TUESDAY (Oct. 1, 2024) commencing at 1:00pm.  
A Private Cremation will follow.  
For live-streaming go to [www.handleyandandersonfunerals.com.au](http://www.handleyandandersonfunerals.com.au)  
Handley & Anderson FUNERAL DIRECTORS

## SITUATIONS VACANT



Newhaven College is an independent co-educational school on Phillip Island offering quality education for students from Prep to Year 12.  
Newhaven College is seeking applications for:  
**WOODWIND SPECIALIST & BAND PROGRAM**  
Part Time (approximately 2 days)  
Temporary, fixed term contract.  
Commencement 2025.  
For more information and details on requirements, duties and responsibilities, visit our website [www.newhavencol.vic.edu.au/about/work-at-newhaven](http://www.newhavencol.vic.edu.au/about/work-at-newhaven) or contact Human Resources Manager, Leisa Lomax on 03 5956 7505.  
Applications to be submitted to: [recruitment@newhavencol.vic.edu.au](mailto:recruitment@newhavencol.vic.edu.au)  
**Applications close Monday 7 October 2024 at 5 pm**  
Newhaven College is a child safe environment. Every child has a right to be safe, and at the College we have a zero tolerance for child safety risks (including child abuse and reportable conduct). As such, preferred applicants will be subject to child protection screening, background and reference checks, verification of identity checks and must adhere to the College's child safe practices, as outlined in the Child Protection Program policies available on the College website.

## SITUATIONS VACANT

**Position Vacant**  
**DELI TEAM MEMBER**  
San Remo IGA is seeking a passionate and enthusiastic individual to join our Deli Team. This position requires some weekend work.  
Casual, permanent part-time and full-time options available.  
The successful applicant must be self motivated and able to work in a team environment.  
*If this sounds like you or you would like to know more please get in touch!*  
**EMAIL YOUR RESUME TO:**  
[shayne@sanremoiga.com.au](mailto:shayne@sanremoiga.com.au)  
135 Marine Pde, San Remo, VIC 3925 T: (03) 5678 5337

**EMAIL YOUR CLASSIFIEDS TO**  
[ads@pisra.com.au](mailto:ads@pisra.com.au)  
PHILLIP ISLAND & SAN REMO  
**ADVERTISER**

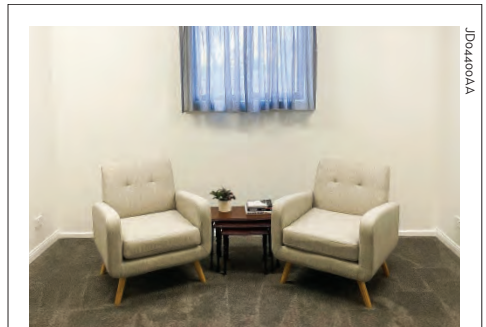
## SITUATIONS VACANT

**Shape the future**  
**Make a world of difference in the world of water.**

**Senior Engineer Asset Strategy**  
Senior Executive Officer, full time, ongoing  
Lead the development of Westernport Water's long-term investment program ensuring asset capacity for future growth and climate impacts.  
Applications close:  
**10 October 2024**  
Further details:  
[westernportwater.com.au/vacancies](http://westernportwater.com.au/vacancies)  
**1300 720 711**



## FOR RENT



**ROOM FOR RENT!**  
Novel Aspects Psychology in Newhaven has a room available to rent.  
We are seeking a health professional and/or service to rent out a room in our space. This health professional will have access to an office space, kitchen, bathroom facilities, a private waiting area for clients, as well as the room.  
Renter will have the ability to furnish and decorate their room. The clinic has a cleaning service once a month, that will also clean the room. We are also open to other serious enquiries. Contact us via: [info@novelaspects.com.au](mailto:info@novelaspects.com.au).

## SITUATIONS VACANT

**Join us at the Nature Parks**  
The Nature Parks is an inspiring workplace and, as the largest employer on Phillip Island offers a range of career opportunities. Our people are enthusiastic, committed, and professional in what they do.  
**Duty Manager — Part time**  
As the Duty Manager, you will oversee the nightly operations at the Penguin Parade. If you're a natural leader, can think on your feet and want to take on this diverse role, apply now to help guide our Penguin Parade to success night after night!  
**Visitor Experience Officers — Part Time – Fixed Term Contract (6 months)**  
We have multiple opportunities in our Tourism team to work at one of our 4 eco – tourism attractions over the peak period. If you have a passion for wildlife and conservation and thrive on providing exceptional, genuine, and inspiring experiences through outstanding customer service to every visitor of Nature Parks, we want to hear from you.  
For more information, please visit:  
[www.penguins.org.au/about/work-with-us/employment/our-people-our-work/](http://www.penguins.org.au/about/work-with-us/employment/our-people-our-work/)  
**Phillip Island NATURE PARKS**  
[penguins.org.au](http://penguins.org.au)



**COWES ISLAND VINTAGE**  
217 Settlement Rd, Cowes VIC 3922  
Phone: (03) 5952 2432 or 0425 846 258  
[info.cowesislandvintage@gmail.com](mailto:info.cowesislandvintage@gmail.com)  
[cowesislandvintage.store](http://cowesislandvintage.store)



151 Thompson Ave, Cowes  
(03) 5952 2605  
[theislandmarketplace@gmail.com](mailto:theislandmarketplace@gmail.com)  
Open 7 days a week 10am – 4pm  
the island marketplace



Welcoming the new management team at Melaleuca Aged Care (from left): Mobin Jose, Kerry Scarlett, Helen Spyt and Dean Weston.

## New management for Melaleuca

### AGED CARE

Melaleuca Aged Care is going from strength to strength.

It's been a challenging few years in the aged care industry with increased compliance requirements putting strain on resources as well as the challenges of securing staff.

Melaleuca Aged Care, our local not-for-profit association, has risen to the challenge and continues to provide exceptional care to their much-loved residents.

Melaleuca has a well-deserved reputation in the local Phillip Island community as a place where your loved ones are treated with care and dignity as they live out their 'glory years'.

With their enthusiastic new management team of Kerry Scarlett – CEO, Helen Spyt – Facility Manager, Mobin Jose – Clinical Care Coordinator and Dean Weston – Finance Manager, they are looking forward to carrying on the legacy of the previous team and staff.

The new management team

brings a wealth of both leadership and clinical experience, with a shared passion for enhancing the lives of the residents.

As the community welcomes Kerry, Helen, Mobin and Dean, there is a sense of optimism and excitement about the future of Melaleuca Aged Care.

Together, they are poised to lead the facility into a new era of exceptional care and community spirit, ensuring that it remains a place where residents can truly thrive.



The Language and Literature team of six girls from BCC were awarded honours after delivering a presentation addressing the problems of sexism in modern culture at the Tournament of Minds state final.

## Honours at State Final for Bass Coast College

### EDUCATION

A team from Bass Coast College (BCC) was awarded honours in the state final of Tournament of Minds at Latrobe University this month.

The school-based competition runs across Australia, New Zealand and South East Asia and requires a team of up to seven students to produce a solution to an open ended problem.

After winning their regional final at Federation University, the Language and Literature team of six girls from BCC delivered a presentation addressing the problems of sexism in modern culture.

The team used poems of Robert Frost and Edward Lear to

creatively address the issue, with Dudley Campus Manager Nick Sibby saying the team should be very proud of their efforts.

"We're so pleased with how they approached the challenge as a young team," said Assistant College Principal Emma Harris.

BCC has a history of success in the Tournament of Minds competition, and entered teams in the Language Literature, Social Sciences and STEM categories at the regional final earlier this year.

The teams were required to address a number of criteria during the competition, and all team members made a meaningful contribution to their presentations, said Nick Sibby.

## Island birds caught playing with whales in Alaska

### WILDLIFE

The same migratory short-tailed shearwaters, commonly known as 'mutton birds', which breed on the island each summer have been spotted near Alaska playing with a pod of humpback whales.

Each year approximately 1.4 million short-tailed shearwaters arrive on Phillip Island in late September from the Aleutian Islands near Alaska.

Aleutian Island resident and wildlife lover, Erin Enlow, was in a boat on the Bering Sea with her dog Deckers when she spotted a flock of shearwaters, with several whales popping out above the water.

"We were coming back from fishing around the same area," Erin said, "and there they were with the whales. The whales and the shearwaters seem to always be together."

Erin has seen the shearwaters feeding and resting out at sea multiple times, and says seeing the migratory birds is always special.

"I just thought 'oh my god, this is amazing.' I just really appreciate the beauty in nature."

Each year the shearwaters, which have a life span up to 25 years, complete a 30,000km round migration to the Aleutian Islands, which begins when they leave Phillip Island in early April.



Aleutian Island resident and wildlife lover, Erin Enlow, was in a boat on the Bering Sea with her dog Deckers when she spotted this flock of shearwaters, and several whales popping up above the water. Photo: Erin Enlow.

Most birds complete this journey in less than four weeks.

The shearwaters spend nearly six months out at sea after leaving Australia, resting on the surface of the water when tired – as captured in Erin's photo.

Upon returning to Phillip Island, the birds begin renovating old burrows or building new

ones in preparation for their looming breeding season.

The island's shearwater colonies are found predominantly along the Summerland Peninsula, Cape Woolamai and the southern coastline of the island.

Each breeding pair lays one egg (late November), which hatch in January.



While this local musk duck displayed its fan tail, musk ducks can resemble platypus when their tail is down. Perhaps the musk duck solves the mystery of a Cowes platypus sighting? Photo: Katrina Lawrence.

## Is it a bird or a platypus?

### WILDLIFE

Social media was in a twitter this month when a local resident reported she was "100 per cent" certain she spotted a platypus at Seagrove ponds.

"It was just near the bridge Settlement Road side, in amongst the reeds, then swam off. Unfortunately I startled it with my torch," Linda wrote on Facebook.

"I could see its bill and tail. I wouldn't believe it if I didn't see it, and I did. It was about one metre from me."

Residents responded in disbelief.

"Yeah, nah," wrote Craig, "it was a water rat."

"Platypus live in clean flowing streams, not stormwater basins. It would not survive and they are not recorded here."

Heather said if it was "a platypus for real I hope it moves on", given the poor quality of the water.

Phillip Island Nature Parks conservation manager Jessica

McKelson confirmed there were no platypus on the island.

But, she added, there were musk ducks that could be mistaken for platypus.

"We see them at Swan Lake regularly and we also know they are over at Wonthaggi wetlands," Jessica said.

"If there is a 100 per cent confirmation and photo evidence of a platypus at Seagrove Estate, then we may need to alert wildlife authorities as there is no evidence of platypus being here, and environmental conditions cannot support platypus."

Musk ducks prefer wetlands, rarely fly, seldom emerge from the water and are awkward on land.

The Platypus Network said it was possible to confuse musk ducks with platypus as they produce "a platypus-like pattern of ripples when they dive" and a male musk duck will sometimes swim with his head and neck stretched out, "producing a very platypus-like outline".

# Mick Doohan to lead Homecoming ride

## MOTO GP

The calendars of eager MotoGP fans can be marked for Thursday October 17, as the Homecoming Ride presented by TAC returns to the iconic Phillip Island Circuit for its third year.

Motorsport legend Mick Doohan will be the star of the show this year, giving fans a rare opportunity to ride alongside the five-time 500cc World Champion, 30 years on since his first championship victory.

"I am really excited to be back down at Phillip Island for this year's MotoGP event in October and am especially looking forward to getting on the road with all of the fans for the Homecoming Ride," Doohan said.

"Phillip Island is such a great track and holds so many great memories for me, and it's the Australian fans that make this event one of a kind."

The journey begins in San Remo, where participants will gather and ride together as

one, before making their way to the Phillip Island Grand Prix Circuit. The group will then enjoy the unique experience of completing a lap and a half of the world-renowned circuit, a track where Doohan claimed victory three times in his stellar career.

The Homecoming Ride attracted over 400 riders in previous years, and has been popular with local residents who lined the road and cheered riders on as they embarked on their journey to the circuit.

Places are limited for this unique opportunity to ride alongside Mick Doohan in a convoy to the picturesque Phillip Island Circuit.

Find out more at [motogp.com.au/event/homecoming-ride](http://motogp.com.au/event/homecoming-ride)

TAC will once again have a presence at the Phillip Island Grand Prix Circuit, promoting road safety messaging to punters across the three-day event.

Tickets for the Australian Motorcycle Grand Prix 2024 are available at [motogp.com.au/tickets](http://motogp.com.au/tickets)



Phillip Island's Sian Adnam (left) came fourth in the O60 Women's Longboard event at Cabarita Beach last week.

# Midweek at San Remo

## BOWLS

Last week, 50 bowlers headed out to the San Remo Bowls Club for their weekly match of midweek bowls.

Pauline and John signed players in; Peter, Rob and Clair arranged teams.

Players were greeted by clear skies and sunshine, with winds straight from Antarctica, however players never yielded to the wind nor rain later in the day.

Last week's winners on 36 points: Dennis Talbot (S), Brenda Moloney (2), Phil Wright (3) and Jennie Curnock (L).

Runners up on 32 points: Derek Fenn (3), Mark Hanrahan (S), Marianne Scales (2) and Ann Graham (L).

Best one game winners on 18 points: Sue Stansfield (3), Sue Wright (2), Mick Sheers (S) and Shirley Corcoran (L).

The club give their thanks to John and Clair for their work both outside and in the kitchen, along with Mark and Mick behind the bar.

This week, the club will meet at the Loch and District Bowls Club. Arrive on site by 10am - if player cards are filled, late arrivals will not get a game.

# Longboard place for Sian

## SURFING

The Australian Longboard Titles have concluded with champions crowned across all Master divisions, bringing a thrilling end to the event at Cabarita Beach on the Tweed Coast of New South Wales.

Phillip Island surfer Sian Adnam took out fourth place in the O60 Women's category, behind

Kate Perry of Queensland and NSW's Anne Duncan and Andrea Bohm.

Sian was one of only five Victorians who made it through the finals across the 10 categories in the competition.

Victoria came third behind NSW and Queensland in the overall state championship.

Surfing Australia Contest Director Glen Elliott

hailed the competition as an outstanding success.

"It has been a superb week and a true celebration of Australian longboard surfing. The camaraderie and the strong Aussie spirit shared by longboarders from across the country have been on full display," Elliott said.

Full results: [australian-surfchampionships.com/longboard](http://australian-surfchampionships.com/longboard).

# Club kicks off season with exciting competition

## ANGLING

The Rhyll-Phillip Island Angling Club (RPIAC) launched its 2024/25 angling season with a thrilling weekend-long competition, held from midnight on Friday September 20, through to Sunday September 22.

Despite the windy and cloudy weather, the event saw enthusiastic participation from anglers of all ages.

The thought of early spring catches and the lure of snapper season continues to both motivate and frustrate keen anglers.

Over the weekend a total of 20 fish were weighed in, including snapper, King George whiting, flat-head, trevally and a shark.

There are 12 weekend competitions this season and all RPIAC members are eligible to participate.

All junior anglers who participate receive complementary membership to RPIAC, allowing them

to compete for prizes and the club championships in the Squidgie (anglers aged nine or younger) and Junior (anglers aged 10 to 16) categories.

The RPIAC also hosted an Open Day on Sunday, featuring a fishing car boot sale to raise funds for Junior and Squidgie anglers, along with a sausage sizzle sponsored by Bakers Delight Cowes.

The event was well attended, adding a lively social aspect to the competition weekend.

In the Squidgies Mixed Bag Points Competition, brothers Byron and Harley Griffin (reigning RPIAC Squidgie Club Champions) tied for first place.

Each brother caught one fish worth 20 points, showcasing their budding angling skills.

The Junior Weight Competition was won by Zachary Gomm with an impressive snapper weighing 2155 grams.

Meanwhile, Denver



Michael Stefanakis opened the 2024/25 competition with a 5885 gram snapper to win the Senior Male Heaviest Weight competition.

Firth, the reigning RPIAC Junior Club Champion, secured the Junior Points Competition with a flat-head worth 591 points (295 grams).

In the Senior Male Heaviest Weight Competition, Michael Stefanakis emerged victorious with a snapper weighing 5885 grams.

Carriane Peatey won the Senior Female Heaviest Weight Competition with a snapper weighing 2305 grams.

Michael Smart claimed the Senior Male Points Competition with a King George whiting worth 1582 points (565 grams), while Kate Jinnette won the Senior Female Points

Competition with a King George whiting worth 1288 points (460 grams).

Alex Bowden took home the prize in the Shark Competition with a gummy shark weighing 2625 grams.

The Game Fish and Squid/Cuttlefish Competitions were uncontested this time around.

The Secret Weight Prize was awarded to Trevor Gleeson for a trevally weighing 705 grams, with the secret weight being 1495 grams.

After the presentations, anglers and supporters were treated to a meal of pizza and salads. A special thanks to everyone who helped out on the day.

None of the RPIAC Extraordinary Catch Incentives were claimed and the members-only competition weekend, \$1000 first-to-catch prizes for senior competitors stay banked.

The incentives up for

grabs are for eligible species that equal or exceed the nominated weight and include King George whiting (1000 grams), snapper (10 kgs), gummy shark (20 kgs), Mulloway (25 kgs) and Kingfish (25 kgs).

This season also marks the introduction of a brag mat/catch and release system for snapper, allowing anglers to enter snapper in the competition with photographs of their catch, which they prefer to release.

The RPIAC clubrooms are open on Friday nights from 5pm, providing a great opportunity for members to gather and share their fishing stories.

The RPIAC's first competition of the season was a resounding success, setting a positive tone for the upcoming angling events. Congratulations to all the winners and participants.

For more information about RPIAC and events visit [www.rpiac.com](http://www.rpiac.com).

# TIDE GUIDE

Tidal predictions for Stony Point, Cowes -0.09 Newhaven -0.31 HIGH TIDE IS MARKED IN BLACK

WED 25 SEP	THU 26 SEP	FRI 27 SEP	SAT 28 SEP	SUN 29 SEP	MON 30 SEP	TUE 1 OCT
HIGH 6:12 am 3.08 m	HIGH 6:56 am 2.92 m	LOW 12:31 am 0.47 m	LOW 1:15 am 0.66 m	LOW 2:06 am 0.85 m	LOW 3:10 am 1.01 m	LOW 4:30 am 1.09 m
LOW 11:39 am 0.92 m	LOW 12:22 pm 1.02 m	HIGH 7:41 am 2.75 m	HIGH 8:28 am 2.59 m	HIGH 9:21 am 2.47 m	HIGH 10:24 am 2.40 m	HIGH 11:30 am 2.40 m
HIGH 5:45 pm 2.79 m	HIGH 6:25 pm 2.67 m	LOW 1:04 pm 1.13 m	LOW 1:51 pm 1.23 m	LOW 2:50 pm 1.31 m	LOW 4:04 pm 1.32 m	LOW 5:20 pm 1.24 m
LOW 11:49 pm 0.30 m		HIGH 7:09 pm 2.53 m	HIGH 8:00 pm 2.38 m	HIGH 9:06 pm 2.26 m	HIGH 10:31 pm 2.22 m	HIGH 11:55 pm 2.30 m

All material is supplied in good faith and is believed to be correct. No responsibility or liability for errors or omissions is accepted.

PHILLIP ISLAND MARINE

NEW & USED BOAT SALES  
14 Beach Road, Rhyll  
OPEN 7 DAYS  
**PH: 5956 9238**  
[www.phillipislandmarine.com.au](http://www.phillipislandmarine.com.au)



## Regional best

Congratulations to Charlie Fischer in the Boys Division 1 and Gisele Smith in the Girls U15 V/line both selected and heading off to Ballarat to represent Gippsland in the V/line Football Cup. The V/line Cup is the annual representative carnival for the best under 15 boys and girls footballers from regional Victoria.

## Can collection raises \$3040

### FOOTBALL

Jess Gislingham has worked hard for the Phillip Island Football Netball Club all year, collecting and selling recycled cans and bottles at home games as a fundraiser.

Working in conjunction with the Container Deposit Scheme (CDS) run by Will Hams and Lucas Webb at Harvey Drive in Cowes, he has raised vital funds for the club with his highly successful venture.

Jess was easy to spot at the footy ground all through the footy season, thanks to Steve Price at CC Signs, who created some great "Can-Man" signage used on his vehicle.

Jess wants to thank all the football and netball supporters that helped him at each game, by placing cans in the right bins; and for bringing along cans from home as well



Jess hard at work on a Sunday at Can Collect after a busy footy game collection.

for the fundraiser.

He has also thanked footy players Brady Ross, Kohen Beaumont and Charlie O'Garey for their help and fun times at the Can Deposit Centre where

they work.

Jess is very keen to continue the Can-Man collection for the community and to keep his hometown clean while protecting the environment.

## Euchre results

Ladies' winner: Caroline Smith with six wins.  
Men's winner: Tony Fallon with seven wins.

Encouragement award: Russell Wicking.  
The club is pleased to see some new faces, as

well as some long-lost ones. A happy birthday to Mary.

New players are most welcome, for further information contact Bob Hee on 0418 173 388.

# Riding to success

### HORSERIDING

Gabe and Gisele Smith have returned from Europe after representing Australia at the Mounted Games Championships.

The pair hired ponies in France and Italy to compete, with their mother Natasha saying "finding a good match is the challenge" for Australian riders.

However Gabe rose to the challenge and broke new ground for the Australian team.

He wrapped up the competition with a 7th in the World Teams, 13th in the World Individual and 3rd in the World Pairs championships.

"An Australian has never before qualified to ride in the A final, let alone score a podium finish. Gabe was the first," explained Natasha.

In the pairs, Gabe was partnered with Bella O'Hara, the current European Under 18 Champion.

Sister Gisele came 18th in the World Individual and 14th in the World Pairs championships.



Gabe and Gisele Smith, with Ember Vanderydyt of Mirboo North and their coach Rohan Smith.

"Gisele's pair broke her leg during a dismount at World Individuals so another Australian rider, Ember Vanderydyt of Mirboo North flew over to pair with her," said Natasha.

"It was such an amazing experience. They enjoyed riding other horses and learning from some

of the world's best. Making finals and representing their country was such a privilege."

Natasha said the pair made lifelong friendships and memories on the trip and thanked all the locals who supported Gabe and Gisele to follow their dream to compete overseas.

## Spring Triples Carnival at bowls club

### BOWLS

The Phillip Island Bowling Club hosted the Spring Triples Carnival on Thursday, September 19 and Friday, September 20.

Both greens were full and bowlers from across the state flocked to compete in this prestigious event.

The Spring Carnival is proudly sponsored by Lifestyle Communities, who were on hand to present first, second, third and best last game prizes.

### Results

Day one - best last game: Alan Price, Mike Shingles and Norm Waters.

Day two - best last game: John Newcombe, Peter Nichols and John Crewdson.



Congratulations to Spring Carnival winners: Glen Bainbridge, Chris Fox and Terry McRedmand.

### Spring Carnival

Third: Keith Fox, John Pentreath and Craig Moore.

Second: Ronnie Dalton, Craig Bryant and Mark Little.

First: Glen Bainbridge, Chris Fox and Terry McRedmand. The Phil-

lip Island Bowling Club would like to thank Lifestyle Communities for their continued support.

For Red Rocks golf and Phillip Island bridge go to [pisra.com.au/sport](http://pisra.com.au/sport)

EXPRESSION  
OF INTEREST



2025 COACHING POSITIONS PHILLIP ISLAND

**BULLDOGS**

Applications  
CLOSE  
5th October 2024  
5pm

<https://form.jotform.com/PIFNC/2025netballcoach>

Enquiries - [netball@pifnc.com.au](mailto:netball@pifnc.com.au)

- 11 & Under
- 13 & Under
- 15 & Under
- 17 & Under
- D Grade
- C Grade
- B Grade
- A Grade

EXPRESSION  
OF INTEREST



2025 COACHING POSITIONS PHILLIP ISLAND

**BULLDOGS**

APPLICATIONS CLOSE

5pm, 30th September 2024

Enquiries: [footy@pifnc.com.au](mailto:footy@pifnc.com.au)

<https://form.jotform.com/PIFNC/2025footballcoach>

- Under 16's
- Under 18's
- Reserves
- Senior Assistant Coaches

# PIFNC PRESENTATION NIGHT



# Phillip Island Football Netball presentation evening



A Grade netball awards: Carly O'Brien - Coach, Lily Mewett - Runner up Best and Fairest, Ella Duggan - Best and Fairest, Charli Ross - Coaches award, Jaclyn Clark - Captain, Cath Huther - Assistant coach and Nazza O'Brien - Netball operations manager.



Seniors football awards: Damien Holmes - 300 games, Max Walton - Impact player, Scott Huther - runner, Jack Taylor - Most Determined, Charlie Bruce - Runner up best and Fairest, Cam Pedersen - Coach, Jaymie Youle - Best in finals, Mark Griffin - Team player, Hayden Bruce - Best and Fairest, and Daniel Larsson - Assistant coach.



Reserves football awards: Ethan Michaelides - Team Player, Thomas Niven - Runner up Best and Fairest, Thomas Macrokanis - Best and Fairest, Tyce Kleverkamp - Most Determined, Nick Anderson - Runner up Best and Fairest and Best in finals, and Jay Ladson - Impact Player (absent).



B Grade awards: Anna Mewett - Coach, Isla Cousins - Best in Finals, Maddy Taylor - Best and Fairest, Amber White - Team Manager, Jess Gysberts - Runner up Best and Fairest and the Coaches award (absent).



C Grade netball awards: Ruby Anderson - Coaches award, Steph Krainer - Best and Fairest, Ahlee Penry - Runner up Best and Fairest.



U18 football awards: Back row: Noah Forrest-Mabilia - Impact Player, Jack Huther - Runner up Best and Fairest, Oliver Duggan - Best and Fairest. Front row: Charlie O'Garey - Runner up Best and Fairest, Leo Sevona - Team Player, Darcy Thompson - Best in Finals, Noah Williams - Keith Deloaze award and Tim Niven - Most Determined.



D Grade netball awards: Alicia Prentice - Runner up Best and Fairest, Meg Oudshoorn - Coach, Sienna Trew - Coaches award and Abby Morgan - Best and Fairest (absent).



Veterans football awards: Back row: Leigh Woodford - Best in Finals, Matthew Innes - Team Player, Joel Goodall - Coach. Front row: Nathan Hollings - Most Determined, Aaron Ransom - Impact Player, Geoff Odgers - Best and Fairest, Robert Linford - Runner up Best and Fairest (absent).



U16 football awards: Lachlan Eastwood and Archie Ross - Runners up Best and Fairest, Cade Wragg - Keith Deloaze award, Harrison Carlon - Best and Fairest, Tommy Newman - Team Player, Best in Finals - Dean Rizzo, Charlie Fischer - Impact Player (absent) and Xavier Williams - Most Determined (absent).

# PIFNC PRESENTATION NIGHT



U15 netball awards: Aisha Hibbert - Best and Fairest, Matilda Trew - Runner up Best and Fairest and Best in Finals and Isla Humphries - Coaches award (absent).



Under 13 netball awards: Macey Piera - Runner up Best and Fairest, Kate McCausland - Best and Fairest and Piper Nicolaci - Coaches award.



Under 13 LDNA Blue netball awards Ruby Pedersen - Runner up Best and Fairest, India Donohue - Coaches award and Paige Humphry - Best and Fairest (absent).



Under 11 netball awards: Marley Hecker - Best and Fairest and Best in Finals, April Fraser - Coaches award and Olive Callis - Runner up Best and Fairest.



Under 13 LDNA Red: Sophia Hardy - Coaches award, Alicia Summers - Best in Finals, Madison King - Best and Fairest and Alexis Osabutey - Runner up Best and Fairest.



Frankie O'Brien - Awarded the Margaret McFee award for being the most dedicated Junior Club person, Jodie Ross proudly presented the award to Frankie.



Under 13 LDNA White: Ruby Woodrup - Runner up Best and Fairest, Willow Zamfirescu - Equal Best and Fairest, Ellie Hughes - Coaches award, Evie Hollings - Equal Best and Fairest and Alana Inness - Best in Finals.



U17 netball awards: Carly O'Brien - Assistant Coach, Abby Papas - Coaches award, Maya Huther - Best and Fairest, Nazza Obrien - Netball operations manager, Meika White - Runner up Best and Fairest and Best in finals (absent).



Chris Ross presented Shane and Jess Gislingham with the Best Club Person for their amazing efforts around the club and especially for raising \$3040 by the Can Man, donating it all to PIFNC. Read more on this story on page 29. Not pictured - James Patton was presented the Don Hamilton award by Don's sister Carol, for being the Best Junior Club person and the President's award 2024 to Andrew McMillan (absent).



Kelly Wall of the Island's Senior Women's celebrates her goal during Phillip Island's premiership win against Leongatha.

# Great end to the Gippsland Soccer League 2024 season

## SOCCER

The Gippsland Soccer League (GSL) Grand Final was held on Sunday, September 22, at Bellbird Park in Drouin.

The Drouin Dragons showcased their new facilities, with a revitalised main pitch and brand-new clubrooms. The weather held off for more than 900 supporters who gathered to watched the competition.

With three pitches in action throughout the day, seven of the nine GSL clubs had teams competing for the final's trophies.

### Senior Women's

In the Senior Women's, Leongatha Knights and the Phillip Island Breakers took to the pitch in high spirits.

The women always have a friendly rivalry, with both teams capable of taking the win.

Leongatha scored an early goal eight minutes in, off the boot of Amaya Sande.

Phillip Island kept up the pressure and Captain Kelly Wall equalised the score halfway through the first half.

Young gun, Tiki Reed from Phillip Island snuck a goal in toward the end of the first half, with Phillip Island up 2-1 at the break.

The second half was very even with both teams scoring a goal each and Phillip Island taking home the cup after a

3-2 win.

The Most Valuable Player of the match was Kelly Wall of the Phillip Island Breakers.

### Senior Men's

The Senior Men took the pitch at 4pm with the Phillip Island Breakers playing the Drouin Dragons.

Drouin lay down the challenge early on with two goals in the first 10 minutes.

Phillip Island regrouped and Ben Taylor scored their first goal halfway in the first half, but they remained one goal short going into the break with Drouin in the lead 3-2.

Both teams found the net in the second half, but Drouin claimed the cup with the final result Drouin 4, Phillip Island 3.

The Most Valuable Player of the match was Aaron Patchett of Drouin Dragons.

### U12A Mixed

The Under 12A Mixed match was between the Phillip Island Penguins and Drouin Dragons Maroon.

Drouin hit the ground running and issued the challenge to Phillip Island by scoring three goals in the first half.

Phillip Island coach Liam Jury rallied his players and told them they could win the second half.

His players answered the call and scored four goals in the second half, while Drouin



Spectators line the pitch.

managed another three goals.

In the end, Drouin took the win with a 6-4 final score.

The Most Valuable Player of the match was Jimmy Joyce-Bliss of Drouin Dragons.

### Grand Final results – Sunday, September 22

**Senior Men's:** Drouin Dragons Maroon 4 def Phillip Island Breakers 3.

**Senior Women's:** Phillip Island Breakers 3 def Leongatha Knights 2.

**Men's Reserves:** Drouin Dragons Maroon 2 def Trafalgar Victory 1.

**U17 Mixed:** Drouin Dragons Maroon 2 def Drouin Dragons Maroon Yellow 1.

**U14 Mixed:** Leongatha Knights 2 def Korumburra City 1.

**U13 Girls:** Korumburra City 1

def Wonthaggi United 0.

**U12A Mixed:** Drouin Dragons Maroon 6 def Phillip Island Penguins 4.

**U12B Mixed:** Inverloch Stars 5 def Drouin Dragons Yellow 0.

All three Senior matches were live streamed, with over 1000 views throughout the day.

GSL thank the Drouin Dragons for hosting the Grand Final, Valley Trophy Centre for their sponsorship and supplying all the trophies and medals, MDR Digital Images for the live stream and photography.

Local sport does not happen without volunteers and the hours they contribute. To all the players, supporters, volunteers and referees, thank you and we look forward to seeing you next season.

ALEX SCOTT AND STAFF

23 PEMBREY LOOP, COWES



- Situated on a corner allotment across from reserve, with side gate for extra access for boat /caravan storage
  - Light filled open plan living area leading onto a spacious balcony – perfect for relaxing or entertaining
  - 4 bedrooms/2 bathrooms/2 cars
- \$760,000 TO \$800,000**

7 THE BROADWAY, SAN REMO



- Nestled in a quiet court with breathtaking views of the water and Phillip Island Bridge
  - Large open plan living upstairs leading onto huge undercover deck with amazing views
  - 3 bedrooms/2 bathrooms/1 car
- \$1,075,000**

13 SANCTUARY DRIVE, COWES



**PERMANENT RENTALS URGENTLY NEEDED NOW!**

**CALL US TODAY FOR A FREE RENTAL APPRAISAL.**

113a Thompson Ave, Cowes  
www.alexscott.com.au

**5952 2633**

HOME DELIVERY  
Call your local newsagency

ISSN 2200-100X



PHILLIP ISLAND & SAN REMO

**ADVERTISER**