

PHILLIP ISLAND & SAN REMO

# ADVERTISER

Your Community Voice!

Wednesday, January 25, 2023

\$1.60 Incl. GST



## Festival of Surfing underway

The Festival of Surfing kicked off on the weekend with the National Surfing Reserve's 10th Anniversary Surfing Teams Challenge, where 11 teams and 99 competitors battled it out for the Dave Fincher Memorial Trophy. The event was the first in the Phillip Island Boardriders' month-long festival, which celebrates 60 years of the club as well as the surfing culture and community of Phillip Island. Photo: Peter Fogarty.

## Waves roll for 10 years of island surfing spirit

Perfect waves and weather set the scene for a magic day of surfing and community spirit on Saturday January 21.

The Crushers captained by Nick Fostin won the Phillip Island National Surfing Reserve Teams Memorial Trophy at a super successful event held at Cape Woolamai.

Cape Woolamai provided the spectacular backdrop for an epic day made all the more special because the comp was celebrating 10 years since the Reserve was declared in 2013.

The day began with a moving

Welcome to Country and smoking Ceremony by Steve Ulula Parker – a founding member of the surfing reserve working group.

“There was just a hush – all you could hear were waves breaking. There was so much respect and everyone acknowledged what an important aspect of the reserve the connection to the Traditional Owners is – it means everything,” reflected Danielle Bayliss who also entertained the crowd with commentary on the beach across the day.

As surfers ran through the smoke and onto the beach, Steve

wished everyone a great and safe day on Millowl (Phillip Island) and its waters.

The eleven teams displayed an incredible array of surfing styles and moves. Surfers ranged in age from seven to over seventy and all showed courage, skill and the amazing teamwork the comp format calls for.

The surfers were stoked to be able to take over the best bank on Woolamai with a perfect, peeling, three to four foot right hander and a light east nor'-east breeze.

First up, the gutsy grommets (the youngest was seven) paddled out –

some with their dads alongside to encourage and push them onto a wave. From the beach, the judges noted this gesture summed up what the comp and Surfing Reserve are all about – family and encouraging the next generation of surfers.

Keen supporters made the trek down the beach to set up camp, catch up with friends, and enjoy the displays of skill, determination and sometimes comedy.

Team spirit was tangible as surfers displayed signs of support and even team t-shirts specially designed for the day.

*Continued page 10*

**Back to school**

Page 12-13

**Holiday Guide**

Page 16-19

**Island Home**

REAL ESTATE GUIDE

Page 21-27

**COWESBOAT**  
CARAVANRVSTORAGE

FULLY SECURED - FULL SURVEILLANCE

Ray White Phillip Island  
56-58 Thompson Avenue, Cowes  
5952 2799

**COWES**  
**SELF**  
**STORAGE**

24 hr Video Surveillance

Discover whats new in the showroom








south coast furnishings FLOORING XTRA

South Coast Furnishings & Flooring Xtra

155 Thompson Avenue  
Cowes VIC 392  
(03) 5952 1488  
southcoastfurnishings.com.au

# PHILLIP ISLAND

7 day weather forecast

Wed/Jan25	Thu/Jan26	Fri/Jan27	Sat/Jan28	Sun/Jan29	Mon/Jan30	Tue/Jan31
 PARTLY CLOUDY	 PARTLY CLOUDY	 SUNNY	 PARTLY CLOUDY	 CLOUDY	 CLOUDY	 CLOUDY
17 25	17 23	15 25	18 32	22 27	16 20	16 20

## Koala numbers continued decline

The vexed question of Phillip Island's declining koala population gained traction on social media last week.

"What is the koala situation outside the nature reserves here on the island?" Sean asked on Facebook.

"Forty years ago at the family holiday house, my wife would hand feed the koalas as an eight year old here at Smiths Beach in the back yard."

Several residents responded that koalas were not native to the island, but others mourned the loss of the species.

KJ said 20 years ago they were outside their home.

"Unfortunately the properties beside us were sold and knocked down and now have multiple units and all trees have been chopped down," KJ commented.

Noel agreed, saying "numbers have certainly declined; when you look at the loss of trees, I'm not surprised".

And Katie said "we need to protect their environment and in turn protect our environment".

This month, Phillip Island Nature Parks confirmed there were 17 koalas in the Koala Conservation Reserve, compared to 24 in 2019.

There were less than 30 estimated around the island in 2019, and now that estimate has dropped to about 10.

In 2020 PINP dismissed calls to include koalas in its proposed threatened species plan, despite the much-loved marsupial under serious threat in the wild.

Nature Parks is currently focused on the creation of an "Island Ark" through its Threatened Species Plan: the reintroduction



The island's wild koala population is estimated to be about 10, but PINP has ruled out stepping up efforts to increase wild or captive koala numbers, saying there are very limited opportunities for koalas to be released on Phillip Island.

of endangered animals and plants, such as eastern barred bandicoots.

Despite this, PINP CEO Catherine Basterfield ruled out stepping up efforts to increase wild or captive koala numbers, saying they were an introduced species to Phillip Island.

"Koala numbers on Phillip Island are dwindling through a combination of disease, habitat loss and urbanisation," Ms Basterfield said.

"There are very limited opportunities for koalas to be released on Phillip Island as we

do not have the range of tree species to support a viable population, and we also have a diseased (chlamydia positive) wild population that would compromise koalas being re-located.

"This is why the Nature Parks has not identified koalas in the Threatened Species Plan as an appropriate species to re-establish in the wild on Phillip Island."

Koalas are listed as threatened in other states through loss of habitat, road kill and dog attack.



This bubble thing is a swim bladder from a puffer fish.

## All puffed up

In our continuing series of strange things found washed up on beaches comes this strange puffy thing.

In fact, it's a puffer fish swim bladder, more specifically the swim bladder of the porcupinefish and it's about the size of an adult's palm.

Marine biologist and author Dr Julian Pepperell said the swim bladders have been known to wash up on east coast beaches, but he had only heard of about six in the past 10 years.

The organ, found in most bony fish, resembles a bag of air which inflates and deflates to give the fish natural buoyancy in all depths of water.

"They're using this gas-filled bladder inside their body and they're secreting gas into it or absorbing gas out of it as they move up and down in the water," Dr Pepperell said.

The swim bladder of most fish generally break down and decay quite quickly after the fish has died.

But that's where the porcupinefish differs to other fish species.

Its swim bladder, with a leathery-like exterior, is resistant to decomposition.

Aside from the organ's buoyancy function, Dr Pepperell said the swim bladder was also used as a mating tool in some species such as the jewfish/mulloway family.

"Muscles are used to vibrate the swim bladder thereby producing a thrumming sound, which explains why these fish are dubbed 'drums' and 'croakers,'" he said.

Dr Pepperell said when dried, the swim bladder was processed into a powdered, collagen-like material called isinglass, which is put into beer and wine.

### PHILLIP ISLAND & SAN REMO ADVERTISER

#### CONTACT US:

Editorial: [advertiser@pisra.com.au](mailto:advertiser@pisra.com.au)

Advertising: [ads@pisra.com.au](mailto:ads@pisra.com.au)

Sport: [sport@pisra.com.au](mailto:sport@pisra.com.au)

Classifieds: [ads@pisra.com.au](mailto:ads@pisra.com.au)

Suite 2, 60 Chapel Street, Cowes, 3922.

Phone (03) 5952 3201

Fax (03) 5952 3024



Publication No. VBF 9005897

Registered by Australia Post.

Subscribe online  
[www.pisra.com.au](http://www.pisra.com.au)

## WATERPROOF UNDER YOUR DECK

and turn the area into useable space all year round



**UNDERDECK**

Call 0417 591 113 for your local distributor  
E: [huntersales@netspace.net.au](mailto:huntersales@netspace.net.au)  
[www.underdeck.com.au](http://www.underdeck.com.au)



## CARING FOR SAM'S CHILDREN

Please support the fundraiser for Sam Fraser's children, to help cover the cost of their care and education.

To donate, go to [gofund.me/b6e777cb](https://gofund.me/b6e777cb), or search [gofundme.com](https://gofundme.com) for "Caring for Sams Children".

## 12 MONTH ONLINE SUBSCRIPTION OFFER

# Only \$1.35 a week!

# Plus

a free copy of **OVER THE BRIDGE** valued at \$44.95 RRP

Read the weekly paper and have access to all past editions. Unlimited access to breaking news, the latest local news, sport, special features, Island Magazine and more!



Scan to subscribe or go to: [www.pisra.com.au/subscriptions](http://www.pisra.com.au/subscriptions) or for help signing up call us on: **5952 3201**



**YOUR FREE GIFT!**

PHILLIP ISLAND & SAN REMO  
**ADVERTISER**



In an Australian first, PINP launched a high-tech sailing drone to research Little Penguin foraging in the waters around the island. From left: PINP CEO Catherine Basterfield, Professor Jonas Hentati-Sundberg – Swedish University of Agricultural Science, Bass Coast Mayor Cr Michael Whelan, Penguin Foundation Director Jeni Jobe, Kevin Love – Nature Parks Board Chair, French Ambassador Thebault, Member for Bass Jordan Crugnale and PINP Marine Scientist Andre Chiaradia.



Phillip Island Nature Parks' Marine Scientist Associate Professor Andre Chiaradia gets ready to launch the sailing drone from the jetty at Newhaven.

# Australia's first penguin research drone launched

In a change from the usual summer jetty jumping, on Friday it was an Australian-first project making a splash from the Newhaven jetty.

Australia's first sailing drone used to research penguin habitat was launched from Newhaven, part of a joint project between Australia, Sweden and France.

Researchers at Phillip Island Nature Parks will now have a clear picture of the underwater world of the Little Penguin, using a new, high-tech, sailing drone on loan from the French National Centre for Scientific Research (CNRS).

The drone will help map the penguin foraging grounds for the first time and survey the waters off Phillip Island, collecting vital information on water temperature, fish abundance and salinity.

It sends sound to the bottom of the ocean, and the echo is translated into images, which will be used by scientists in future research.

The two-metre-long sailing drone, acquired by the lead scientist of the project, Dr Claire Saraux from CNRS, is the result of a partnership between Phillip Island Nature Parks, CNRS, the Swedish University of Agricultural Sciences and the Penguin Foundation.

Officially called a USV (unmanned sailing vessel), to the untrained eye, it might look like a toy remote control sailing boat, but there is a huge amount of technology packed into its small frame.

With a carbon fibre sail, the boat is powered by solar panels and includes satellite transmitters, a fish finder sensor and other sensors that record salinity levels, water temperature, oxygen and chlorophyll levels.

Its echo-sounder gives a live picture of what predators and prey lie under the water.

All the information is stored in a microcomputer and then beamed



After being tossed off the jetty, the sailing drone was towed out into clear water between San Remo and Newhaven.

back to the research team.

Like any sailing ship, the drone moves with the wind, with researchers able to remotely control the little ship's rudder.

They are also able to send via satellite, commands about navigation and data collection.

Phillip Island Nature Parks' Marine Scientist Associate Professor Andre Chiaradia said information collected by the sailing drone will be an invaluable asset for penguin research now and future studies into the health of the marine environment around Phillip Island.

"There is a need to improve our knowledge of penguins and other marine species. The sailing drone will give us crucial information for marine spatial planning and conservation," he said.

"This is an exciting project for us. It's technology we haven't had access to before, and it will change how we manage research and conservation projects for our penguin population.

"We do not have accurate information on prey composition and

availability in the marine systems because direct prey data collection is difficult and expensive, usually requiring research vessels with the prohibitive cost of shipping time."

Andre said the research drone takes the longstanding collaboration between the Nature Parks and French scientists to a new level.

It will also help secure a future for the penguins, "and saving the penguins, we may save ourselves in the process," he said.

Dr Claire Saraux from the French National Centre for Scientific Research is the principal investigator in the sailing drone project.

"The drone will autonomously collect data during several breeding seasons, giving us insights on environmental variability over time and crucial information to help us manage the food supply of little penguins in the future," she said.

Associate Professor Jonas Hentati-Sundberg from the Swedish University of Agricultural Sciences is a partner on the project.

"By using green energy, the sailing

drone will survey, for the first time, the foraging areas of Little Penguins on Phillip Island. The drone is equipped with several high-resolution environmental sensors and will collect data on water temperature, salinity, and chlorophyll," he said.

French PhD student Lilia Guillet will operate the drone as part of her studies.

"Not only will we see the different types of fish under the water, we will also see the quantity of fish. This can help scientists to know what food is available in the foraging zone of Little Penguins," Ms Guillet said.

The sailing drone will collect data and information for three years.

## Launch

The sailing drone launch at the Newhaven jetty last Friday (January 20) attracted a crowd of dignitaries, who were welcomed by Nature Parks CEO Catherine Basterfield.

Guests included French Ambassador Thebault, Member for Bass Jordan Crugnale, Bass Coast Mayor Cr Michael Whelan, Nature Parks

Chair Kevin Love and Jane Jobe, Director of the Penguin Foundation as well as representatives from Phillip Island Nature Parks, Woolamai Beach Surf Life Saving Club, Bass Coast Shire Council and Department of Environment Energy and Climate Action.

The event kicked off with a Welcome to Country and smoking ceremony by the Bunurong Land Council.

Ms Basterfield said the project was about learning more about the waters of Phillip Island "so that humanity can do a better job of looking after it ... and we have much to learn."

She said the project was made possible by the French government and is being lead by their National Centre for Scientific Research in collaboration with Nature Parks, Swedish University of Agriculture and the Penguin Foundation.

Members of the research team and Ambassador Thebault spoke about the project and the long history of collaboration between France and Australia.

Professor Jonas Hentati-Sundberg from the Swedish University of Agricultural Science explained the finer points of the sailing drone, including how it was designed to survive collisions with ships, while Nature Parks Marine Scientist Dr Andre Chiaradia explained how the data from the small ship would expand researchers' knowledge of the Little Penguins.

After the formalities, the little ship was wheeled down to the end of the jetty, where it was literally, but carefully, tossed into the ocean.

It was towed out to the waters of Western Port Bay where it sailed solo off the shore of Newhaven in front of the delighted crowd of on-lookers, before being picked up and ferried back to shore.

More photos at [pisra.com.au](http://pisra.com.au)



Dianna Bannister – Bass Coast Shire Council, Michaela Salvato – PINP Board, and Member for Bass Jordan Crugnale at the launch of the new sailing drone, a joint project between Australia, France and Sweden, which will map penguin foraging grounds.



French Ambassador Thebault, Nature Parks CEO Catherine Basterfield and President of the Woolamai Beach Surf Life Saving Club Jason Close watched from the jetty at the launch of the sailing drone.



Chair of the Nature Parks Board Kevin Love, with Bass Coast Mayor, Cr Michael Whelan at the Newhaven jetty to witness the launch of the new sailing research drone.



PICAL manager Greg Thompson in their new home, ahead of a community open day on February 11.



Food pantry volunteers from left Barbara Burns and Nerida Stubbles.



PICAL hosts many community groups in the new meeting rooms including local embroiderers.

# PICAL's big reveal

After years of planning, Phillip Island Community and Learning Centre staff have finally settled into their new Warley Avenue headquarters, now organising an open day on February 11.

However, while PICAL's new home is complete – with final Wi-Fi expected to be switched on this week – the community garden and Boomerang Bags' new home at the Blue Gum Reserve is just getting started, hoping to be finished by March.

PICAL manager Greg Thompson last week took the Advertiser on a tour of the new \$1.95 million building at 16 Warley Avenue, which has been in planning since 2019.

Greg said moving on December 10 from their previous 880sqm building – where PICAL had been based for 40 years – to the new 440sqm home, required considerable downsizing, with a garage sale raising \$2000.

"We still had five truckloads to move," he said.

"But this building is by far a better design and much more efficient than our Church Street offices, where timber decks were rotting

and doors would stick or not close." Greg said everything from the lighting to the technology, heating, cooling and security was state-of-the-art.

In the public reception area there are computers available to the community, Centrelink office and the food pantry.

The food pantry, the biggest in South Gippsland, which operates five days a week, now has all food and storage in one place rather than being spread across buildings.

Rear offices are all behind security.

"There are times we encounter distressed and volatile people so there is security to access offices and there are separate exits to each room."

PICAL's 20 staff now have access to offices, accessible toilets, and classrooms that have large screen TVs, new computers, and divider screens that can be pulled back to make one large room.

A commercial kitchen – which can be rented out to local businesses or used to teach hospitality courses – includes two new stainless-steel fridges supplied by the shire, as well

as a six-stove oven.

A new commercial coffee machine will train baristas.

PICAL even has a rear deck with barbecue and views across Western Port, which will be blocked once a new 90-apartment, five-storey building is built two doors down.

## Services

Greg said all services continued as usual, with term one courses set to start on February 6 and the term one program released to the community this week.

The exception is the community garden and Boomerang Bags.

Five days a week the Centrelink office works, as well as the food pantry and free public computers.

On Mondays there is the Justice of the Peace witnessing service, as well as job service groups.

The Cowes Myli library service operates Tuesday, Wednesday and Thursday from 9.30am-2pm.

Several community groups use the meeting rooms including embroidery, mahjong and wool spinning.

Greg said in the future he hopes to secure the Royal Flying Doctor Service and Narcotics Anonymous.

Services will be on display at the PICAL open day on Saturday February 11, 10am-1pm, as well as a sausage sizzle, food caravan, gardening tips and adult learning IT help desk.

## Blue Gum Reserve

Bass Coast Shire council has so far installed underground electricity, water, stormwater and sewage to the Blue Gum Reserve site, as well as fencing around some sections.

This has allowed volunteers to start construction of about eight garden beds – hoping to build a total of about 14. Sowing of vegetables has started for an autumn harvest, with produce supplied to PICAL's food pantry and hampers.

The Victorian Health Building Authority moved the historic Coel's Shed to the site in December.

However the shire has yet to start construction of a concrete base and shed, and pergola for shade, planned to be built by March.

Two water tanks, currently stored at the shire depot, will also be moved to the gardens.

Once the garden and sheds are complete, PICAL can once again resume teaching horticultural courses.

"But it won't be ready for term one, but instead after Easter for term two."

## Boomerang Bags

Currently Boomerang Bags is homeless until the CFA moves out of its Settlement Road headquarters and the shire then refurbishes the building for community use.

As such Boomerang Bags is now being run out of a volunteer's backyard Cowes bungalow, making much-needed bags for food hampers.

Greg said in winter they will again repurpose unwanted fabric – which would otherwise go to landfill – to make door stoppers.

These are given away free to help householders cut power costs and maintain room heat.

Boomerang Bags had a major success when it secured Sustainable Victoria funding last year to buy heavy-duty sewing machines to repair tough fabric, such as tents, caravan annexes, boat hoods and ute covers.

"This saves these items going to landfill and is a much-needed community service," Greg said.

## New gym planned, waives parking

Cowes will get a new gym, if a planning permit – currently out for community feedback – is successful.

The permit is for shop 2, 158 Thompson Avenue, between Café Bazaar and Autopro, for a maximum

14 patrons, including two trainers.

To be called Crossfit Phillip Is, it will offer classes for 12, through appointments and bookings, with a membership base and access to non-members through an online system,

not open for walk ins.

There are no car spaces allocated for use by the businesses on site, however the business owners argue there is "ample" on street parking, with the "limited patronage and appointment only basis" ensuring surrounding businesses aren't impacted.

A traffic survey on November 30

between 9am to 5pm found "at least" 29 vacant car spaces "at any given time of the day".

According to the applicant, planning rules do not directly specify a specific parking rate applicable for restricted recreation facilities.

They roughly calculated a minimum of eight spaces could be con-

sidered "a sufficient parking requirement".

Bass Coast Shire planners have come under fire in recent years for continually waiving or reducing proposed developments' parking spaces as required under law, especially in town centres that are being squeezed by increased congestion.

**Handley & Anderson**  
FUNERAL DIRECTORS  
Servicing South Gippsland & Phillip Island

Locally owned and operated by  
**Scott & Sharon Anderson 5672 1074**

Caring and personal 24 hour Service

Main office Wonthaggi  
176 - 178 Graham Street, Wonthaggi

Cowes office (by appointment)  
15 Warley Avenue, Cowes 5952 5171

Email: [info@handafunerals.com.au](mailto:info@handafunerals.com.au)  
[www.handleyandandersonfunerals.com.au](http://www.handleyandandersonfunerals.com.au)

A.F.D.A.

PHILLIP ISLAND DENTAL  
Creating Smiles in Cowes

Dental Emergency Available

Teeth Whitening FREE HOME KIT

Check and Clean \$199

Wisdom Teeth FREE CONSULTATION

**\$499**

**HOLIDAY OFFER**  
WHITENING HOME KIT AND CHECK & CLEAN

A better life starts with a beautiful smile  
**BOOK YOUR APPOINTMENT NOW**

Shop 3,209-213 Settlement Rd, Cowes [www.phillipislanddental.com.au](http://www.phillipislanddental.com.au) (03) 9120 2122

# New sport event on island's calendar

A new multi-sport event is coming to Phillip Island, part of an Australia-wide series.

On March 18-19, a Swim Bike Run (SBR) Weekend will see a swim on the Cowes foreshore, a bike course starting at the Woolamai racetrack, and a running festival at Inverloch.

Bass Coast is one of five SBR Weekends, alongside Canberra, Adelaide, Port Stephens and Hervey Bay and this is the first of a three-year event, sponsored by Bass Coast Shire.

It is the brainchild of former triathlete Mark 'Emo' Emmerton, from Elite Energy, who visited the island last week to finalise details.

Emo describes SBR as a "choose your destiny" event, with competitors able to take part in either a swim, bike, or run individually (and enjoy the sights and surrounds of the area) – or take the plunge and participate in all three, making it a full triathlon – with each leg offering different distances.

"The most exciting part of this festival will be the run along the closed roads between Inverloch and Cape Paterson," Emo says.

"We feel this new run course has fantastic potential to rival some of Victoria's premier coastal runs with stunning ocean views.



A new multi-sport event in March will see a swim on the Cowes foreshore, a bike course starting at the Woolamai racetrack, and a running festival at Inverloch.

"This event is not your usual triathlon. It gives you the opportunity to rest between each leg."

With each event offering different distances, the swim in Cowes has four options: 4km, 2km, 1km or 500m.

Bike courses are: 106km, 66km, 47km, or 30km.

And run distances include: 42km,

21km, 10km, 5km or 2km.

"It's designed to be tailored, so the whole family can take part in an event," Emo says.

"From the elite triathlete to a first-time competitor, there's something for everyone."

Both the swim and run have prize money – equal for both genders – totalling \$4000, while the bike ride is

not a race but timed.

## Competitive

Emo is a former competitive triathlete who had 23 years in Royal Australian Navy logistics and has taken part in Hawaii ironman events through to a Simpson Desert run and has "nearly been to the top of Everest".

He started Elite Energy in 1999 and now oversees more than 40 multi-sport events in Australia, ranging from local fun runs to the Olympics.

"It's all about keeping people active and moving.

"There's also pride in telling people you've completed a triathlon, whether it's a 2km run or a 42km run."

Emo says they expect up to 1500 competitors for the March weekend, and also need up to 120 volunteers to help at each event, such as staffing drink stations, which can be a fundraiser for volunteer groups.

He says Bass Coast is an ideal destination for an SBR Weekend event and he's even looking to create other new Bass Coast trail running events in the future.

"Up until last week I hadn't been to the area for 40 years, since I last worked at HMAS Cerberus (across Western Port)," says Emo, who lives in southern NSW.

"But it was a cracker of a day when we visited Cowes. It's a great beach with fantastic coffee shops and we had a really friendly welcome from all the clubs and organisations."

Details: [sbrbasscoast.com.au/](http://sbrbasscoast.com.au/) and click on each specific event / Sponsored article /

# Island already stretched, say objectors to proposed subdivision

Phillip Island services are already overwhelmed by current residents and tourists and can't cope with any new development, say objectors to a proposed new Cowes subdivision.

A planning permit for 273-297 Church Street, opposite Anchor Belle Holiday Park and currently out for community feedback, is for a 59-lot subdivision and removal of vegetation on 3.6 hectares, which is zoned residential.

This new plan is near the recently-approved development for 256 lots at 299-325 Church Street, which will be a retirement village.

About 24 objectors have so far lodged submissions and debate has raged on social media.

In a growing trend by objectors, the majority of submitters argue local infrastructure is already stretched and it was "too easy for Bass Coast Shire to hand out permits" for new developments.

"Combined with the other dozen or so proposed developments for the Cowes district the entire area is rapidly becoming overcrowded, with no thought given to the future," writes one objector.

"The main Phillip Island road to Cowes is under increasing pressure from more and more traffic ... there is limited public transport or infrastructure in place for medical and emergency services that a percentage of these new owners will require.

"It's time practical thought went into the design of this, and other development and final decisions are not

based on maximum profits for council and the developers."

Another objector said the new subdivision would "strain" the island's resources such as water storage and waste disposal.

One submitter wrote "high density development is inappropriate for the island," citing the state government's declaration of Bass Coast as a distinctive area and landscape as a reason not to proceed.

The submitter said traffic was already busy at peak times and "overflow parking and traffic from the caravan park is already an issue".

"With the already approved development of the retirement village of 260 properties further along Church Street together with existing traffic, this will make Church Street very busy," they wrote, suggesting there could be an additional 300-600 cars.

"What infrastructure is available to support an additional 59 properties on top of the proposed retirement village? Public transport is minimal on the island.

"There is already enough pressure on medical centres on the island without another 59 properties on top of a new retirement village."

## Squeeze

Many argued the number of lots – the majority of blocks are less than 400sqm and some under 200sqm – was "excessive", with one describing it as a "sardine cramming subdivision".

"The design is not in keeping with the estates in Cowes, and for that



Many argue the number of lots in this Church Street subdivision is "excessive", with the majority of blocks less than 400sqm. "What infrastructure is available to support an additional 59 properties on top of the proposed retirement village?" submitters ask.

matter, the majority of the island. It appears it will be a treeless mini-suburb of oversized boxes with little, or no front or back yards, on oversized blocks, with minimal distance between houses.

"If approved, the development will set a precedent for more over-developed, and over-crowded estates in Cowes, and the island."

Several wrote it was an overdevelop-

ment "to ensure maximum financial return".

"The development application seems to be no more than a money grab for the developer and Bass Coast Shire with no consideration for the existing occupants of the land surrounding the proposed development."

There was confusion around which plan the developers would follow and several objectors said given all veg-

etation would be removed, there was no room for planting or green areas.

One wrote it was "inevitable this parcel of land should be developed" but suggested a reduction in the number of allotments as a compromise.

According to a vegetation report, .002ha of vegetation will be removed, with a permit required to remove 56 trees. A traffic survey by the developer was carried out on Wednesday March 23, 2022, concluding surrounding roads would continue to operate at a "satisfactory level of service".

## Support

While objectors become a legal player in the planning process, there was also debate by the public on social media, with several supporting the subdivision.

"Great for the local area especially with the current housing shortage across the region, including Cowes," wrote Aaron.

"This will help support those and also small to medium business."

Some people said small blocks were standard in "Northcote, Thornbury and the rest of the world".

"Every week we have people complaining there aren't cheap rentals available ... and properties are too unaffordable, and now when there is something cheaper being built, people are complaining about it," wrote Athol.

"Ask yourself whether you would still be against this if you couldn't afford to buy into the current market and this was your only option."

# THE SWIM

## BASS COAST

Swim the Island

### 18TH MARCH 2023

### COWES, PHILLIP ISLAND

Register now at

[theswimbasscoast.com.au](http://theswimbasscoast.com.au)



Tim and Max Anagnostou and Deb Leonard. The family support an upgrade to the skate facilities at Graydens Reserve and would like to see a pump track established at Cape Woolamai.



Bass Coast Shire Council's Ella Angarane with Newhaven Resident Chris Phillip's at the consultation session. Chris was against any upgrade and said the park was "perfect as it is".

# Residents' resistance continues

Having successfully thwarted a proposal to build a regional skatepark in Graydens Reserve, residents of Newhaven are continuing to battle the latest skate proposal for their area.

Between 30 and 40 people came along last Thursday to meet with representatives from the council, including members of the local residents' group and a handful of local skaters.

The Bass Coast Skate Park Strategy Review, released in September 2022, now recommends a local level skate park for Newhaven, with "mini ramp and basic street elements".

A council spokesperson said the skate park would be between 250-500sqm, compared to the current skate ramp area of 280sqm, and was a much smaller scale park than the original proposal for a regional park, which was fiercely opposed by residents.

"Once we've explained what we are trying to achieve, I think people feel a lot more comfortable," they said.

However it appeared the majority of the residents attending last week's consultation session were against the proposal, despite the strategy review stating that previous engagement undertaken for a regional skate park in Newhaven, showed there was "a lot of community support for a local scale facility" at Graydens Reserve.

Young skaters were noticeably absent at the event, with the average age of people in attendance well above 50.

Phillip Island resident Bucky Hamer has lobbied for decades for upgraded skate facilities in the area and said he believed most younger skaters were disillusioned with the process.

After filling in previous surveys and taking part in consultations, they were still without a skate park, plans for a regional facility had been shelved and little progress has been made on upgrading skate facilities on the eastern end of the island.

"Young people are not bothering to take part," he said of the latest round of consultation.

There is already a concrete skate and basketball area at Graydens Reserve, and while residents repeatedly said they weren't against skate parks, most opposed any upgrade to the current facilities.

However one skater described the proposed upgrade as a great opportunity to create a multi-use park.

"It is skate friendly, not skate specific," he said.

## Against

A letter distributed by the Newhaven Residents Group urged local residents to attend the consultation session.

It listed a series of questions for residents to consider, including how much of the park would be taken up by a skate park, what controls would be in place to make sure activities didn't "intrude on the safety and social activities" of other park users, lighting, parking, traffic controls and would it be "multifunctional" – to include bikes, scooters and other motorised vehicles.

For resident Chris Phillips, the park was "perfect as it is".

"Families with little kids come here and feel safe. There's plenty of things to do."

He'd prefer to see the existing skate ramp repaired.

"We don't need a concrete hole in the ground. This park is for little kids."

Donna Rule and Penny Manning were outspoken critics of the proposal to build a regional

skate park in Newhaven, and the new proposal hasn't impressed them either.

"We are angry," said Penny. "The only people the council are listening to are the skaters with the loudest voices."

Donna said she'd like to see a junior skate facility, suitable for primary school students, not one that catered for all ages.

"It needs to cater for the culture of this park and the people who use it," she said.

"That's mothers with little ones and a baby on their hip, not 40-year-old skateboarders."

The women are concerned about the safety of smaller children with an upgraded facility.

"It doesn't need sophisticated elements – just something suitable for kids on scooters and those learning to skate," Penny stated.

"Older skaters can go to Wonthaggi and Cowes."

The two women are determined to "protect our park", describing it as the main community asset of Newhaven.

John Pleiter said the council was not looking in the right place, and any new skate facility should be near the current ramp on Boys Home Road, next to the soccer oval.

"That whole sports area (in Boys Home Road) is underutilised.

"This is a community park for residents and visitors. Why destroy it?"

Pat said she and her husband had owned property in Newhaven for 40 years and putting in a skate park was "a terrible way to use public open space", that is already being used by families.

"What is there now is fine."

She believed an upgraded skate facility would attract older children and she was concerned about licenced premises near-by, and the lack of parking.

"Why does council want to upset the amenity of this park?"

"If the skate park has to be in Newhaven, put it in Boys Home Road. But I don't believe it has to be in Newhaven."

Other residents questioned council staff about plans for lighting and security and safety issues of children under 10 mixing with unsupervised older kids.

Another questioned why the proposal was being put forward at all.

"At the last meeting council left with little doubt of what the residents views are," he said.

He was also critical that the draft strategy was only available online, saying many older residents didn't have access to computers, and he questioned the focus on skate parks.

One council officer present outlined the support for various types of sport and recreation.

"We have quality skaters here," the council officer said.

"Skating is a popular pastime and there is a lot of interest in it."

He said residents concerns about any facility that was too large or too big for smaller kids was being heard "loud and clear".

Residents also raised concerns that an upgrade to the existing skate facilities would see an increase in anti-social behaviour, vandalism and public safety concerns, with some worrying it would attract older teenagers, swearing and drinking.

## Pro skate

A small contingent of local skaters showed up to support the proposal, with Bucky Hamer, a long-time advocate for better skating facilities, describing Newhaven as "the thorn in council's

side" in terms of the skate strategy.

A meeting earlier in the day at Wonthaggi was positive, while no one attended the meeting in Cowes.

For Bucky, the proposal was a chance to improve both local skating facilities and the park itself.

"This is the gateway to Phillip Island. We're a world class tourism destination and this park sets the tone."

He said the current "skate park" should be "taken to scrap", and the proposed upgrade of the skate and play area was a chance to do "something really nice" with the area.

Another local skater said Newhaven residents should visit the Cowes skate park one morning (which is larger than the proposal for Newhaven) and see how "cruisey and mellow" it is.

"It's like a family atmosphere. People of all different ages, everyone is watching over what is happening."

Deb Leonard supports the idea of a local skate park and said during a recent road trip to NSW, her family stopped in some wonderful skate parks, including in Bairnsdale, Sale and Merimbula.

"They were positive places for kids – it was great to see younger kids there developing their skills.

"It's a shame we are not giving our kids the same opportunity to become future Olympians or professional skateboarders."

Deb also called on the council to create a pump track in Cape Woolamai, suggesting a lot of Sunnyside Park in the estate was under-utilised.

Bass Coast Shire staff at the Newhaven session said the plan was to upgrade both the playground and the skate park, to provide improved facilities for the local community. The council would apply for grant funding for the project.

One local was not impressed. "Look at those kids over there," he said, pointing to children using the current playground.

"They seem happy with the playground." The meetings on January 19 in Wonthaggi, Cowes and Newhaven are part of the community consultation, which also includes an online survey at [engage.basscoast.vic.gov.au/skate-park-strategy](http://engage.basscoast.vic.gov.au/skate-park-strategy). Consultation closes on February 3.

## No skate "stepping-stones" says skater advocate

It was almost a decade ago when Bucky Hamer became president of the Foreshore SK8 Park group, to lobby for better skate facilities in the shire.

Bucky, who works at Island Surfboards, has welcomed the new skate strategy review after years of delay and controversy, which saw proposed regional skate parks at San Remo then Newhaven scrapped.

He says he's "not opposed" to the review recommending two smaller, sub-regional skate parks being built at Wonthaggi first, then Cowes.

But he is concerned that the proposal doesn't give skaters the opportunity for growth.

"There needs to be stepping-stones, and they need to allow for progression between the different parks, and not just have a lot of little parks that replicate the same facilities."

He believed that many of the fears and opposition to skate parks was based on misinformation, and a visit to some parks in surrounding areas could change people's views.

"I would love to organise a day out for them, get a bus and go and see what these skate parks are about.

"I'm sure they'd be going 'this isn't actually that bad'."

Skater Stephen Cripps said it was disappointing for local kids not having good facilities.

"There is a lack of community building, because they don't get to skate together.

"If there are lots of little hubs, it's not going to draw people from anywhere else."

Despite the setbacks – abandoning plans for a regional skate park after attempts in San Remo and Newhaven failed – Bucky said it was positive to see that skating was

still on the council agenda.

"There's a bowl going in at Kilcunda and they're using the best skate park finishers in the business.

"They understand the importance of getting it done right, and that there is a right way to do it.

"That's a big tick."



Bucky Hamer has been lobbying for better local skate facilities for over a decade. While he's not opposed to the recommendation to build two sub-regional parks, he is concerned the latest review doesn't give skaters the opportunity to grow their skills.



The concept designs for the Kilcunda skate park, one of several local level parks recommended under the review – including Newhaven, Corinella and Grantville.

# Skate review explained

In December 2023, councillors voted to adopt a Skate Park Strategy Review, written by consultants, which is now out for community consultation until February 3.

It recommends Wonthaggi receive the first of two sub-regional skate parks, to be built by 2024 at the site of the existing facility, which has yet to be upgraded.

The review says a Cowes sub-regional skate park should be built between 2024-26 at the old carnival site, on the corner of Phillip Island and Ventnor roads, which the shire

last year purchased for construction of a sports hub and pool, where space is available to the south for a skate park.

“Given it is on Phillip Island Road, adjacent to a proposed recreation reserve and on the residential outskirts of Cowes, it is considered a good location for a sub-regional skate park,” the review explains.

It states Cowes should be built after Wonthaggi, because the local skate park near the Cowes oval has already been upgraded.

The Cowes new facility will mea-

sure 600-1000sqm+, be designed for medium-sized events and competition, with complex obstacles, catering for beginner to advanced, with “potential for an iconic design and theme”.

It will allow for night use, and there should also be bouldering, climbing, games, kick about and basketball.

“It will cater to all styles of skate but focus on competition level bowls and transition to complement the local park facility already at Cowes.”

While a sub-regional skate park

measures 600-1000sqm+, a regional one is 1000sqm+ and more complex. The review does not recommend a regional park for the shire.

The review agrees with council’s previous proposal to build a local skate park at Graydens Reserve in the next two years, to replace the existing portable ramp, while Grantville and Corinella already have local skate parks and one is being built at Kilcunda early in 2023.

The review stated that given the population distribution of the shire, and the “significant travel time be-

tween towns” putting a single large facility in one of the larger townships would discriminate against skaters living elsewhere in the shire.

It says the new recommendation which includes two sub-regional parks and a number of local parks, means there are skate parks either in or close to all the major population centres in the shire.

For more details or to make a submission on the Skate Park Strategy review, go to: [engage.basscoast.vic.gov.au/skate-park-strategy](https://engage.basscoast.vic.gov.au/skate-park-strategy)



Don't travel to bushland on **Extreme Fire Danger Rating** days.

If you plan to travel through Victoria during fire season, it's important to check the Fire Danger Rating every day. If the rating is Extreme or Catastrophic, avoid travelling to high risk bush or grassfire areas. It's safer to travel to cities or towns for the day.

How well do you know fire?

Plan. Act. Survive. Go to [emergency.vic.gov.au](https://emergency.vic.gov.au)

# How to ease Cowes' traffic squeeze?



There has been a call for the Thompson Avenue traffic lights in Cowes to be changed to a flashing amber pedestrian crossing to solve the peak season traffic snarl.

The suggestion comes on the heels of Bass Coast Shire's attempts to resolve congestion, including the Cowes street masterplan, which will see a range of solutions including Thompson Avenue between The Esplanade and Chapel Street, becoming one-way in coming years.

The shire has also proposed a yet-to-be-funded new fleet of public electric buses – booked or hailed like a taxi – to be rolled out in a three-year trial across Phillip Island and San Remo.

And the shire has also installed controversial sensor parking, electronic signs and a parking app in a supposed bid to help drivers find parks.

On social media last week, Roger Hansen proposed the idea of an amber pedestrian crossing, saying it was a concept used in towns along the east coast.

"Two-thirds of the red light time there is nobody on the crossing," Roger commented.

"After six crossings, the mass of Christmas traffic is banked up through three roundabouts, back to Coles, Mitre 10 and as far as the RSL for incoming traffic.

"Once it is a solid unbroken line it is then hard for most to try and reverse out of their carparking positions. The town is clogged every day because of this."

Murray then suggested the island should introduce park and ride.

"It is used in the UK and works very well. There's plenty of land available for parking. Just needs a good bus shuttle service," Murray said.

Another said the congestion was "not helped at all by council allowing restaurants and cafes to take away dozens of parking spaces to expand outdoor eating areas".

In one case, dining tables and seats are actually permitted to take up roadway space.

## More people

Don suggested painting double lines on Thompson Avenue to stop vehicles turning into parking bays on the opposite side of the road, although he said we should just get used to the snarl.

"There will be no relief in the holiday peak. Traffic will be always congested and it doesn't matter if there was more



Residents have suggested a range of ideas to help ease Cowes' traffic congestion.

parking," Don said.

"The population is increasing with more housing estates and more tourists coming here."

Don highlighted the engineering explanation that building more roads just made traffic worse.

"I've been building bridges and freeways for years and every so many years they widened lanes and it still got congested at the other end."

Elizabeth agreed saying one traffic light wasn't the problem but too many people, drivers waiting for carparks and cars reversing.

Jade said Cowes was clogged because of population growth and increased visitors, not the traffic light.

"You have cars navigating roundabout intersections with massive numbers of foot traffic also entering those intersections at the same time," she wrote.

"I do think like the blue line there is a way for VicRoads and council to improve traffic management and flow and perhaps pedestrian safety too."

Others commented the problem was cars letting pedestrians cross at roundabouts, while Amanda said visitors slowed at the Newhaven school crossing, even though it only operates in school hours.

Several wrote it was only a problem a few weeks a year and had always been a "nightmare" at Christmas.

## Pedestrian-friendly

While much of the debate in recent years has focused on traffic gridlock driving on to the island at peak season – leading to calls for an expanded bridge and a four-lane Phillip Island Road – clogged streets in townships are increasingly under the spotlight, with the island a natural bottleneck.

Transport advocate Mary Whelan, who has lobbied on transport issues since 2010, last year said Cowes and San Remo needed to steer away from reliance on cars and become more walking and cycling-friendly – with improved public transport – to deal with increasing urban road congestion.

"The future is not more road space for cars. We need to create a transport system that provides real alternatives to private vehicle travel," Mary said.

"With an increasing permanent population and an annual increase in visitors the desire to maintain Phillip Island's unique value means we must commit to a sustainable transport system."

Details: [engage.basscoast.vic.gov.au/PTondemand](http://engage.basscoast.vic.gov.au/PTondemand)

## IGA robbery update

Detective Acting Sergeant Peter Johnston of the Bass Coast Crime Investigation Unit said the recent burglaries at Cowes and San Remo IGA were committed by a group of teenagers from the Springvale area.

He said the group stole a Mercedes from a home burglary in the Keysborough area and travelled to Wonthaggi. After an unsuccessful attempt to break into the Wonthaggi IGA, the teens drove to San Remo and Cowes.

Both town's IGA stores were damaged and some alcohol was stolen. The gang was also involved in a petrol drive off at the Bass Service station.

The investigation by the Southern Metro Crime Team is ongoing.

## Warrant issued

Police are appealing for assistance to locate Joshua Nagle after the 21-year-old failed to appear at court. He is known to frequent the Latrobe Valley and Bass Coast areas.

Anyone with information on his whereabouts is urged to contact Crime Stoppers on 1800 333 000.

## Trolley prank forgiven

A Victorian police officer, caught on camera being wheeled around a Cowes roundabout in a shopping trolley on New Year's Eve, will not be reprimanded.

The officer went viral after footage surfaced of her outside Cohiba bar, with other officers and patrons looking on.

The video was viewed over 100,000 times and attracted thousands of comments, with most people applauding the young officer.

A police spokeswoman said the matter was dealt with at a local level, "with conversations held with

the officers in the days following the incident".

"This workplace guidance included reiterating the safety risks," the spokeswoman said.

"No further action will be taken."

## Altercation in Cowes

Police are investigating an altercation near a licensed premises in Cowes. The incident occurred on The Esplanade around 11.30pm on Friday January 13.

Investigators have been told that a confrontation between three men occurred out the front of the premises, during which a knife was produced.

Police have released images of two males they believe may be able to assist with their enquiries (available on the Bass Coast Eyewatch Facebook page).

Anyone who recognises the men or witnessed the incident is urged to contact Crime Stoppers on 1800 333 000 or submit an online confidential report at [www.crimestoppersvic.com.au](http://www.crimestoppersvic.com.au).

## French Island air crash

A plane crashed and flipped onto its head trying to land on French Island on Saturday.

Victoria Police confirmed emergency services attended an aircraft accident on French Island.

"It's understood a plane carrying a pilot and one passenger landed on a landing strip and the plane flipped just before 2.30pm on January 21," a police spokesperson said.

"One person was taken to hospital with non-life-threatening injuries. The exact cause is not known at this stage."

The Australian Transport Safety Bureau have been notified and will investigate.

# \$50 million boost from MotoGP™ return

The Australian Motorcycle Grand Prix returned to Phillip Island in October 2022, bringing with it a much-needed boost to the Bass Coast region's economy.

After a three-year hiatus, the MotoGP™ saw crowd numbers surge, with an estimated 91,000 international and domestic spectators flocking to the island to witness the racing spectacle.

With the crowds came a spike in accommodation and hospitality bookings, as well as local retail spend, culminating in a direct input of approximately \$50 million to the area.

"Our surrounding suburbs across Gippsland all saw an increase in bookings for visitors and fans of MotoGP," said Destination Phillip Island's General Manager Kim Storey.

A short ride from the circuit, local pub Hotel Phillip Island had a record weekend across the event, breaking targets and securing the financial stability of the business across non-peak periods.

"It is part of our DNA, hosting these events and welcoming visitors from around the world," said Hotel General Manager, Dale Larkin.

"Financially wise, the GP event is equivalent to nearly four months in winter.

"Without the GP event being down here, we would struggle as a business year on year, so it's great that it continues to come back."

Local businesses such as coffee store G'Day Tiger welcomed the closure of Cowes' main thoroughfare, Thompson Avenue, to facilitate the Blessing of the Bikes and an extended outdoor licensed area with live bands and a superscreen showing race highlights.

Pre-event and post-event tourism also brought an influx of economic benefits, with attendees opting to stay for longer periods to enjoy Phillip Island's attractions. The benefits of the event extend over the San Remo bridge and into neighbouring regions, with surrounding suburbs seeing a dramatic increase in bookings.

Economic impact aside, Phillip Island remains one of the MotoGP™ riders' favourite circuits to race. Whether it be the relaxed island 'vibe', or the hospitable nature of the locals (you'll likely spot a rider at the pub), the impacts of the event to the region are immeasurable.

The Australian Motorcycle Grand Prix will return to Phillip Island on October 20-22, 2023.

For more information visit [www.motogp.com.au](http://www.motogp.com.au)



The MotoGP returned to Phillip Island in October 22, with the largest crowd since two-time MotoGP World Champion Casey Stoner last raced on home soil back in 2012. The event boosted the local economy, bringing approximately \$50 million to the area. Photo: Alia Schonberg.



# Million dollar makeover for Shetland Heights Road

After years of lobbying, residents of Shetland Heights Road are rejoicing as long-awaited upgrade work begins on their road.

Bass Coast Shire Council announced this week that works connecting greater San Remo to the township of San Remo, via improvements to Shetland Heights Road, will begin in February.

The \$1.85 million project includes the installation of new pavement and sealing of the road, a new concrete footpath, installation of kerb and channel at selected locations, plus associated drainage.

"The upgrade works to Shetland Heights Road have been a long time coming, so we're very excited for these to kick off as we start 2023," Bass Coast Shire Mayor, Cr Michael Whelan said.

"Linking all of San Remo will provide huge benefits to the community by increasing access to our town and each other, boosting our economy and rebuilding connections.

"We're also looking forward to the new road attracting people back to San Remo, as we continue to welcome visitors to our beautiful region. Thanks to the federal government for funding the project, to rebuild post-pandemic."

## Campaign

The decade long fight by residents to have the road sealed has finally come to an end.

Back in March 2019, local residents ramped up their calls to Bass Coast Shire Council to fully seal Shetland Heights Road and install drainage and lighting to prevent a major accident.

The list of issues raised with the council included safety, dust, poor signage, traffic volumes, lack of drainage or footpaths, health risks and excess speed. It was also noted that the road was an alternative emergency access route and was regularly used as an alternative



In 2019, residents called for Shetland Heights Road at San Remo to be sealed before there was a serious accident on the busy thoroughfare. In December 2020, announcement of the new secondary campus at the end of the road increased their concerns. Work to upgrade the road is finally set to begin next month.

route to Phillip Island Road during peak periods.

A community meeting outlining the issues was attended by five of the then councillors and over 40 residents.

Presentations showed concerns about the road had been raised as part of consultation for the San Remo Access Strategy, which was adopted by Council in 2013.

The residents successfully lobbied to have the road moved to the top of the council's Urban Roads improvement list, which would see the road upgraded under a special charge scheme.

When the location of the new San Remo Junior School Campus was announced at the intersection of Potters Hill and Shetland Heights roads, the residents intensified their

calls for the upgrade, saying the increased traffic meant that government, not residents, should pay for the upgrade.

Initially they were told there were no plans for the road to be upgraded as part of the school development.

However in February 2022 it was announced the road would be sealed, thanks to funding from the Federal government, council and developer contributions.

At the time, Stephanie Davidson from the Safer Roads for San Remo Committee said she was thrilled at the news.

"It is an immense relief to everyone in the local community to see that our concerns over safety, speed and dust have been recognised and acted upon; we cannot wait for construction to begin."

## Construction

Council advises the first stage starts with roadworks on Shetland Heights Road unsealed section between Penniwells Drive (east) and Potters Hill Road in early-February.

Council has appointed SR Excavations Pty Ltd after a competitive open tender process. The total project cost is in the order of \$1.99 million which is jointly funded by the Local Roads and Community Infrastructure Program - Phase 3 (\$1.847 million), which aims to assist community led recovery from COVID-19 by supporting local jobs, firms, and procurement and Council's adopted Capital works road renewal program 2022/23.

This project is due to start on February 6 and is expected to be com-

pleted in early June 2023, subject to favourable weather, contractor availability and material supply.

In a statement released this week, council said the aim of the project is "ensuring the urban road network is safe and sustainable for the community into the future and appropriate levels of service are maintained".

The works will include road pavement widening, driveway crossover works, asphalt sealing, underground stormwater drainage, speed humps, line marking and signage, kerb and footpath construction.

Council advises there will be significant changed traffic conditions including full road closure and detours will be in place for the duration of the project.

Stage 1 is from early February to late March 2023. A full road closure will be in place between Shetland Heights Road from Potters Hill Road to Small Court.

Stage 2 will be from early April to mid-May 2023. A full road closure will be in place between Shetland Heights Road from Penniwells Drive (east) to Small Court.

No through traffic will be allowed from mid-February until the completion of the works in early June. During the closure all through traffic will be detoured via Phillip Island Road.

"We encourage road and pedestrian users to allow enough time, seek alternate routes, and avoid the construction area during these times. Local and emergency access will always be maintained," a council spokesperson said.

"Our contractor will make every effort to minimise disruptions to motorists, school, residents and businesses. The community, residents, businesses, and other stakeholders will be kept up to date with the project via Council's website, QR code on the project sign and letter box drops or mail outs, where appropriate."

For more information, visit [engage.basscoast.vic.gov.au/shetland](http://engage.basscoast.vic.gov.au/shetland)

# WHEN YOU NEED US, BUT NOT THE SIRENS

YOU CAN GO  
ONLINE NOW

VICTORIA POLICE

VICTORIA  
State  
Government

**SAVE**  
**131 444**  
FOR NON-URGENT SITUATIONS

**POLICE**  
VIC.GOV.AU



Brad Whittaker, Chair of National Surfing Reserves Australia attended the competition and presented the committee with an Outstanding Services award, accepted by committee member Sally O'Neill. Photo: Nici Cahill, Snapshot Photography.



The winning team – Crushers – captained by Nick Fostin, celebrate their win at the 10th Anniversary Surfing Teams Challenge on the weekend. Photo: Nici Cahill, Snapshot Photography.



Glyndyn Ringrose of third place getters, Newhaven College's Spoonbills team. Photo: Mun Chin.



Carl Wright captained his Flames team to second place in the competition. Photo: Mun Chin.

For more photos, visit [pisra.com.au/sport](http://pisra.com.au/sport)

- ### Results
- 1st: Crushers, captain Nick Fostin (84.7 points) – \$2000
  - 2nd: Flames, captain Carl Wright (81.7 points) – \$1000
  - 3rd: Spoonbills, captain Glyndyn Ringrose (66.8 points) – \$500
  - 4th: Go Eddie
  - 5th: Waxheads
  - 6th: Woolamai Hards
- ### General awards
- Best Super Grommet: Toby Davies (Crushers)
  - Best Junior: Chad Garrett (Crushers)
  - Best Kneeboarders: Gary Lewis, Andy Whitby and Deanna Dwyer
  - Best Single Fin Rider: Cam Goldsbury (Woolamai Hards)
  - Best Malibu Rider: Ben Taylor (Waxheads)
  - Best Over 50 Short Board Rider: Glyndyn Ringrose (Spoonbills)
  - Best Twin Fin (pre-1985): Ravi Fostin (Crushers)
  - Rip Curl – Best Performance by non-sponsored surfer: Toby Davies (Crushers)
  - Ramada Resort – Outstanding performance by a male surfer: Joe Van Dijk (Crushers)
  - Ramada Resort – Outstanding performance by a female surfer: Ebony Maier (Go Eddie)
  - Rip Curl/Islandis – Highest scoring wave: Joe Van Dijk (Crushers – 9.5)
  - Best Tradie: Cam Goldsbury (Woolamai Hards)
  - Best Team contributor: Ryan Haine (Woolamai Hards), Drew Johnson (Waxheads), Blake Green (Spoonbills), Sonny Steiner (Flames), Nat van der Heyden (Salty Sisters), Toby Davies (Crushers), Eddie Maier (Go Eddie), Cody Campbell (Midlife Crisis).

# Waves roll for 10 years of island surfing spirit

From page 1  
 “This comp format is a special one on the island’s surfing calendar,” said comp organiser, Boardriders Club Life Member and founding surfing reserve member, Geoff Owens.  
 “It brings all ages and styles into the water and reflects exactly what the Surfing Reserve is all about – quality waves, solid competition and the intangible spirit and connection of surfing culture and sense of community.”  
 As the finals unfolded, it came down to the wire with surfers pulling out some double whammies and their best moves to match the waves.  
 Contest director Adrian Sorati along with judges Pal Cinninas and Dean Langford sat with eyes glued to the waves all day as the teams took to the water and gave it their all.  
 When the final timer sounded, surfers washed off the salt and met at the Boardriders Club to await the highly anticipated presentation.



Danielle Bayliss crossed her arms to claim the power wave double points for Salty Sisters. Photo: Peter Fogerty.

**10th Anniversary**  
 Being the tenth anniversary of the establishment of Phillip Island National Surfing Reserve, the presentation ceremony was especially poignant, opening with Dogga Luke reciting the poem he wrote for the launch in 2013.  
 Brad Whittaker, Chair of National Surfing Reserves Australia Board, made the trip down from his home break of Cronulla (Australia’s first National Surfing Reserve) in New South Wales to join the comp and also experience firsthand why the island is Victoria’s only declared surfing reserve.  
 As part of the 10-year celebrations Brad noted how incredible and iconic Phillip Island is as a model for other reserves around Australia such as Point Sinclair (Cactus) in South Australia and Kalbarri in Western Australia.  
 “I reckon this is the number one

Surfing Reserve in Australia because of your activism, it’s a great effort to be celebrated. It’s also all about the future generations of surfers,” Brad said.  
 Brad presented the working group with a certificate to honour the 10-year anniversary which was accepted by one of the founding group members, Sally O’Neill.  
 “It’s all about the future generations of surfers,” concluded Brad acknowledging the keen grommies sitting cross legged on the floor in the front row.

**Awards**  
 Michelle and Rebecca Fincher presented the Dave Fincher memorial

trophy to Team Crushers who won first place along with \$2000 prize money and the honour of holding the coveted trophy for one year.  
 The Flames captained by Carl Wright won second place while the Spoonbills captained by Glyndyn Ringrose took out third place.  
 In fourth place was Go Eddie featuring Ebony Maier surfing with her Uncle Adrian for the first time. The team also had the youngest competitor, Eddie Maier aged seven, and oldest in surfing legend Bobby Matthews, aged over seventy, all working together to take out fourth place.  
 Other highlights of the award ceremony included the best single fin rider awarded to Cam Goldsbury

**Community**  
 “We were incredibly humbled by the support of all sponsors and acknowledge recent years have been tough for everyone, but their unwavering support demonstrates the importance the community puts on this team event,” said Geoff Owens.  
 Ongoing event sponsors included: Phillip Island Nature Parks, Bass Coast Shire Council, Westernport Water, Phillip Island RSL, Newhaven College, The Cape Kitchen, Full Circle, Ramada Resort by Wyndham, Rip Curl Phillip Island, Full Circle, Island Surfboards, San Remo IGA and Print It Fast. Many local businesses also provided goods for the raffle and a percentage of proceeds will support Lifeline Gippsland 13 11 14.  
 Geoff Owens concluded the ceremony saying: “On our tenth anniversary, it’s incredible to look back on what has been achieved.  
 “Notably, the spirit, history and culture of surfing and the legacy that this sport has left on the island’s environment, culture and identity. It’s also a great time to thank all the dedicated volunteers and supporters over the first decade of the reserve.  
 “We are proud to have kick started the Festival of Surfing to celebrate the 60th anniversary of Phillip Island Boardriders Club and continue to play our part in surfing history.  
 “I want to thank everyone for coming and continuing to support this community surfing event held in our wonderful National Surfing Reserve.”  
 The National Surfing Reserve is proud to be having a stall at Cutback Festival as part of the Festival of Surfing on Saturday February 25 – see you there!  
 Check out and post event photos and see updates all year round on Facebook and Instagram: @phillipislandnsr



The unique tag-team format sees teams of nine compete, with categories covering all ages. Nala Jitdamrong from the Waxheads team makes the tag. Photo: Nici Cahill, Snapshot Photography.



The comp included all ages, and these young surfers were having a great time. From left: Hamish (Waxheads), Rhyll (C-Salt), Ry (Spoonbills) and Jesse.



Tag team – Abbey Clarke and Natalie van der Heyden from Salty Sisters.



Catherine Basterfield, CEO of PINP, the event’s major sponsor, with National Surfing Reserves Australia Chairman Brad Whittaker who travel from NSW to attend.



Judges were kept busy with 11 teams and 99 competitors across the Teams Challenge. From left: Pal Cinninas, Dean Langford and Adrian Sorati.



Presenting the Dave Fincher Memorial Trophy were Dave’s daughters Michelle and Bec Fincher. Photo: Nici Cahill, Snapshot Photography.



Graeme Clausen and Mal Gregson, inspecting the archives which show the history of surfing on Phillip Island.



Anthony Fradkin from Musclescope Massage in Cowes was on hand all day to help any competitors needing a quick adjustment.



Enjoying the presentation evening from left: Sian Adnam, Ebony Maier (Go Eddie), Hannah Eisen (PIBC President and Salty Sisters) and Sophie Fletcher (Flames). Photo: Nici Cahill, Snapshot Photography.



At the Teams Challenge, past and present presidents of the Phillip Island Boardriders Club – Hannah Eisen and Geoff Owens.

Phillip Island Boardriders Club  
**FESTIVAL OF SURFING**  
 Celebrating 60 Years

**Festival Program\***

- 3rd February  
 Festival Opening - Bang Bang Vintage Surfboard Display
- 4th February  
 ‘Come and Try Surfing’ Island Surfboards 03 5952 3443
- 4th - 5th February  
 Woolworths Victorian Junior Surfing Titles - Round 1  
 P.I.B.C team representing at the Australian Boardriders Battle
- 11th February  
 P.I.B.C Cat Bay Longboard Classic  
 P.I.B.C Supergroms Smiths Beach
- 12th February  
 DSA - Smiths Beach
- 15th - 16th February  
 24/7 Surfers Rescue Program
- 18th February  
 P.I.B.C Twin Fin Event
- 18th - 19th February  
 Indigenous High Performance Training Camp - Surfing Australia
- 25th February  
 Victorian Open Round 3
- CUTBACK FESTIVAL**  
 P.I.B.C 60 Years Celebration
- 26th February  
 Victorian Teams Titles

\*For more details please head to our website and social media. Dates and locations may change.

[www.pibc.com.au](http://www.pibc.com.au)



An initiative of the School Council, a GAGA pit has been constructed. A fast paced, high energy sport played in an octagonal pit, it's dubbed a gentler version of dodge ball.



Constructing the new octagonal GAGA pit at Cowes Primary School.



The school pool will be well utilised in Term 1, after a busy summer holiday season, where Vic Swim ran a three-week water skills program for young swimmers.

## Cowes ready to welcome students back

The 2023 school year is set to commence on Monday January 30, and staff cannot wait to welcome students back.

"Unlike previous years, 2023 is set to commence with a lot more certainty now Covid restrictions have eased. It will be wonderful for students, staff and parents to mix freely," said Principal Rodney

McKenzie.

The incoming Prep cohort will be supported to maximise the success of their schooling journey with small class sizes of just 15.

The low numbers will ensure there is plenty of opportunity for personal attention and additional instruction as these students establish their foundational skills.

The school's strategic staffing plan has ensured no vacancies have been left unfilled like many schools across Victoria. The school is set to welcome eight new teaching and education support staff this year. Students will also be supported by an extensive team of professionals including a full-time speech pathologist, full-time wellbeing teacher

and learning tutors.

Facility upgrades include new shade sail areas to support outdoor learning and a GAGA pit which was an initiative of the student council.

The school facilities have been heavily utilised over the break and Vic Swim have successfully taught a large number of young swimmers

to strengthen their water skills as part of their three-week program in the school pool.

This year Christine Wickes will be taking an extended period of long service leave and we wish her an enjoyable break after a significant period of service to Cowes Primary School which has exceeded 40 years.



### PROVIDING A SEAMLESS EDUCATION SPANNING FROM BIRTH TO YEAR 6

AT COWES PRIMARY SCHOOL & EARLY LEARNING CENTRE WE PRIDE OURSELVES ON:

- ◆ Excellent academic results
- ◆ Caring, dedicated and supportive staff
- ◆ Full-time wellbeing staff member
- ◆ Social skills and wellbeing curriculum
- ◆ Modern technology including iPads, laptops and interactive televisions
- ◆ Full-time speech pathologist
- ◆ Excellent modern facilities – including a NEW competition sizes gymnasium'
- ◆ Strong community links
- ◆ Environmental initiatives
- ◆ Swimming, tennis courts and vegetable garden
- ◆ A range of specialist classes including Music, Art, Japanese, P.E., Library and STEM

Our state of the art Early Learning Centre offers a dedicated Kindergarten program in purpose built rooms in addition to long day care services for students ranging in age from 6 weeks to 5 years



JD012364A



The ABC's "Keep on Dancing" sparked a surge of interest for adult dance classes and Phillip Island Dance Studio has now introduced a new dance movement for the Over 55s. Photo: ABC TV.

## Dance yourself to health

Phillip Island Dance Studio has introduced a new dance movement class for the Over 55s.

This is the first time the studio has offered the class specially tailored to older adults.

Rowena Campbell, the dance school founder and instructor said the idea had been bubbling in the background for many years, but up until now, she hadn't had the capacity to offer the extra class.

An added impetus came from the ABC TV program "Keep on Dancing", which aired late last year.

The two-part special "Keep on Dancing" (now available on iView) followed a 12-week program where nine older Australians aged over 65 explored the power of dance.

The aim was to slow the effects of ageing and help improve their health and the results were amazing and uplifting.

"After the ABC show I got a lot of phone calls from people asking if I'd run a class for older people," Rowena said.

"But even before the show, I had people ringing about daytime adult ballet classes."

The new Over 55s Dance Movement Class will run on a Thursday from 10.30am – 11.30am.

Rowena is expecting a good response, and urged anyone interested to get in touch.

"You may have danced in the past, but you don't have to have a dance background. The class can cater for all levels," she said.

"It will be determined by what people can and can't do, for safety. We don't want to injure anybody ... no one will be doing triple pirouettes."

The class will initially focus on ballet barre work, but ballet clothes will be optional.

"I know the thought of wearing a leotard terrifies some people. You can just wear comfortable clothes and people can start off in their socks," Rowena said.

"We'll start with barre work, before going to the centre of the room for more lyrical stuff."

"It's important for expres-

sion to be free, and ballet doesn't have to be rigid.

"But I do like the repetitiveness of the ballet barre. It challenges the brain, challenges memory," she said.

"It builds up core strength for posture and the bone strength it builds up is important for older people. It improves balance, especially for people who are starting to feel their mobility is going."

For all the physical benefits of ballet, Rowena believes it is also good for mental and emotional health.

Plus there's the social side of a weekly class – "everyone getting out and enjoying having a laugh".

"Time in the studio is a time away from stress," she said.

"You don't have to be the best dancer to get a lot of benefits out of it."

The classes are held at The Centre, 223 Settlement Road, Cowes.

Follow Phillip Island Ballet Studio on Facebook.

For more class information email: [phillipislanddancestudio@gmail.com](mailto:phillipislanddancestudio@gmail.com)

#### FOR INQUIRES PLEASE CONTACT EITHER:

**PRINCIPAL:** Rod McKenzie **PHONE:** 5952 2132  
**EMAIL:** [cowes.ps@edumail.vic.gov.au](mailto:cowes.ps@edumail.vic.gov.au)  
**WEB:** [www.cowespsphillipis.vic.edu.au](http://www.cowespsphillipis.vic.edu.au)

**EARLY LEARNING CENTRE DIRECTOR:**  
 Karen Treppo **PHONE:** 03 5952 1747  
**EMAIL:** [office@pielc.com.au](mailto:office@pielc.com.au)

# Local students have curious minds

Local students Tilia Pires-Andersen and Lara Smyth from Newhaven College are two of 120 girls selected for Curious Minds, a STEM program for female students in Years 9 and 10 from regional, rural and low socio-economic areas across Australia.

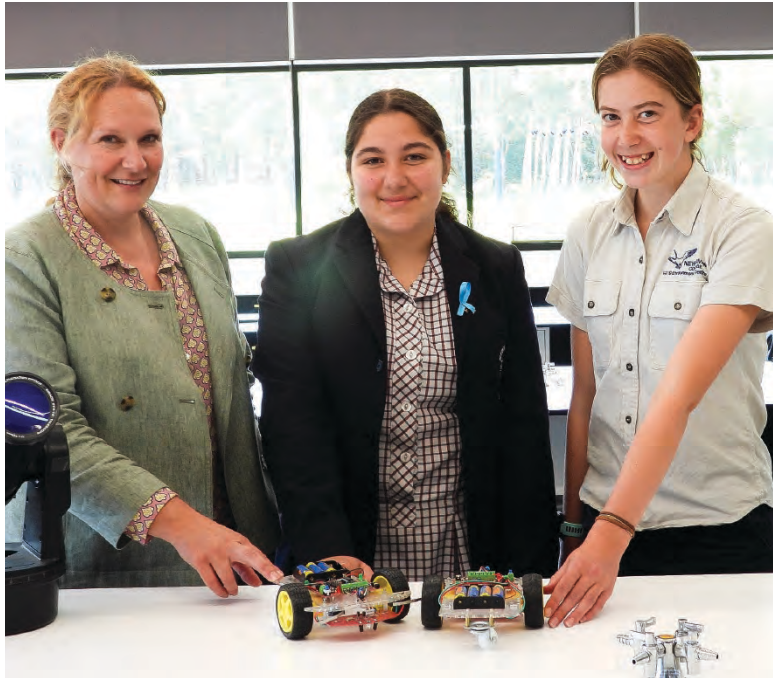
Across six months, students selected in Curious Minds will engage in extension STEM workshops and activities to increase their confidence in science, technology, engineering and Maths (STEM).

The students will attend summer and winter camps where they'll get a chance to learn about STEM through hands-on experiments and workshops, explore university campuses and meet new friends. The online summer camp kicked off for east-coast residents who met virtually from December 11. Students will come together to meet face-to-face in July 2023.

Curious Minds gives participants access to STEM role models by matching students with female and non-binary mentors working in STEM fields. In partnership, students and mentors explore STEM subjects, university courses and career pathways while creating personal goals and discussing STEM interests.

This year's mentors include a diverse mix of engineers, physicists, mathematicians, research and medical scientists, medical practitioners, chemists, geologists, and environmental scientists.

Tilia is particularly interested in maths and hopes to pursue a career in civil engineering where she can use her maths skills. Participating in the Curious Minds program, Tilia is excited to meet women working in STEM professions.



Head of Mathematics, Newhaven College, Melinda Kelly with Tilia Pires-Andersen and Lara Smyth. The girls have been selected for Curious Minds, a STEM program for female students in Years 9 and 10 from regional areas.

"I am looking forward to this year's camp at ANU. I am extremely excited to meet a group of like-minded people who I can hopefully make lasting friendships with," she said.

Lara loves all STEM subjects, particularly maths, biology and chemistry.

She is looking forward to working with other girls who have a passion for STEM and being able to meet them face-to-face in Canberra. When asked about her future she says, "I'm interested in studying science at uni-

versity and then moving into medical research."

Head of Mathematics at Newhaven College, Melinda Kelly is excited for the girls.

"Both Tilia and Lara are perfect candidates for the Curious Minds Project. They are hard-working, capable students who always apply themselves and we are really proud of them," Melinda said.

According to the 2022 STEM Equity Monitor, 41 per cent of girls think that they're not "smart enough" to



Tilia Pires-Andersen is particularly interested in maths and hopes to pursue a career in civil engineering.



Lara Smyth is interested in studying science at university and then moving into medical research.

study STEM.

"Curious Minds aims to change girls' perceptions and improve their confidence," said Australian Science Innovations Executive Director Alyssa Weirman.

"Only 21 per cent of girls want to pursue a STEM career compared to 42 per cent of boys.

"Curious Minds aims to show girls the vast diversity of STEM careers, and how women are making a difference in their chosen fields."

Jointly delivered by The Australian Maths Trust (AMT) and Australian Science Innovations (ASI), Curious Minds participants are selected based on their academic performance and interest in STEM. Students should also live in regional, rural, or low socio-economic areas, or have otherwise experienced limited opportunities.

"This program switches girls on to all aspects of STEM, exposes them to outstanding role models, and brings girls together in an extension learning environment where they get to know other young women like themselves who are passionate about STEM," said program director Dr Kelsie Dadd.

"This year is particularly exciting as we transition back to a face-to-face model after several years of online learning due to the pandemic.

"Students will have a chance to explore the world-class facilities at The Australian National University or the University of Adelaide and explore options for further study."



## Where every child finds their place

Newhaven College's holistic approach to education ensures every child is seen, valued and cared for throughout their entire school life.

To find out more contact our registrar Belinda Manning on 03 5956 7505 or email [belinda.manning@newhavencol.vic.edu](mailto:belinda.manning@newhavencol.vic.edu)

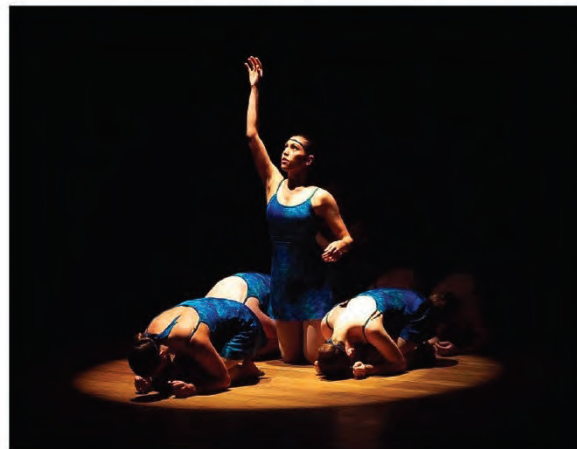


**NEWHAVEN COLLEGE**

IN QUIETNESS AND CONFIDENCE SHALL BE YOUR STRENGTH

1770 Phillip Island Road,  
Phillip Island, Victoria

[newhavencol.vic.edu.au](http://newhavencol.vic.edu.au)



## PHILLIP ISLAND DANCE STUDIO



A nurturing school bringing the joy of Dance to Bass Coast for over 20 years for ages 18 mths - Adult  
Safe & age appropriate dance  
Contemporary, Jazz, Classical, pointe  
[phillipislanddancestudio@gmail.com](mailto:phillipislanddancestudio@gmail.com)



Next month's Morning Melodies is Legends and Love Songs, featuring Gavin Chatelier. Friday February 10 at The Centre, 223 Settlement Road, Cowes at 10.30am.

## Get into Morning Melodies

The word is spreading about the fantastic Morning Melodies shows on the second Friday of the month in Cowes.

So far, Tom Jones and Elvis have featured in these professional tribute shows which have got plenty of toes tapping. The next show on Friday February 10, Legends and Love Songs, featuring Gavin Chatelier, will spread some love in the lead up to Valentine's Day.

Gavin makes star perfor-

mances at The Elvis Parkes Festival and the Blue Mountains Festival every year. And it is a pleasure to have him perform in Cowes.

Morning Melodies is run every second Friday of each month at The Centre, 223 Settlement Road, Cowes.

Shows start at 10.30am. Admission \$15per head.

Entertainment is co-ordinated and supplied by Singer/Entrepreneur Eddie James, from James Leigh Entertain-

ment Promotions.

Tickets can be booked by phoning 9704 7304 or 0428 712 783

Tickets will also be sold at the door.

Coming up: ABBA Tribute, John Rowles/Engelbert Show, 50s 60s 70s Legends, Shirley Bassey Tribute, Olivia Newton John Tribute and the Elvis Gospel Tribute.

Don't miss out on these amazing Morning Melodies. / Sponsored Article /

## Respect and celebrate national day

The theme for this year is Reflect, Respect and Celebrate, and a series of events are on offer across Bass Coast this Thursday January 26th for Australia Day.

**GATHERING OF NEIGHBOURS**  
Rhyll Hall and Park, Lock Road

11am – 3pm  
Hosted by the Phillip Island and San Remo Rotary Club  
Family entertainment, music, workshops, food vans plus art exhibition at the Rhyll Hall.

**WONTHAGGI UNION**  
**COMMUNITY ARTS CENTRE**

7.30am – 11am  
Hosted by the Rotary Club of Wonthaggi  
Breakfast from 7.30am, with presentation of Community Awards at 9am.

**OZ DAY AT THE DALY**  
**Dalyston Recreation Reserve**  
4pm – 9.45pm  
Adults \$10, family \$20 (two adults and up to four children under 18). Book at [Trybooking.com](http://Trybooking.com)

Music, children's activities, carnival rides, food and drinks, with 9.30pm fireworks.

*In recognition that Australia Day represents a day of mourning and reflection for many, the Bass Coast Reconciliation Network does not hold events or promote the day.*

*Some businesses allow employees to substitute the public holiday for another day.*



Bass Coast Health CAC member Gill Scrase (second from left) with CEO Jan Child (second from right) at a Community Forum at the Phillip Island Golf Club at Cowes. They are with forum participants Louanne Caldwell, Graeme Cock and Judy Cock.

## Community members invited to contribute to Bass Coast Health

Bass Coast Health (BCH) takes pride in working with the community to deliver optimal healthcare to the residents and visitors of Bass Coast and South Gippsland.

It says its Community Advisory Committee (CAC) is essential in helping it gather the community's feedback about current services and services they would like to see in the future.

BCH is now seeking expressions of interest for three new members to fill vacancies on the CAC and act as a conduit between the community, the Board of Directors, the Executive and staff.

Current CAC Chair Diana Holmberg would love people who are passionate about

healthcare and the community to join.

"The CAC helps to ensure broader community needs and expectations are considered in decision-making about the health service," she said.

"We also share news about our expanding services with our community. We provide feedback and advice, and represent the community on committees that ensure consumer voice is central to the delivery of our health services.

"We seek members of all ages and backgrounds who can bring lived experience, skills and considered thinking.

"Most of the members have multiple connections into the

community through other organisations such as the U3A and RSL."

The CAC had a pivotal role in the planning of the new Wonthaggi Hospital that opened recently.

See current CAC Members: [www.basscoasthealth.org.au/about/community-advisory-committee](http://www.basscoasthealth.org.au/about/community-advisory-committee)

Please note this is a non-paid (voluntary) role. To learn more, phone Director Partnerships and Engagement Kristen Yates-Matthews on 0427 475 259 or view the position description online at: [basscoasthealth.mercury.com.au](http://basscoasthealth.mercury.com.au)

Please submit your Expression of Interest form by 5pm on Sunday February 5.

26.01.23

# AUSSIE CHECKLIST

- Got the ute.
- Got the dog.
- Got the hat.
- Got the farm, the boots and the pub.
- GOT THE BIT OF PAPER!



CONGRATULATIONS ON BECOMING AN AUSSIE, JEFF. FROM ALL YOUR MATES AT THE WESTERNPORT - WHERE ELSE?!



## Join the Fun!

Live Music • Food Vans • Clowns  
Stilt Walkers • African Drummers  
Art Exhibition & More.....



## Australia Day

Reflect, Respect, Celebrate.

# Thursday January 26 11am Rhyll Hall & Park



Partnered with



Phillip Island & San Remo

# The island is buzzing

In 2023 there's a common theme across the edible gardens opening on Phillip Island as part of the annual Bass Coast Edible Gardens event – buzzing bees!

Rooks Little Farm and the Phillip Island Community Orchard will be hosting free workshops by local beekeeping expert, Gary Morton.

Gary will provide advice on beekeeping safety, equipment and how to get started with flow hives. You can catch him on Saturday February 4 from 10am – 1pm at Rooks Little Farm or on Sunday February 5 from 10am – 1pm at Phillip Island Community Orchard.

At Chill House Mini Farm in Cowes, Paul will be offering tastings of his fruit and berry-flavoured meads (fermented honey), as well as selling honey. His 'Bad Bees' honey labels are a work of art!

This year's Edible Gardens event provides the opportunity to visit 15 flourishing food gardens across Bass Coast Shire.

"We have some crowd favourites returning, such as Mary's San Remo garden that features hydroponics and an urban food forest", said Sharon Willcox, Events Coordinator.

Nine new gardens are included in the 2023 event including the Cape Farm in the Cape Paterson Ecovillage, as well as private gardens in Wonthaggi, Inverloch, Cape



As part of this year's Edible Gardens event, Chill House Mini Farm in Cowes will be offering tastings of fruit and berry-flavoured meads (fermented honey), as well as selling its "Bad Bees" honey.

Paterson and Coronet Bay.

The Bass Coast Edible Gardens event is organised by Bass Coast Adult Learning in Wonthaggi. Tickets are \$25 to visit all 15 gardens, or \$5 to visit individual gardens, with entry free for children under 16 years. Tickets can

be bought online at [www.basscoastediblegardens.com](http://www.basscoastediblegardens.com) or through cash sales on the weekend.

All 15 edible gardens are open from 10am to 4pm on Saturday February 4 and Sunday February 5.

*/ Sponsored Article /*

# Probus Club of Cowes bursts into song

The Probus Club of Cowes now has its own club song.

At the last meeting, members were treated to a rendition of the new song, after the words of a song (author unknown) were found in the club archives.

Our Vice-President Pat Bowen organized a competition. Participants were invited

to use the words which could be altered if necessary, and to put them to music.

Four entries were received and the winner was Nadia Cole.

The two judges Rob Watson and John Swarbrick sang the song and played the accompaniment. Judging by the audience's applause it was a great success.

## Melaleuca Lodge Auxiliary SECOND HAND BOOKS

**SALE - LAST DAYS  
HUGE DISCOUNTS  
KIDS BOOKS \$5.00 a bag (supplied)  
DVDS 10 for \$1.00**

### BILLS BOOK SHED

Watchorn Road Cowes | 0437 949 029  
Gift Vouchers Available



# Julie Houghton and Friends presents Sounds of Summer

A musical journey in song and story is coming to Cowes on February 4.

Following the sold-out concert at St John's Uniting Church in February 2022, Julie Houghton and Friends return to present an afternoon of delightful music from the popular classical repertoire, music theatre and Gilbert and Sullivan with a touch of poetry and humour.

Featuring a special tribute to the great English contralto Kathleen Ferrier, in the 70th anniversary of her death, Sounds of Summer promises to be a moving concert of fine performances, a little laughter and tunes you will love.

Master of the piano David McNicol returns to accompany the cast and offers a virtuoso solo performance of his own. Soprano Suzanne Shakespeare, baritone Christian Smith, mezzo-soprano Jennifer Wakefield and actor and host Julie Houghton promise you an entertaining afternoon, with a special appearance by pint-sized pianist Matilda Shakespeare Curcio.

Julie is well known to music and arts lovers, having worked as a journalist and announcer at the ABC. She can also frequently be heard on 3MBS as an arts interviewer and is the music reviewer for [classicismelbourne.com.au](http://classicismelbourne.com.au). She is also resident actor for The Palour chamber music group.

For lovers of classical music, this is one not to be missed.

Light refreshments will follow the performance.

Saturday, February 4 at 2pm at St John's Uniting Church, corner Chapel Street and Warley Avenue, Cowes.

Tickets are \$20 adult and \$15 concession, children free.

Bookings and enquiries: Lyn Francis 5952 5723.

*/ Sponsored Article /*



Julie Houghton and Friends return to St John's Uniting Church on February 4 with a concert paying tribute to English contralto Kathleen Ferrier.

JULIE HOUGHTON AND FRIENDS  
PRESENT  
**SOUNDS OF SUMMER**  
on Saturday 4th. February  
at 2:00 p.m.  
at St. John's Uniting Church  
cnr Chapel St. and Warley Ave  
Tickets \$20 adult, \$15 concession  
and children free  
Bookings and enquiries to  
Lyn Francis 59 525 723

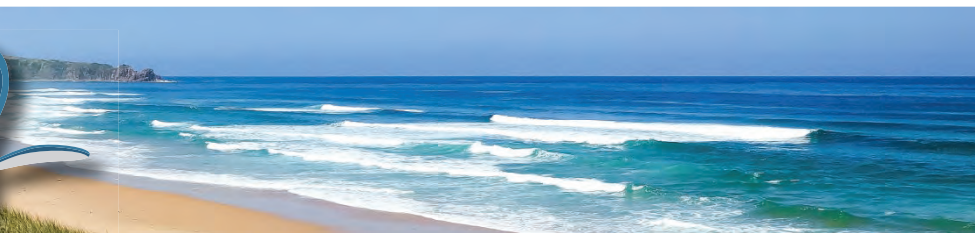
**PICES POP UP ART SHOW**  
PHILLIP ISLAND CONTEMPORARY EXHIBITION SPACE  
26 exciting artists from Bass Coast and beyond are participating in the 4th series of PICES Pop Up weekly exhibitions at:  
**Ramada Resort Phillip Island**  
2128 Phillip Island Road, Cowes  
January 4 – January 30  
Open daily 10am – 4pm (closed Tuesdays)  
[www.pices.com.au](http://www.pices.com.au)  
@picesartspace  
Bringing contemporary art to the community

**MORNING MELODIES**  
FRIDAY 10th Feb.  
Showtime 10.30am  
EVERY SECOND FRIDAY OF THE MONTH

**LEGENDS & LOVE SONGS**  
By GAVIN CHATELIER  
Reserve your seat by booking or purchase your ticket at the door  
**ADMISSION \$15 PER HEAD**



Appearing At: 223 Settlement Rd., COWES BOOK NOW! 9704 7304 or call Michael 1800 247 669



A free workshop on beekeeping a Flow Hive will be held at the Phillip Island Community Orchard on February 5, from 10am – 1pm.

## Get in the flow with bees

Field Phillip Island are Flow Hive ambassadors and are inviting the community to learn more about the joys of beekeeping.

They are holding a free workshop on Sunday, February 5 from 10am – 1pm at the Phillip Island Community Orchard (PICO).

This workshop will introduce beekeepers to the delight and fascination of this rewarding hobby.

Topics include:

- The wonderful world of honey bees
- Bee keeping safety and equipment

- Beginner beekeeping with a Flow Hive

Please wear a broad-brimmed hat, long-sleeved shirt with a collar, long trousers, shoes and socks as you will be near bees.

Your trainer Gary has been a beekeeper for 20 years. He bought his first Flow Hive 10 years ago and wants to share his tips and techniques to help get you started on your beekeeping journey.

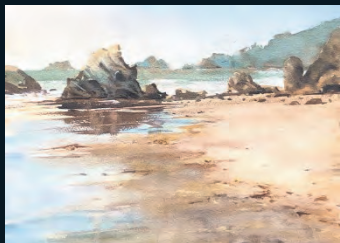
To enrol email [watersportsaustralia@gmail.com](mailto:watersportsaustralia@gmail.com) or send a direct message to Field Phillip Island on Facebook @field\_phillip\_island.



Georgia Temas from our Photo Contributors group captured this glorious sunset over the Cowes jetty last week, with diners enjoying tapas and paella.



Early Morning Magic, Cowes by Diana Edwards



Reflections in the Sand, Walkerville by Tom Tyrrell



Happy Moments Gullivers, Cowes by David Taylor

## Presenting a special art exhibition and sale **COLOUR AND LIGHT**

By Artists

**DAVID TAYLOR** A.W.I.F.V.A.S, **DIANA EDWARDS** A.G.R.A.F, **TOM TYRRELL**

Opening Sunday, January 1st

Continues daily through January 10am – 4.30 pm.

Recent artwork from the Bass Coast and surrounding districts and many areas of travel in Australia and overseas.

Enjoy these special moments, a special time of sharing the beauty of art through the eyes of each artist.

Selected works, both framed and unframed show the passion and journey explored in recent times for all to enjoy.

**ILUKA**  
STUDIO GALLERY

28 Settlement Road, Silverleaves, Phillip Island, 3922  
Phone 0427 947 889 | 0418 565 796

**FEEL THE SPEED WITH BREATHTAKING OCEAN VIEWS**  
AT PHILLIP ISLAND GO KARTS + VISITOR CENTRE

Contact the visitor centre to make a booking.  
Call 5952 9400 or email [vc@phillipislandcircuit.com.au](mailto:vc@phillipislandcircuit.com.au)

381 Back Beach Rd, Ventnor VIC 3922 [www.phillipislandgokarts.com.au](http://www.phillipislandgokarts.com.au)

A SLICE OF MELBOURNE, MEETS THE SHORES OF COWES, WITH A TIPSY TWIST!

**THE TIPSY COWE**  
TAPAS RESTAURANT & BAR

SHOP 3/16 THE ESPLANADE, COWES | OPEN 7 DAYS



Churchill Island, with its characteristic panoramic views, will be transformed into an unforgettable but casual performance space. The family-friendly event provides a chance to make the most of the summer air and laze away the end of the weekend.

Kicking off Sunday Summer Sessions on January 29 is versatile local duo The Times.

# Sunday Summer Sessions return

The Sunday Summer Sessions return to Phillip Island from January 29. This free event will feature local acts performing on the picturesque grounds of Churchill Island, against its breathtaking oceanic backdrop.

Locals and visitors alike are welcome to the Sunday Summer Sessions, which are set to run on the front lawn once a month until March.

No ticket is required to enjoy the summery ambience at the event, running between 2pm and 5pm, with delicious food treats and beverages (avail-

able) to keep the good vibes flowing.

The first afternoon of music will begin on Sunday January 29 and presents local versatile duo The Times, who play a range of music from past to present.

In February and March, the line-up moves the spotlight onto the acoustic tones from a Phillip Island singer and guitarist, Dann Lunn.

Organised by Phillip Island Nature Parks, Sunday Summer Sessions are running on the same luscious green lawn as Ocean Sounds, a music-lov-

ers all-day sunset concert series.

Churchill Island, with its characteristic panoramic views, will again be transformed into an unforgettable but casual performance space. The family-friendly event provides a chance to make the most of the summer air and laze away the end of the weekend.

With a long and interesting history, Churchill Island is a meaningful site for the Boonwurrung / Bunurong. With heritage buildings from the 1800s, a working farm and a vast array of birdlife, the island is a special

place to many.

Visitors will also find 240 heritage-listed trees and the first European garden in Victoria, so there is no shortage of green spaces to explore while visiting.

For those who cannot help but fall in love with the unique and historical grounds, the Friends of Churchill Island Society (FOCIS) is always open to new members.

Summertime is a beautiful season to make the most of Phillip Island, with abundant sunshine and a

buzz of activity. This event on iconic Churchill Island will be a moment to slow down and soak up cool tunes, tasty food, delicious drinks, and good company.

The three-part series of Sunday Summer Sessions creates the ideal atmosphere for a Sunday well spent. Come along to find out yourself.

Head to 'What's On' at penguins.org.au to find out more. [www.penguins.org.au/about/functions/sunday-summer-sessions/](http://www.penguins.org.au/about/functions/sunday-summer-sessions/) / Sponsored article /

## \$25 UNLIMITED

BOWLING LAZER TAG AND TABLE TENNIS

6.30 - 9.30PM

Minimum four per lane | Every night over the school holidays

5952 3977

SETTLEMENT ROAD, COWES



**PHILLIP ISLAND  
TENPIN BOWLING**

UNLIMITED  
DEAL RUNS FROM  
BOXING DAY UNTIL  
AUSTRALIA DAY!

CHURCHILL ISLAND  
HOT SUMMER DAYS  
*presents*

# SUNDAY SUMMER SESSIONS

This is a **FREE** event.  
No ticket required.

Join us for an afternoon of cool tunes, beverages, and delicious food treats on the picturesque Churchill Island front lawn with a fantastic line up of local acts for your entertainment.

**LINE UP**  
Sunday, 29 January - The Times  
Sunday, 26 February - Dan Lunn  
Sunday, 26 March - Dan Lunn

**TIMES**  
2.00pm - 5.00pm

Phillip Island  
**NATURE  
PARKS**

[penguins.org.au/events](http://penguins.org.au/events)  
#PhillipIslandNP

Time Unwinds  
**CHURCHILL  
ISLAND**

246 Samuel Amess Drive



**Cape Cruise** **Phillip Island Seal Cruise** **Phillip Island Sunset Cruise**

Wildlife Coast Cruises  
WWW.WILDLIFECOASTCRUISES.COM.AU CALL 1300 763 739

**OFF GRID | LINE | ROAD**  
#GETOFFONFRENCHISLAND

**NATURALISTE TOURS**

Get OFF GRID, take yourself OFF LINE & venture OFF ROAD. Discover this unique, unspoilt, remote destination.... French Island. [naturalistetours.com.au](http://naturalistetours.com.au) or call 03 5257 4570

**Hop on over**  
French Island and Phillip Island

WESTERNPORT FERRIES

Sail to French Island, a pristine, off the grid eco destination. Perfect for nature lovers, cyclists & walkers!  
[westernportferries.com.au](http://westernportferries.com.au) or call 03 5257 4565

**Beach HQ**  
Restaurant & Bar

5/17 The Esplanade, Cowes, Vic  
Info [beachhq.com.au](http://beachhq.com.au)  
BOOKINGS RECOMMENDED (03) 5952 1717

**ISLAND HEALING**

[www.islandhealing.online](http://www.islandhealing.online)  
03 5956 7886

**BANG BANG**  
BAR AND FOOD

OVER 50 VINTAGE SURFBOARDS ON DISPLAY  
13/18 Phillip Island Road, Cape Woolamai  
5922 4374

**GRUMPY'S CRAZY GOLF**

OPEN 7 DAYS

**OPEN HOURS:**  
9am till late - 7 days a week  
152 Thompson Avenue, Cowes.  
5952 3060 | 0408 120 908  
No weather problems - Crazy Golf is under cover!

**DAILY SURF LESSONS**  
DURING THE SCHOOL HOLIDAYS

\$75 - 2 hour lesson - everything provided  
225 Smiths Beach Rd, Smiths Beach  
**BOOK NOW Ph: 5952 3443**

**DEAD4EVA Designs**

An alternative store offering signature designs, alternative streetwear, scooters, scooter accessories and tattoo studio.  
Shop 2, 82-84 Thompson Ave Cowes  
[www.dead4eva-designs.com](http://www.dead4eva-designs.com) Ph: 0438 378 061

Watch the Little Penguins waddle home

See more & SAVE with a 4 PARKS PASS

Phillip Island NATURE PARKS  
Visit Penguin Parade, Churchill Island, Antarctic Journey, Koala Conservation Reserve  
**BOOK NOW** [penguins.org.au](http://penguins.org.au)

**i island GUIDE**

**WESTERN PORT BAY**

**Phillip Island DIRECTORY**  
WE ARE Phillip Island  
[www.WeArePhillipIsland.com.au](http://www.WeArePhillipIsland.com.au)  
FOLLOW ON

**Phillip Island National Surfing Reserve.**  
The reserve is made up of four sites along Phillip Island's coast: Cape Woolamai, Smiths Beach, Summerland and Cat Bay.

**WHALE MIGRATION**  
Witness the annual arrival of humpback and southern right whales and even the occasional killer whales from May to September.

**PHILLIP ISLAND NATIONAL SURFING RESERVE.**  
The reserve is made up of four sites along Phillip Island's coast: Cape Woolamai, Smiths Beach, Summerland and Cat Bay.

**CO-OP**  
FRESH LOCAL SEAFOOD  
SCRUMPTIOUS FISH & CHIPS & MORE  
NEXT TO SAN REMO JETTY  
170 Marine Pde, San Remo 5678 5206  
OPEN 7 DAYS 10:30am-7pm

**PHILLIP ISLAND GO KARTS & VISITOR CENTRE**

**rusty water restaurant & bar**  
1821 Phillip Island Tourist Road  
Ph: 5952 1666  
(next door to A Maze 'N' Things)

**THE TIPSY COWE**  
TAPAS RESTAURANT & BAR  
SHOP 3/16 THE ESPLANADE, COWES | OPEN WED-MON

**Phillip Island TENPIN BOWLING & Entertainment Centre**  
5952 3977  
OPEN 7 DAYS

**Phillip Island CO-OP**  
FRESH LOCAL SEAFOOD  
SCRUMPTIOUS FISH & CHIPS & MORE  
NEXT TO SAN REMO JETTY  
170 Marine Pde, San Remo 5678 5206  
OPEN 7 DAYS 10:30am-7pm

**Phillip Island HELICOPTERS**  
www.pih.com.au

**Phillip Island GO KARTS & VISITOR CENTRE**

Contact the visitor centre to make a booking.  
Call 5952 9400 or email [vc@phillipislandcircuit.com.au](mailto:vc@phillipislandcircuit.com.au)

# KEEP IT LOCAL

## DIRECTORY

### AUTOMOTIVE

**Service Centre**  
Phillip Island Tyre Service  
101 Settlement Rd, Cowes 5952 1480

**AMAZING THINGS**  
OPEN 7 DAYS from 10am  
1805 Phillip Island Rd, Cowes  
Ph: 03 5952 2283  
amazethings.com.au  
FUN | MAGIC | ADVENTURE

**3925 ESPRESSO**  
Open 7 days from 7am  
24 Phillip Island Rd,  
Newhaven  
3925espresso.com.au

### FURNITURE OUTLET COWES SALE NOW ON

**MATTRESSES**  
ALL SIZES AVAILABLE AT GREAT PRICES  
Queen/double/single/king single/king size  
PLUS Beds / tallboys / bedside chests. Etc. etc.  
DELIVERY AND TAKEAWAY AVAILABLE

**BEATS PRICES IN MELBOURNE**  
Furniture Outlet, P/L. 153 Thompson Ave. Cowes.  
0402 042 576.

PHILLIP ISLAND  
**TYRE SERVICE CENTRE**  
3 HARVEY DRIVE, COWES  
03 59 523 305  
PHILLIPISLANDTYRESC.COM.AU  
HELLO@PHILLIPISLANDTYRESC.COM.AU

WWW.WILDLIFECOASTCRUISES.COM.AU  
**Cruise the Island**  
four departing daily  
Wildlife Coast Cruises

**SAN REMO CO-OP**  
FRESH LOCAL SEAFOOD SALES  
TAKE AWAY  
FISH & CHIPS  
OPEN 7 DAYS 10.30-7pm  
ORDERS 5678 5206

### BEAUTY

**Mobile Hairdresser**  
Over 20 years experience  
Claire Sunderland 0408 566 620

**Phillip Island Tenpin Bowling & Entertainment Centre**  
91-97 Settlement Rd, Cowes  
5952 3977

**THE JETTY**  
Phillip Island  
Private functions welcome  
thejettyphillipisland.com | thejettyphillipisland@gmail.com

**Interiors**  
Interior Design & Decoration  
Homewares & Gift  
Shop 6, 34 Thompson Ave, Cowes  
Visit us : 5/26 The Concourse, Cowes  
Phone us : 03 5951 9829  
website: brinniethome.com.au  
@brinnietdesign @brinniethome

**Elsvana Hair Studio**  
A private modern luxe studio with one on one service  
Call 0448 867 387 to make an appointment  
Bayview Grande Arcade, 16 The Esplanade, Cowes.

**PHILLIP ISLAND MARINE**  
OPEN 7 DAYS  
5956 9238 14 Beach Road, Rhyll

**KRISTO'S**  
CHARCOAL ROTISSERIE  
Online ordering now available  
kristoscoves.com.au | 03 5952 3355  
Shop 5 /15-16, The Esplanade, Cowes

Gifts Repairs  
Custom Designs Watch Batteries  
**JEWELLER**  
Shop 2, 69 Chapel St, Cowes | 5678 5788

**The Centre**  
COWES  
Venue for Hire  
Call 1800 247 669  
thecentreowes@hotmail.com  
Music. Arts. Dance.  
Functions. Private Events.

**waterboy**  
— CAFE —  
58 Chapel St, Cowes Ph: 5952 5765

**Farm Fermented Refreshing Beverages**  
islandbeer.com.au

### FINANCE

Your local bank for locals  
**Bendigo Bank**  
San Remo (03) 5678 5833  
Cowes (03) 5952 3383  
Grantville (03) 5678 8773

James Leigh Promotions presents ...  
**Morning Melodies**  
Held at: 223 Settlement Road, Cowes

**"THE BEST HAMBURGERS ON THE ISLAND"**  
ONE WITH THE LOT ... HEAVEN! CHIPS TOO!  
ORDERS 5907 6796  
RHYLL GENERAL STORE AND BOTTLE SHOP

**LJ Hooker Home Loans**  
Gippsland  
For all your refinancing or home loan needs in Gippsland and surrounds.  
Gabriel Caffieri - Franchise Owner | Lending Specialist  
gcaffieri@ljhookerhomeloans.com.au | 0421 338 914

**TICKETS SOLD AT THE DOOR!**  
Admission \$15 per head.  
Bookings are preferred for groups to reserve seating (limited seating).  
Call 9704 7304 or 0428 712 783 or Mike on 1800 247 669.  
HELD EVERY 2ND FRIDAY OF THE MONTH 10.30AM

**moneytalkplanners**  
mortgages • insurance • super • retirement  
69A Chapel Street Cowes  
For appointments Tel 5952 1770

### REAL ESTATE

**FIRST NATIONAL REAL ESTATE**  
OPEN 7 DAYS  
www.phillipislandfn.com.au 5952 3922

PHILLIP ISLAND DIRECTORY  
WE ARE  
**Phillip Island**  
www.WeArePhillipIsland.com.au  
FOLLOW ON  
Facebook Instagram  
JD01900AA

**RayWhite**  
Selling more properties on Phillip Island than any other agency  
5952 2799  
raywhitephillipisland.com.au

**SPECIAL OFFER**  
**FREE FOR FOUR WEEKS\***

\*PRICES STARTING FROM \$10 AT WEEK FIVE

ads@pisra.com.au

PHILLIP ISLAND & SAN REMO  
**ADVERTISER**

Support the businesses at the ♥ of our community

# Opportunity abounds in San Remo village

A fantastic opportunity to live in the gorgeous seaside village of San Remo exists in the heart of one of Bass Coast's tourist towns.

Property like this is rare in this area, with endless possible uses to build an income and lifestyle that is the envy of your friends.

Situated on approx. 800sqm are two homes, one with a shop and dwelling, currently being used as an antique store.

The rear dwelling is a western red cedar modern two storey, two-bedroom home with exceptional north facing views over the streetscape and Westernport Bay. Open plan living with a number of windows offers the big blue as a constant feature as you relax by the fireplace. Wander into the master bedroom with ensuite and separate walk-in robe and enjoy your morning coffee on the balcony overlooking the bay.

One can't help but imagine a boutique style B&B here or simply just enjoy it yourself.

The lower level hosts a sunroom, a large bathroom with spa, separate toilet, bedroom and laundry with outside access. There is

plenty of storage with a garage and workshop.

The front dwelling, also western red cedar, opens out onto a grassy lawn and the many locals and tourists meandering along the footpath would find the entrance an inviting curiosity. Currently the dwelling is being used as an antique shop and it works well with its quirky fixtures and fittings and cute little original cottage kitchen. There is a possibility to convert this place back into accommodation or rental or even expand on the commercial side of things. It includes three bedrooms with adjacent dining and kitchen areas and bathroom. There are high ceilings plus slate, timber and carpet throughout.

This property is one for the imagination.

Well suited to entrepreneurs or two families or an outstanding business location for the right idea. Opportunities are also available for the high-rise apartment developer.

Address: 109 Marine Parade, San Remo

Agent: Leanne Poulton, eview, 0437 441 237



Situated on approx. 800sqm are two homes, one with a shop and dwelling. This property is in the heart of the San Remo village.



This property is one for the imagination. Well suited to entrepreneurs or two families or an outstanding business location for the right idea.



The front dwelling of this 800sqm block is a western red cedar home. Currently the dwelling is being used as an antique shop.

## WHAT'S YOUR PROPERTY WORTH?



30 Potters Hill Road, San Remo  
4 bed | 2 bath | 2 car  
676m2



107 Bayview Ave, Tenby Point  
4 bed | 2 bath | 1 car  
1302m2



12 Ventnor Road, Cowes  
5 bed | 3 bath | 2 car  
587m2



4 Moondara Drive, San Remo  
4 bed | 2 bath | 2 car  
552m2



6 Deena Place, San Remo  
Vacant Land  
526m2



16 Bermuda Bend, Coronet Bay  
3 bed | 1 bath | 2 car  
524m2

**eview**  
REAL ESTATE



Leanne Poulton  
0437 441 127



Fiona Treloar  
0499 889 588



Natalie Miskolczy  
0483 056 187

**eview**  
REAL ESTATE

NO OBLIGATION FREE APPRAISALS



With an elevated floor plan to capture breathtaking ocean views, this three-bedroom (plus home office) property is sure to impress.

### Executive living San Remo-style

With an elevated floor plan to capture breathtaking ocean views, this three-bedroom (plus generous home office / fourth bedroom) property is sure to impress.

The sophisticated design and quality build delivers open plan and private living options. Beginning with tiled entrance and soaring ceilings, the first two bedrooms have built in robes, as new carpet, and appealing garden outlooks. Entrance level is well-equipped with a modern family bathroom with large spa bath, separate toilet, and spacious laundry with ample storage, including under stairwell. With floor heating, this section of the home is both practical and comfortable with modern aesthetics such as crisp white walls and quality window furnishings.

Solid timber underfoot, the upper level is where the astute design is highlighted with lofty ceilings complementing the open plan kitchen with stone bench top. Set to entertain, overlooking the spacious dining and out to the private balcony with a protected undercover barbeque area – sunsets are a must see with the spectacular water views to Phillip Island. Taking advantage of the ocean surrounds, the carpeted lounge steps up a level to take in the magnificently framed Bass Strait, with clear views across to the head-



Taking advantage of the ocean surrounds, the carpeted lounge steps up a level to take in the magnificently framed Bass Strait, with clear views across to the headland.

land. Including updated split system, wall heater and natural elements, the hub of this family home offers a space for everyone to relax and enjoy. The master bedroom, with contemporary layout to maximise space, has a walk-in robe, and features ensuite with double vanity. Complete with generous study / fourth bedroom, separate toilet / powder room, laundry and recycling chute, the diligence to ensure comfortable living is exceptional.

Off-street parking and storage are well catered for with double garage with internal access including mezzanine storage and workshop space walking through to the back yard. An outdoor sink with hot water plumbing is a bonus for

the saltwater enthusiast!

Set on minimal maintenance landscaped gardens this two-storey modern home is just one of two in the development and sitting on its own title. Conveniently located within walking distance to magnificent local beaches and shops and cafés, this exceptional solid beachside home, ideally based in the picturesque seaside village of San Remo, is only moments from Phillip Island and within 90 minutes of Melbourne CBD.

Garth Lisle Property Consultants at San Remo welcome your enquiry. Phone: 5678 5878.

Address: 1b Panorama Drive, San Remo

Features: three bedrooms / one office / two bathrooms / four cars



This is a great opportunity to purchase a home on the west side of Red Rocks Road, with picturesque rural and water views.

### Rural and water views at Red Rocks

In a word ... wow! This is a great opportunity to purchase a home on the west side of Red Rocks Road.

You will have picturesque rural and water views, with sunsets over paddocks, native trees and a golf course. With two informal living zones, splashed with sunshine and warmth, this home is designed for living and entertaining.

When you enter the home you are greeted with the first living area, two bedrooms, bathroom, laundry and separate WC.

The large master bedroom, with spa bathroom is located downstairs, with direct access to the rear private undercover lower deck. The large glass area offers views of the back garden. There is a split system AC installed.

The main living area is located on the upper level and offers incredible views of Phillip Island and Westernport Bay. The lounge feels light and airy featuring a large area of glass and a wood heater and split system AC.

The renovated kitchen with dining area has access to the



The main living area is located on the upper level and offers incredible views of Phillip Island and Westernport Bay, opening up onto an spacious covered deck.

spacious top covered deck. There is more than adequate room to sit al fresco and enjoy spectacular sunsets.

The driveways and large carport offer plenty of off-street parking. The rear garden is fully fenced and is child and pet friendly.

The Red Rocks Road area of Phillip Island is very popular, and properties on the west side of the road are rarely listed for sale.

If you are looking for that

very special property with a rural aspect and a country feeling, just a short stroll from the beach, put this on your list of homes to inspect. Everything is ready, just move in and enjoy.

Call Alex Scott & Staff today on 5952 2633 to arrange your private inspection.

Features: three bedrooms, two bathrooms, two living areas, off street undercover parking

Price: Asking \$890,000



70 Lantana Rd Cape Woolamai  
Price: \$1,050,000

4 bedrooms / 2 bathrooms / 6 cars

Complete with modern indoor above ground Heritage Spa Pool and separate sauna, this four-bedroom, two bathroom home is equipped to please, and will cater to anyone seeking extra space for car, boat or caravan.



61 Panorama Dve San Rem  
Price: \$1,100,000

3 bedrooms / 3 bathrooms / 3 cars

With dominant water and Island views at hand as soon as you enter 61 Panorama Drive, this substantial brick home is certain to please. A superb opportunity to act now and secure a scarce hill-top position with supreme horizon views.



50 Back Beach Rd San Remo  
Price: \$969,000

4 bedrooms / 2 bathrooms / 3 cars

Ideal location and with all the hard work done, this as new four-bedroom family home typifies relaxed seaside township living. Moments from the beach and shopping village, this stunning new home provides extensive and modern beachside living with the luxury of a minimal maintenance lifestyle.

FOR FURTHER INFORMATION CONTACT SELLING AGENTS:

SCOTT LETHBRIDGE 0407 543 154 | MIKE CUNNINGHAM 0412 280 777 | JOHN SHAW 0418 545 041

Shop 3/129 Marine Parade SAN REMO  
5678 5878 www.gipc.com.au

GARTH LISLE  
Property Consultants

## Charm and character

This charming property is located in the desirable Smiths Beach estate on 607m (approx.) block of land.

The house has three bedrooms, two downstairs, while the entire upper level is a parents' retreat featuring a large space, an ensuite and walk in robe with views out to the back garden.

A large open kitchen/dining/living area accessed by an undercover deck, has raked ceiling with feature timber beams and white painted timber ceiling, creating a large, open, light and airy entertaining or relaxing space.

Family bathroom, separate toilet and separate laundry are added fea-

tures to enhance its desirability.

Fully fenced with a boat shed and a wood storage area to the rear of the shed, supplying wood for the interior combustion heater for the winter to come.

Address: 12 Dolphin Drive, Smiths Beach  
Contact: OBrien, 03 5952 5100



The house has three bedrooms, two downstairs, while the entire upper level is a parents' retreat featuring a large space, an ensuite and walk in robe with views out to the back garden.



A large open kitchen/dining/living area accessed by an undercover deck, has raked ceiling with feature timber beams and white painted timber ceiling.



The new era for OBrien Real Estate Judith Wright continues with its overhaul under new management reaching a new stage as they expand to a new office in San Remo.

## One owner – first time ever for sale

Much-loved family holiday home of over 40 years is now ready for its new life.

Affordable entry level home in highly sought after Surf Beach location. Set on approximately 712sqm, this north facing allotment is primed ready for development.

Comprising four bedrooms one with WIR and ensuite and an open plan layout this solidly built home awaits someone to roll up their sleeves and get to work on transforming this into a forever home for you and the family.

If you're looking to enter the Phillip Island property market then you don't want to miss this wonderful opportunity to land here and then to be able to walk to Surfies Point Beach and listen to the sounds of the sea forever.

Address: 32 Elwood Avenue, Surf Beach  
Contact: OBrien, 03 5952 5100



This much-loved family holiday home of over 40 years, close to Surfies Point, is now ready for its new life.



Comprising four bedrooms one with WIR and ensuite and an open plan layout this is a solidly built home is a fantastic opportunity to enter the Phillip Island property market.

## OBrien Real Estate expands to San Remo

The new era for OBrien Real Estate Judith Wright continues with its overhaul under new management reaching a new stage as they expand to a new office in San Remo.

This new location links the chain between the Cowes and Wonthaggi offices and ensures a broader level of reach and service is available to clients across the Bass Coast.

Jodie Hanssen (Executive Director) who returned to the Bass Coast in late 2022 states, "successful real estate is when the client experience is our driver and at the core of everything we do".

"This has been my focus in every business I have worked in previously in Melbourne and will be our continued focus at OBrien Judith Wright," Jodie said.

"Therefore expansion into San Remo just made sense; we have so many sellers, buyers, landlords, tenants, holiday guests and suppliers collaborating with us on properties in this area, to reduce time and increase convenience and access to services for these people is some-

thing we are pleased to be able to offer."

With a history of helping train and develop some of the real estate industry's top performers (including award winners and high-profile agents featuring on Channel 9's "The Block" and regularly in the Herald Sun and nightly news), Jodie is thrilled to bring her experience back home to the island and work with the local agents as well as recruit and train superstars for the future.

Three recruits already following from past workplaces to continue under her guidance speaks for itself and so the future looks very bright for what she refers to as "Bass Coast's fastest growing agency" at OBrien Judith Wright.

"With access to familiar and trusted faces plus the infusion of new experience and ideas – the San Remo office will fast become a key location for us and our clients.

"The new office will be open for you to visit us shortly, and the team at OBrien Real Estate Judith Wright look forward to you visiting."



OBrien Real Estate Judith Wright is excited to announce that we are officially opening a new office based in San Remo, meaning no matter where you are on Bass Coast, we have you covered!

- ◆ Wonthaggi
- ◆ Cowes
- ◆ San Remo

Are you interested in joining Bass Coasts fastest growing agency?  
Do you want the guidance and support of a proven real estate trainer as your mentor?

Send an email to [operations.cowes@obrienrealestate.com.au](mailto:operations.cowes@obrienrealestate.com.au) today to find out more!

# Surf, style and sophistication

Boasting a remarkable display of style and sophistication, this custom-built home is sure to impress.

The superb property has been perfectly positioned on a generous 793sqm (approx.) block of land taking advantage of stunning northerly views across Swan Bay and rural surrounds. Meticulous attention to detail has been incorporated into the design of the three bedroom, three bathroom home with sleek finishes and high quality fittings encompassed throughout.

Located at the front of the property, the luxurious master bedroom with ceiling fan and bespoke finishes adjoins an incredible ensuite with double vanities, large open shower and separate toilet. Two other bedrooms, both with ceiling fans and built in robes, provide spacious accommodation for all. The fully tiled family

bathroom features single vanity, glass framed shower and custom bathtub.

The focal point of the home is a deluxe open plan living and dining area with polished concrete feature wall, open fireplace and American oak flooring, flanked by vast picture windows and soaring 4.2m ceilings allowing in the natural light and complemented by designer, handmade lighting by Leisa Wharington.

The kitchen offers clean, contemporary class with stone benchtops, custom cabinetry, Miele appliances, two ovens, one a steam oven, induction cook top, well thought out butler's pantry and beautiful spotted gum ceilings.

Dual access is provided from here to the cleverly designed decking spaces and covered alfresco area to be enjoyed amongst the coastal landscapes and showcasing the



Centrally located only a short drive to Cowes and a short walk to Surfies Point, Surf Beach, this modern coastal property offers unmatched comfort and class.

surrounding views. The outdoor spaces also include a fire pit and BBQ nook with stone bench tops.

Other luxury inclusions in the builder's spectacular own home include:

- Second living area with sliding door

- Unique storage space under the home with access to a third bathroom
- Heated flooring in all bathrooms, ducted heating/cooling and ducted vacuum
- Solar panels and solar hot water
- Four car garage



Meticulous attention to detail has been incorporated into the design of the three bedroom, three bathroom home with sleek finishes and high quality fittings encompassed throughout.

Centrally located only a short drive to Cowes and a short walk to Surfies Point, Surf Beach, this modern coastal property offers unmatched comfort and class in which you will instantly feel at home!

Contact us at Stockdale & Leggo Phillip Island | San

Remo today for further information, available via private inspection.

Address: 21 Bayview Avenue, Surf Beach  
Price: \$1,750,000 - \$1,850,000.  
Expressions of Interest closing 5pm 6th February 2023

# It does not get much better than this

With a rural aspect and a walk to the beach this 1600sqm (approx.) allotment is located in the popular Ventnor area of Phillip Island.

This home is perfect for those looking for something special.

Situated close to the beach, the wildlife corridor, Ventnor

Common and the bird sanctuary, this home is an ideal sea change or holiday home away from the hustle and bustle.

When you pull up to this

unique property and drive through the large treed entrance, it feels like you have arrived home. This light filled family home with a new modern feel has been architecturally designed to take advantage of the northerly aspect overlooking your own bush like setting with birds and native animals as your neighbours.

The grand entrance gives you that sense of space which flows through the whole property. This unique home offers large living areas with high ceilings. The first level offers a lock up garage/shed and plenty of undercover parking, two large bedrooms and a study or smaller bedroom and a bathroom.

room and a bathroom.

As you walk up the stairs to the main living area you start to anticipate what the outlook will be like - you will not be disappointed. The extra-large living space is unique with plenty of windows and high ceilings designed to take advantage of the rural feeling this property offers, complete with a gas log fire and reverse cycle heating and cooling unit to keep you comfortable through the year.

The Hostess kitchen is large and offers a walk-in pantry, stone benches and direct access to the large outdoor living space.

The master bedroom is located on this level and is

tucked away for privacy yet enjoys the rural feeling of the property. A second bathroom is located on this level with hidden laundry facilities and an ironing centre.

If you are looking for a home with native gardens, a rural feeling with plenty of room for the boat and caravan and within a one-minute walk to the beach, call to arrange a private inspection.

Situated on a large (approx.) 1600sqm allotment, possible subdivision (STCA).

Call Alex Scott & Staff today on 5952 2633 to arrange your private inspection.

Features: three bedrooms plus study, two bathrooms, three car undercover

**Stockdale & Leggo**  
We see more than property

## THINKING OF MOVING ON OR MOVING IN?

Let our local team of knowledgeable professionals help you on your real estate journey.

Simply relax and enjoy the best of summer.

Call 03 8583 4701 to contact your local expert today.

**Stockdale & Leggo Phillip Island | San Remo**

P 03 8583 4701

A 45 Thompson Avenue, Cowes VIC 3922

A 3/107 Marine Parade, San Remo VIC 3925



Jaime Morris  
0408 367 310



Emma Wouters  
0493 117 200



Camille Morris  
0417 181 961



Natalie Archer  
0435 073 205



Beth Lynch  
0493 603 197



Sarah Foster  
03 8583 4701



This light filled family home with a new modern feel has been architecturally designed to take advantage of the northerly aspect overlooking your own bush like setting.



The extra-large living space has multiple windows and high ceilings designed to take advantage of the rural feeling this property offers, complete with a gas log fire.



The Hostess kitchen is large and offers a walk-in pantry, stone benches and direct access to the large outdoor living space.

**KEEP IT SIMPLE THIS SUMMER**

Here comes the sun. Let's make the most of it.

**ALEX SCOTT  
AND STAFF**

Est. 1886

**143 PYRAMID ROCK ROAD, VENTNOR**



- 'Kurana' – one of the districts finest farms set on 156 acres (approx.)
- Four-bedroom home with an additional two bedroom cottage
- First time offered in 80 years

**CONTACT AGENT**

**10 GLAMIS ROAD, VENTNOR**



- Secluded 3.7 acres (approx.) with sweeping views of Bass Strait
- Well fenced for horses or small number of livestock
- Double garage, shedding & workshop
- 5 bedrooms/2 bathrooms/8 cars

**\$2,600,000 to \$2,800,000**

**216 COWES-RHYLL ROAD, RHYLL**



- Totally self-sufficient, 7-star energy rated home.
- Set on 4.48ha (approx.) with sweeping views of Westernport Bay and French Island
- 3 Bedrooms/1 Bathroom/4 Cars

**\$3,100,000**

**3 GLAMIS ROAD, VENTNOR**



- Breathtaking location, directly above one of the Island's most spectacular surf breaks with uninterrupted views of Berry's Beach and surrounding headlands
- Tennis court & ornamental lake situated on approx. 2.5 acres
- 3 Beds/2 baths/2 cars

**EXPRESSION OF INTEREST**

**18 DOUGLAS ROAD, COWES**



- What a location! One street from main shopping strip
- Set on a huge 1949m<sup>2</sup> allotment
- 3 bedrooms/1 bathrooms/2 cars

**\$1,500,000**

**43 BATMAN STREET, SURF BEACH**



- Located on The Esplanade at Surf Beach with superb ocean views from Cape Woolamai to Pyramid Rock
- Massive 3 bay garage with entry to the home
- 3 Bedrooms/1 Bathroom/4 Cars

**\$1,950,000 to \$2,100,000**

**25 HOPE WAY, COWES**



- Situated in Shearwater Estate, a short walk to Cowes Golf Club & Silverleaves Beach
- 6.0-star energy rated brick home
- 4 bedrooms/2 bathrooms/2 cars

**\$960,000**

**10 DUNVEGAN CRESCENT, SURF BEACH**



- Historic homestead with amazing water and rural views
- Set on an impressive 1956m<sup>2</sup> allotment with established gardens
- 4 bedrooms/2 bath/3 car

**\$2,000,000 to \$2,100,000**

**3 HEYLEY AVENUE, VENTNOR**



- Completely renovated on a large allotment only 3-minute stroll to the beach
- Fully fenced and gated with established gardens
- 3 bedrooms/2 bathrooms/2 cars

**\$980,000 TO \$1,050,000**

**9 WALDORF ROAD, COWES**



- Situated in the family friendly Whytesands Estate
- Open plan living with doors leading out to a covered alfresco area
- 3 bedrooms/2 bathrooms/2 cars

**\$890,000**

**4/11 FOWLER GROVE, NEWHAVEN**



- Quality brick townhouse in beautiful Newhaven
- Open plan living with north facing undercover courtyard
- 3 bedrooms/1 bathroom/1 car

**\$650,000**

**57 GRAMPIAN BOULEVARD, COWES**



- Situated in the Whytesands Estate with open plan living
- Large alfresco area with Zip Trak café blinds and wood heater
- 4 beds/2 baths/2 cars

**\$838,000**

**104 BACK BEACH ROAD, SUNSET STRIP**



- Walking distance to Smiths Beach, Newhaven College and short drive to Grand Prix Circuit
- Double storey home with bright, airy open plan living
- 3 bedrooms/2 bathrooms

**\$820,000 TO \$860,000**

**603 VENTNOR BEACH ROAD, VENTNOR**



- Situated on a large 1600m<sup>2</sup> (approx.) allotment
- Short 1 minute stroll to the beach
- 3 bedrooms/2 bathrooms/3 cars

**\$1,500,000 TO \$1,600,000**

**16 ISLAND CRESCENT, COWES**



- Set on a generous allotment in a quiet area of Cowes just a short stroll to the beach
- Large north facing undercover deck
- 4 bedrooms/1 bathroom/1 car

**\$750,000 TO \$775,000**

**21 GROSSARD POINT ROAD, VENTNOR**



- Double storey with amazing water views
- Downstairs has a separate entrance with lounge, bedroom & bathroom for extra guests
- 3 bedrooms/2 bathrooms

**\$890,000 TO \$930,000**

**9 BLUE GUM COURT, COWES**



- Centrally located brick home in a private court
- Fully fenced and landscaped yard
- 3 bedrooms/2 bathrooms/2 cars

**\$820,000 TO \$840,000**

**4 CRAFTERS CRESCENT, VENTNOR**



- Classic seaside cottage on a large 950m<sup>2</sup> (approx.) allotment
- Short stroll to beautiful Ventnor Beach
- 2 bedrooms/1 bathroom

**\$795,000**

**IT'S BEEN  
A BUSY JANUARY  
AND WE HAVE  
QUALIFIED BUYERS  
WANTING MORE.  
TALK TO US TODAY!**

**Greg Price  
0419 337 441**

**Brian Silver  
0407 347 509**

**Maree Malloy  
0408 316 715**

**Chase Watters  
0423 272 819**

**113a Thompson Avenue, Cowes  
5952 2633 ALEXSCOTT.COM.AU**

# Island HOME

YOUR PHILLIP ISLAND AND SAN REMO PROPERTY GUIDE



In the hills of Woolamai, this stunning five-acre property is a once-in-a-lifetime opportunity to create the ultimate lifestyle with a north facing, two storey house nestled amongst beautifully landscaped gardens.

## Fall in love with the lifestyle

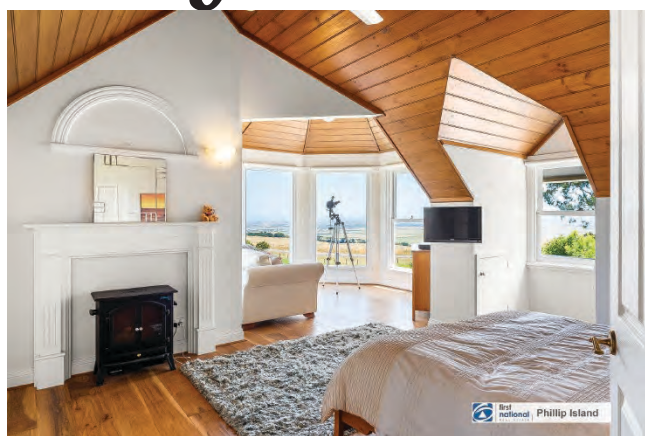
In the hills of Woolamai, this stunning five-acre property is a once-in-a-lifetime opportunity to create your own coastal/country lifestyle. Every room in the house has a view of surrounding farmlands or across to Westernport Bay, French Island and Bass Strait. A whisper quiet rural location, the north facing, two storey house is nestled amongst beautifully landscaped gardens. You'll feel a million miles from the rest of the world, yet Bass Coast's beaches, San Remo and Wonthaggi are all just a short drive away.

Ideal for growing families and entertainers, the four-bedrooms all have direct bathroom access while a self-contained guest area is complete with its own kitchenette, bathroom and balcony.

With gas underfloor heating and reverse cycle air conditioning, you'll be comfortable all year round and the property also includes three spacious living areas and undercover alfresco dining.

The three-car garage and expansive shed offers plenty of storage and the surrounding paddocks are fully fenced.

You can relax in the superb garden, or hone your wine-making skills in the property's established vineyard.



The four king sized bedrooms all have views of surrounding farmlands or across to Westernport Bay.

Houses in this unique area are rarely on offer, and expressions of interest are invited.

Come and inspect your dream home and create your own coastal/country lifestyle.

### Features:

- Grand design layout on five acres
- Four king sized bedrooms all with direct bathroom access
- Views from every room within the house
- Three spacious living zones
- Soaring roof lines with exposed beams
- Large outdoor alfresco

- area to entertain
- Gas floor heating and wood fire
- Reverse cycle heating and cooling
- Large shedding (12 x 8 metres)
- Three bay carport
- Established vineyard
- Fully fenced paddocks
- Huge water supply – 30,000 litre water tank
- Established gardens

Address: 599 Densleys Road, Woolamai  
Contact: Kendall O'Garey, First National Real Estate in Cowes on 0410 595 130

## Steph's style guide

When Steph Thornborrow styles a home, people fall in love with it.

Through her Pint Size Property Styling business, which has been operating on Phillip Island for three years, Steph takes a blank canvas – houses to be put on the market for sale – and turns them into a must-have home for would-be buyers.

"I take an empty house and from scratch provide an aspirational lifestyle through interior styling," says the Cowes mother-of-three.

"People want to see the potential in a home they're going to buy. Research shows homes that are staged sell faster and also sell for more.

"You only get one go at making a first impression and so if you want people to fall in love with a space, it's a good idea to style it."

Given she lives and works on the island, Steph describes her staging style as "contemporary, relaxed coastal", able to make homes "lighter, brighter and larger".

"I use lots of natural textures and neutral colours to appeal to a broad audience, also working around the style of the house.

"It's about showcasing a space to the best of its ability."

For 26 years Steph worked in TV production, especially commercials such as ANZ Bank, and Gazman, with a general love of all things creative.

Most recently her creative eye was showcased in the coffee table cookbook, *Over the Bridge*, capturing beautiful images of farms and restaurants across Phillip Island.

Steph says staging homes is a concept that has been popular in Melbourne for years, and while there are local interior designers, there was a gap in the market for real estate staging on the island.

### Coastal chic

At the rear of her home she has a shed brimming with furniture, in addition to three storage units, the result of constantly collecting targeted items. She has about 10 sofas, 20 beds, artworks, rugs and a beautiful array of pure linen bedding because "I love



Steph Thornborrow's Pint Size Property Styling business stages Phillip Island homes on the market for sale, with research showing staging helps a home sell faster and for more. Photo: Claire Davie.

dressing beds".

Steph will initially visit a home, take photos and send through a proposal to a vendor before taking a day to move in furniture and style, working with both real estate agents and sellers.

A sale campaign lasts for six weeks and starts at about \$3000.

Steph has completed a floristry course and is a big believer in using botanicals to bring a styling project to life. She offers a free service to update foliage every two weeks as part of the package.

Ray White Phillip Island agent Bec Anderson agreed styling increases a property's saleability and helps

photography.

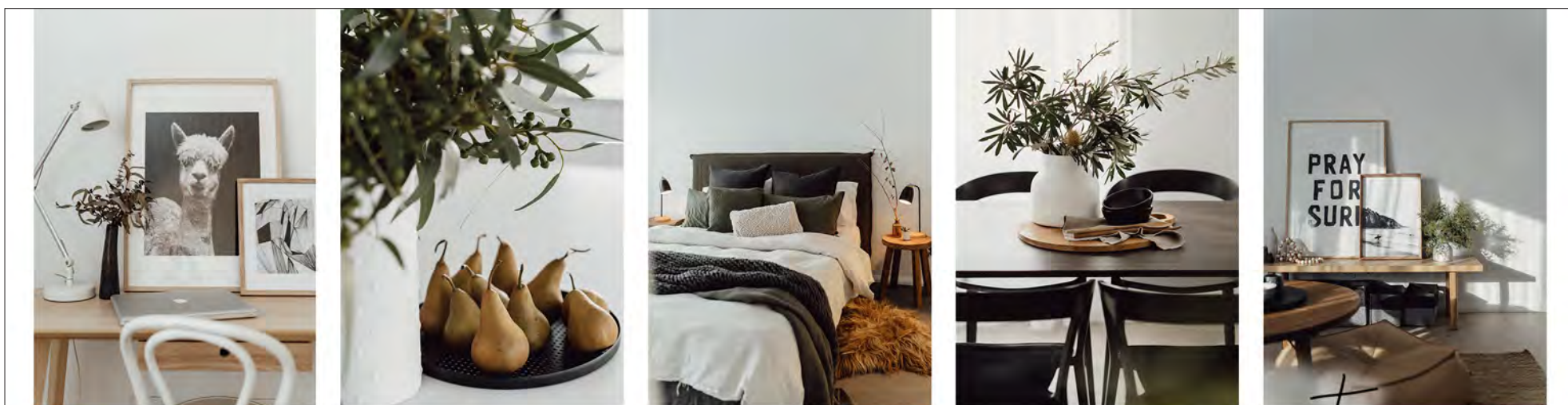
"Steph's eye for detail has helped transformed many of my listings, and I believe has assisted in better sale prices for the property owners," Bec says.

With rising interest rates, the frantic pace of recent property sales has slowed, and houses are no longer being snapped up within days of being listed.

Steph said staging now was paramount, giving an advantage over homes that aren't styled.

"It's more important than ever for more than one buyer to fall in love with your property."

Details: [pintsize.com.au](http://pintsize.com.au)



## Want to sell your home faster and for more?

Pint Size Property Styling can help transform your home into a beautiful and functional space that prospective buyers won't be able to resist. We call it the real estate equivalent of love at first sight! Prices start at \$3,000. Contact Steph on 0412 031 035

pint size  
PROPERTY STYLING





**FALL IN LOVE WITH THE LIFESTYLE**



**FOR SALE**

599 DENSLEYS ROAD WOOLAMAI  
4 BED /3 BATH /6 CAR  
**EXPRESSIONS OF INTEREST**

This stunning property is set over 5 acres and designed for growing families and entertainers, an easy drive to both San Remo or Wonthaggi and Bass Coast beaches. The home captures all-natural light and has a north facing orientation, and captures extensive views across Westernport Bay, French Island, Bass Strait and surrounding farmland. You will appreciate your unique surroundings and enjoy the benefits of having no neighbours.

**ADDITIONAL FEATURES**

- Grand design lay out on 5 Acres
- 4 King sized bedrooms all with direct bathroom access
- Views from every room within the house
- 3 large spacious living zones
- Soaring roof lines with exposed beams
- Large outdoor alfresco area to entertain
- Gas floor heating & wood fire
- Reverse cycle heating and cooling
- Large shedding 12M by 8M
- 3 Bay carport
- Comes complete with established vineyard

- Fully fenced paddocks
- Huge water supply 30,000 lite water tank
- Established gardens

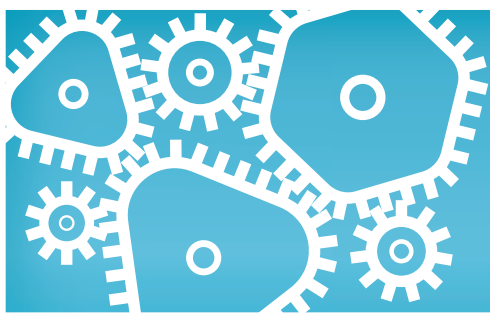


**KENDALL OGAREY**  
0410 595 130

**CONTACT US FOR A FREE NO OBLIGATION MARKET APPRAISAL TODAY**

56-58 THOMPSON AVENUE, COWES  
PH: 03 5952 3922

[WWW.PHILLIPISLANDFN.COM.AU](http://WWW.PHILLIPISLANDFN.COM.AU)  
[INFO@PHILLIPISLANDFN.COM.AU](mailto:INFO@PHILLIPISLANDFN.COM.AU)



# Business Guide

LOCAL TRADES AND SERVICES

## AIR CONDITIONING

**ALWAYS COOL**  
AIR CONDITIONING  
HEATING & COOLING SPECIALISTS  
1800 931 631  
www.alwayscoolair.com.au

## CLEANING

**eighth element**  
www.eighthelement.com.au  
• Airbnb & accommodation cleaning  
• Linen service  
• Commercial cleaning  
• Vacate cleans  
Sharon Elliott  
0421 665227  
email: info@eighthelement.com.au

## CONCRETER

**TIM NEWMAN**  
**TNC**  
**CONCRETING**  
• Exposed aggregate • House slabs  
• Driveways • Footpaths • Sheds & garages  
• All concreting needs  
Tel/Fax 5956 8791  
RMB 2180 Ventnor 3922 E: newman@waterfront.net.au  
**0419 312 805**

## HANDYMAN

**SJC HOME MAINTENANCE**  
Qualified Tradesman with over 35 years experience  
Call for a Free Quote  
No job too small  
Quality work at a great price, Fully insured  
Call Mick 0424 414 495  
www.sjchomemaintenance.com.au

## AIR CONDITIONING

CLAIM UP TO **\$1000 CASH BACK!**  
WITH OUR **HEATING & COOLING**  
AUTHORISED GOVERNMENT REBATE  
**CITY TO COAST AIR**  
WONTHAGGI  
Your split system & ducted experts!  
Shop 1/13 Inverloch Rd. Wonthaggi  
**0400 001 465**  
\*Government rebate T&C's apply

## CARAVAN REPAIRS

**REPAIRS & DETAILING OF CARAVANS & MOTORHOMES**  
**SOUTH GIPPSLAND**  
**CARAVAN REPAIRS**  
Glen Marshall  
**0405 415 133**  
• ALL MAKES AND MODELS  
• CUT AND POLISHING  
• SERVICING SOUTH GIPPSLAND

## DECKS & VERANDAHS

**ISLAND DECKS**  
Specialists in all types of decks and veranda's  
REGISTERED Building Practitioner  
John Johnston 0414 714 179

## LAUNDRY SERVICES

**ISLAND PREMIUM LAUNDRY**  
Island Premium Laundry offer all your laundry needs from general house washing to your pet beds or blankets. We also wash doonas, pillow top protectors.  
To contact us or book in your laundry needs, call 0417 150 566 or email islandpremiumlaundry@gmail.com

## AIR CONDITIONING

**COASTAL**  
REFRIGERATION & AIR-CONDITIONING  
**DAIKIN**  
03 5678 5190  
office@picra.com.au  
Coastal Refrigeration and Airconditioning  
AUS1426  
COMMERCIAL & DOMESTIC SERVICE, INSTALLATION, MAINTENANCE AND SALES

## DEMOLITIONS

• DEMOLITIONS • EXCAVATIONS  
• BOB CAT • TREES • CONCRETE CUTTING  
• BULK BINS SUPPLIED • HIRE OR CONTRACT  
• EXCAVATORS - 0.8, 5 TON, 15 TON & 20 TON  
**FREE QUOTES 0416 705 154**  
**BRICE CONTRACTING COWES**

## LAWN MOWING

**Dave Costello**  
For all your lawnmowing, landscaping & rubbish removal  
Call for a free quote  
**0411 175 957**

## AIR CONDITIONING

**southcoast air**  
Air conditioning & refrigeration  
Cooling & heating specialists  
Split system sales & complete installation  
Service, repairs Electrical contractor  
**0402 044 377**  
Dave Miller PIC. 43216  
L109866 REC26099

## CONCRETER

**CONCRETE AND EXCAVATION SERVICES**  
**JAK**  
CONCRETE & EXCAVATION  
• Exposed Aggregate  
• Slabs & Foundations  
• Driveways & Paths  
• Commercial Concreting  
• Excavation  
• Landscaping  
• Retaining Walls & MUCH MORE  
CALL FOR A FREE QUOTE!  
Adam 0423 647 805 Nancy 0402 930 876

## EARTHMOVING

**Bobcat/Excavator Tipper Hire**  
All aspects of earthmoving, driveways, draining and landscaping  
Rubbish removal  
**0418 418 615**  
Servicing all Phillip Island areas  
**Ray's Skip Hire + Earth works**

## LAWN MOWING

**Jim's Mowing**  
Need it Done? Jim's the One  
RISK FREE  
Lawn mowing, gardening, pruning, hedging, rubbish removal, gutter cleaning, weeding, mulching, odd jobs  
www.jims-mowing.com.au  
Call 131 546  
✓ FREE QUOTES  
✓ Fully insured  
✓ Police checked  
✓ OH&S compliant  
✓ All work guaranteed

## BLINDS/AWNINGS

**Creative Blinds & Awnings**  
FREE MEASURE & QUOTE  
Mobile Showroom  
Peter: T/F: 5952 5092 M: 0417 358 650

## CONCRETER

**MARK ATLEY CONCRETING** EST.1983  
**'THE DRIVEWAY SPECIALISTS'**  
• Exposed/Patterned  
• Coloured or plain  
• Drainage solutions  
31 Reid Street, Rhyll. 3923  
Ph: 0418 105 262

## ELECTRICIAN

**JACKSON ELECTRICAL & AIR CONDITIONING**  
• Reliable & fully insured  
• Split system installers  
• All types of electrical services  
• Air conditioning sales and service  
• TV Antenna & data  
• Free quotes  
• Hot water systems  
• Ovens and cooktops  
CALL MICHAEL 0427 633667  
CAPE WOOLAMAI REC 17893 LIC. 48834

## LAWN MOWING

**Phillip Island LAWN & GARDENS**  
**0400 500 415**

## BLINDS & CARPET

A: 155 Thompson Avenue, Cowes  
T: 5952 1488  
**south coast furnishings**  
SOUTH COAST FLOORING XTRA  
W: southcoastfurnishings.com.au  
E: sales@southcoastfurnishings.com.au

## CONCRETER

**RAY MATTOCK CONCRETING AND EXCAVATIONS**  
• Exposed aggregate paving  
• Coloured - Slate - Brick paving  
• House slabs - Garages  
PH: 5952 3853 FAX: 5952 5103  
Mob: 0418 560 202

## GAS SUPPLIERS

**WRIGHTON GAS SUPPLIES**  
Agency for **ELGAS**  
Servicing Phillip Island & San Remo  
For all household gas supplies  
**Bruce Wright**  
Tel: 5952 3252 Mobile 0409 164 441

## MARINE MECHANIC

★★★ **TOPWATER MARINE** ★★★  
0402 761 692  
• Inboard / outboard motor servicing and repairs  
• Accessory installations and electrical work  
• Trailer servicing and modifications  
• Anchor winches • Boat detailing • Insurance work  
www.topwatermarine.com.au | topwatermarine@yahoo.com  
64 Dixon street, Inverloch

## ADVERTISING

To advertise in the **Business Guide**  
CONTACT JANE ON 5952 3201  
OR EMAIL ADS@PISRA.COM.AU

## CONCRETER

**NEW WAVE CONCRETING**  
**0402 454 742**  
Luke Hinrichs

## GUTTER CLEANING

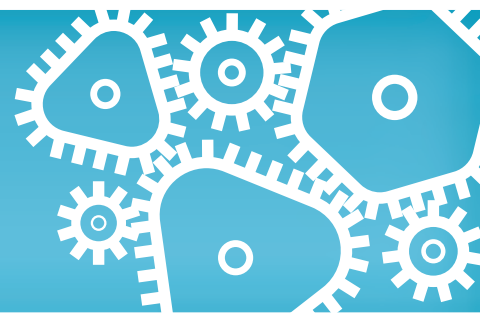
**GUTTER-VAC**  
Clean. Safe...Easy  
Vacuum gutter cleaning, gutter guard, solar panel cleaning, ceiling cavities cleaning.  
**0427 393 291**  
swgippsland@guttervac.com.au

## PAINTER

**BJBM**  
Painter & Decorator  
**0408 888 009**  
Free Quote, servicing Bass Coast, Mornington and South East Suburbs, over 30 years experience, residential and commercial painting services.  
Contact Brett Moss.

# Business Guide

LOCAL TRADES AND SERVICES



## PLASTERING

**WONTHAGGI plaster**  
& Construction Supplies

T: 5672 1535 F: 5672 3786  
42 INVERLOCH ROAD, WONTHAGGI  
wonthaggiplaster.com.au

CEMINTEL GYPROCK CSR NATIONAL MASONRY EARTHWOOL Autex

## POOLS

**SPARKLING CLEAR**  
Pool Service

Gary Gaskin  
0407 053 311 • gary.gg@bigpond.com

## SOLAR

**islandenergy**

**SOLAR - BATTERIES - OFF GRID**

1300 534 110

## TREE SERVICES

**SL Tree Care**  
NO JOB TOO SMALL

- Qualified
- Storm Damage
- Tree Maintenance
- Lawn Mowing
- Tree Removal
- Garden Maintenance
- Fruit Tree Pruning
- FREE QUOTES

Call Shaun **0423 910 554**

## PLUMBING

**brenex** 24 hours 7 days  
plumbing & gasfitting

- Roofing - Gas - Water - Hot Water - Pumps  
- Water Tanks - Sewers & Storm water - Blockages

Brendan Duncan 0418 342 649  
Email | brendan@brenexplumbing.com.au

- Pool Maintenance
- Tiling & Coping Repairs
- Equipment Replacement
- Renovations

## STEEL

**ISLAND STEEL**

Steel fabrication • Stainless/Aluminium fabrication  
Steel sales cut to order • Sheetmetal fabrication  
Guillotine and folding • Gal lintels / Retaining wall posts  
Truck mounted CRANE HIRE • Genie lift and generator hire

Call for a quote WE DELIVER

14-16 The Concourse, Cowes 5952 1432  
Email:sales@islandsteel.com.au

## TREE SERVICES

**SILVERBACK TREE SERVICES**  
Specialising in tree Pruning & Removal

## PLUMBING

**CHUNKS PLUMBING**

All types of plumbing  
24 HOUR SERVICE Lic # 48411

- Gas • Hot water units
- Sewers, storm water, blockages

A local, reliable business

Daniel Campbell - 0438 520 546  
chunksplumbing@waterfront.net.au

ADVERTISING

To advertise in the  
**Business Guide**

CONTACT JANE ON  
5952 3201 OR EMAIL ADS@PISRA.COM.AU

Competitive rates Firewood  
Total tree removal Storm cleanup  
Mulch sales Lot clearing  
Hedging Hazardous limbs  
Pruning

Call now for a free quote  
**0491 032 999**

## PLUMBING

**Same Day Plumbing Service**

Morris Brothers  
Lic 43482

Free Quotes - Pensioner Discounts  
**0403 116 435**

ADVERTISING

To advertise in the  
**Business Guide**

CONTACT JANE ON  
5952 3201 OR EMAIL ADS@PISRA.COM.AU

## TREE SERVICES

**SOUTHERN ARBORISTS**  
Art & Science.  
Professional Tree Services

Nicholas Harrison - Arborist  
Ass. Dip. App. Sci. (VCAH Burnley 88)  
soararsc@gmail.com  
Phillip Island Mobile 0490 859 721

- Free quotes - Fully insured - Full clean-up -  
Specialist in pruning and tree preservation

Hedges, Firewood, Stumps, Fire Safe

## POOL INSPECTIONS

Keeping your family safe with compliant pool fences

**Pool Barrier Inspections**

CALL PETER FOR AN APPOINTMENT TODAY  
**0427 352 972**

## RESTUMPING

**KEANE & SON**  
House Restumping & Levelling

Paul Keane  
0427 080 309

keanesrestumping@outlook.com  
PO Box 696, Wonthaggi, Vic, 3995

## STORAGE

**Island Secure Storage**

Large & Small Units  
Boxes & Packaging  
Security Monitoring  
On Site Manager  
24hr / 7 day access

Phone **0400 214 446**  
4 Industrial Way, Cowes 3922  
Alt Ph: 5952 1432 Fax: 5952 5690  
Email: storage@islandsteel.com.au  
Web: www.islandstorage.com.au

## TYRES AND WHEELS

**PHILLIP ISLAND TYRE SERVICE CENTRE**

3 HARVEY DRIVE  
COWES

03 59 523 305

PHILLIPISLANDTYRESC.COM.AU  
HELLO@PHILLIPISLANDTYRESC.COM.AU

## PLUMBING

24/7 EMERGENCY SERVICE PHILLIP ISLAND BASS COAST

**VELCO**  
PLUMBING & GAS  
CALL 0418 323 101

## ROOFING

**SOUTHERN METAL ROOFING**  
Metal Roofing Specialists

- Domestic & Commercial • Repairs
- New Installation & Renewals • Maintenance
- Fascia, Gutters & Downpipes
- Aluminium Gutter Guard • Metal Wall Cladding

M: 0431 044 485 E: chrissavona@yahoo.com.au

## TILING/LANDSCAPING

**EC Eleganz Constructions**

- Rendering
- Bathroom Renovations
- Landscaping
- Pool & Spa And Tiling
- Paving & Coping
- Floor & Wall Tiling

0410 017 611  
eleganzconstructions.online

## WINDOW CLEANING

**WINDOW CLEANING**

0409 946 839

Glassed Out Window Cleaning

Fully insured

## PLUMBING

**RELIABLE PLUMBER**  
Fast Response at an honest price

Tappy the Plumber  
0427 776 808

- NO CALL OUT FEE
- Leaking taps & toilets
- Hot water systems replaced
- Vanities & water
- Filters installed
- Gas fitting
- General plumbing

email: tappy@waterfront.net.au  
Fully Licenced & insured. All work guaranteed

## ROOF REPAINTER

**COWES ROOF REPAINTS**

Metal & Tile  
Roof Restoration

0431 992 027  
julianbird8@gmail.com

## TIMBER & TANKS

**VAN STEENSEL TIMBERS**

WE KNOW  
TIMBER, HARDWARE,  
RURAL SUPPLIES  
& BUILDING MATERIALS

Phone 03 5678 8552  
www.vansteenseltimbers.com.au  
Cnr Bass Hwy & Dalyston-Glen Forbes Road, Grantville

## WINDOW CLEANING

We promise sparkling windows every time!

PREMIER WINDOW CLEANING

Residential & commercial work  
Call Maria 0422 258 948  
Email: hansamaria39@gmail.com



## DEATHS

**ANDREATTA, Janet Ellen:**  
05/03/1936 - 20/01/2023

Loved wife of Tony (Dec.), much loved mother and mother in law to Neil & Janet (Dec.), Mark & Marjory (Dec.), Sharon & David.

Adored Nana of Jason, Jarrod, Kylie, Bianca (Dec.), Jade, Rhys, Emma & Amanda. Loving Great Nana of 8.

Now reunited with her beloved Tony.

Forever in our hearts.

**BAYLISS, Elvie Maud (nee Matthews):**  
19/03/1927 - 21/01/2023

Passed away peacefully at BUPA - Berwick.

Loved and loving wife of Alfred (dec.)

Mother of Paula, Lesley, Terry, Teresa and partners.

Grandmother and Great-Grandmother.

**BUCK, Pam:**

In loving memory of Pam Buck who passed away on 8.1.2023. Dearly missed and forever in our hearts.

Alan, Adrian, Jose, Paul, Deb, Albie, Maisie and family.

**COURTIS, Shirley Maree (nee Hewitt):**  
20/02/1925 - 16/01/2023

Passed away peacefully at Melaleuca Aged Care.

Loved and loving wife of Arthur (dec.)

Mother of Michael (dec.) & Carol, Stephen (dec.), Mark & Janine.

Grandmother to Ben & Lauren, Leanne, Kaytlin, Steve & Grace.

Great-Grandmother to Archie, Summer & Charlotte.

"Sadly missed and loved always"

**ELLIOT, Linda:**  
Died 16.1.23

Wife of Justin,

Mother to Jessica and Grace.

Will be sadly missed.

**ELLIOTT (nee Tims) Linda June:**

Loving wife and best friend of Justin.

Loved Mum to Jess.

Best Girl to Bazza the dog.

Sister to Simon (dec.) and Jane.

Sister-In-Law to Gus.

Aunty to Simon and Andrew.

"Blessed by friendships"

## FUNERALS

**ANDREATTA:**  
A Memorial Service to Celebrate the Life of Mrs. Janet Andreatta will be held at The San Remo Bowls Club, Wynne Avenue, San Remo on MONDAY (Feb. 6, 2023) commencing at 11:00am.

Privately Cremated

Handley & Anderson

The Funeral Service for **Mrs Linda June Elliott (nee Tims)** will be held on TUESDAY (January 31, 2023) commencing at 11:00am at the Handley & Anderson Chapel, 3085 Loch-Wonthaggi Road, Wonthaggi.

A Private Cremation will be held.

Handley & Anderson

## FOUND

**BUNCH OF KEYS**  
Keys include car key etc Found on Red Rocks Beach on Sunday 8.45am January 22nd.

Taken to Cowes Police Station.

## IN MEMORIAM

Celebrating the life of


## Jo Ablett

06.05.56 - 15.01.23



2:30pm Sunday 5th February  
Newhaven College Middle School  
1770 Phillip Island Rd. Rhyll VIC 3923

Refreshments provided - Wear bright colours!



San Remo Primary School staff and community would like to express our deepest sympathy's on the passing of Jo Ablett.

Jo was a much loved, respected and cherished member of San Remo Primary School.

Our love and heartfelt condolences are with Dave, Zac, Carly, Dion and Family.

Treasured Memories, always remembered.

## GARAGE SALES

**AUSSIE GOLF RANCH**  
627A Settlement Rd., Cowes.

Sat 28 & Sun 29 Jan.  
10am - 2pm

Moving out sale.

Lots to go.

Discounted golf gear.

Pro Shop also.

**COWES**  
14 Scenic Drive

Sat 28th Jan 9am - 2pm

Household, shed, camping, books, vinyl records & lots more.

**NEWHAVEN**  
27 Cleeland St.

Sat 28 Jan at 9am

Furniture, homewares, clothing, boating & camping items.

**SUNDERLAND BAY**  
8 Anglers Rd.,

28th January from 8.30am-2.00pm

Lots of car parts, tools, collectables and books etc.

## GARAGE SALES

**SUNSET STRIP**  
9 Galleon Crescent,  
Sat 28 from 9 - 3.

Vintage, Retro, Collectables

**WIMBLEDON HEIGHTS**  
66 Ventnor Beach Rd.,  
Saturday 28th & Sunday 29th January

8am - 1pm each day.

Household furniture, bric-a-brac and men's stuff.

## SITUATIONS VACANT

**CLEANER**  
Seeking a cleaner for regular weekly duties at an established private home, no paying guests. Please provide Expressions of Interest to Box 619 COWES 3922

## PUBLIC NOTICES

**Phillip Island RSL Community Men's Shed**

**REPAIRS AND RESTORATIONS**

From timber to metal - small to large projects. Reasonable prices.

Open Tuesday, Wednesday & Thursday 9am to noon.

Contact **Bob Woods, 0417 149 268**



The Phillip Island & San Remo Advertiser is bound by the Standards of Practice of the Australia Press Council. If you believe the Standards may have been breached, you may approach the newspaper itself or contact the Council by email [info@presscouncil.org.au](mailto:info@presscouncil.org.au) or by phone (02) 8261 1930. For further information see [www.presscouncil.org.au](http://www.presscouncil.org.au)

**1 in 5 people in Australia will experience depression.**

Find out more at [www.beyondblue.org.au](http://www.beyondblue.org.au) or call 1300 22 4636.



Initiative of Phillip Island Masonic Lodge


## PUBLIC NOTICES

## COWES CARNIVAL

*would like to inform locals and residents that on*

### Australia Day, Thursday, January 26, 2023

*at approx. 9pm there will be a fireworks display. Animals may be distressed so make sure your cats, dogs and other pets are safe indoors or secured.*



## Bass Coast Health

### ANNUAL GENERAL MEETING

**Thursday, February 16, 2023, 1.30pm - 3pm**  
(afternoon tea to follow).

Marquee in Ambulatory Care carpark, Wonthaggi Hospital, 235 Graham Street, Wonthaggi.

Members of the public are invited to attend.

## SITUATIONS VACANT

## Cleaners Required!

With the largest holiday rental portfolio on Phillip Island and with the recent addition of another office in San Remo...

We are seeking cleaners or cleaning team to clean our holiday accommodation homes before and after bookings.

If this sounds like something you may be interested in please email: [operations.cowes@obrienrealestate.com.au](mailto:operations.cowes@obrienrealestate.com.au)



## CLEANER(S) REQUIRED


EXPRESSION OF INTEREST

We are seeking expressions of interest from a professional and dedicated Cleaning team to provide general cleaning duties to a multi unit complex in Cowes. Duties will include a mixture of tasks to be performed primarily on two weekday mornings.

The successful applicant will be required to commence in March 2023. A full comprehensive task list will be available to those who express interest, with quotes and interviews scheduled for February 2023.

Expressions of interest are due by 27/1/23 emailed to [stevenson-peter@hotmail.com](mailto:stevenson-peter@hotmail.com)

## PUBLIC NOTICES



PHILLIP ISLAND HOMES FOR THE AGED ASSOC INC

### MELALEUCA SUITES AND MELALEUCA PLACE - RETIREMENT LIVING INDEPENDENT LIVING UNITS

Two beautiful single bedroom Units in the heart of Cowes for Independent Living.

The Suites complex has a spacious meals & entertainment wing, undercover parking and lovely grounds and gardens.

The Place has a garage attached and lovely grounds and gardens.

Walking distance to Cowes CBD.

Refundable Entry Contribution of \$140,000.

Fortnightly Service Fee in the Suites \$660 per fortnight (including two meals per day, electricity, gas, rates, insurance, and internet).

Fortnightly Service fee in the Place \$322.55 per fortnight (including land and water rates).

For further information or to book an inspection please call Nina on 03 5952 3266 or email [nina@phillipislandhomesfortheaged.com.au](mailto:nina@phillipislandhomesfortheaged.com.au)

## SITUATIONS VACANT



### WESTERNPORT HOTEL REQUIRES:

**KITCHENHAND / DISHY (12-40 HRS/WK)**  
**BAR STAFF (12-30 HRS/WK)**  
**WAIT STAFF (12-30 HRS/WK)**

Apply to [nick@thewesternport.com.au](mailto:nick@thewesternport.com.au) or in person

## SITUATIONS VACANT

### Phillip Island Grand Prix Circuit

### FOOD & BEVERAGE EVENT STAFF

Casual positions available

Come and join the Catering team and work in the hub of the action and experience the atmosphere of the international world class venue.

We require casual staff for the Superbike World Championship, held 24-26 February 2023 with the following experience:

- Counter Staff
- Barista Experience
- Food Prep/Kitchen Hand
- Chef / Cook

Please email resume and cover letter to [emma.nash@phillipislandcircuit.com.au](mailto:emma.nash@phillipislandcircuit.com.au)



Tel: 5952 2710  
[www.phillipislandcircuit.com.au](http://www.phillipislandcircuit.com.au)  
[e:info@phillipislandcircuit.com.au](mailto:e:info@phillipislandcircuit.com.au)



PHILLIP ISLAND HOMES FOR THE AGED ASSOC INC  
MELALEUCA AGED CARE

### SITUATIONS VACANT

### KITCHEN/CLEANING STAFF

Permanent Part Time 30hrs per fortnight

### ENROLLED ENDORSED NURSE FOR LEAVE POSITION

- AM, PM & Night Duty Shifts.

Up to full time hours for the right applicant. With view to permanent position.

Application in writing emailed with CV to Hayley: [hayley@phillipislandhomesfortheaged.com.au](mailto:hayley@phillipislandhomesfortheaged.com.au)



# Bass Coast businesses get \$135,000 shopfront boost

Bass Coast Shire Council announced \$63,000 worth of shopfront upgrades to 34 local businesses across the shire, in the latest round of its Shopfront Improvement Rebate program.

Sixteen businesses across Phillip Island and San Remo were included in the latest round.

The aim of the grants is to revamp town centres by improving their appearance, attracting customers and increasing economic growth.

The grants of up to \$2000 enable businesses to undertake vital maintenance and modernisation, including new external signage, painting, minor repairs and lighting upgrades.

For the 2022 Shopfront Improvement Rebate round two program, Council said it received 55 high-quality applications from a wide range of businesses and services, located in eleven towns across the Shire.

From these, 34 successful applicants will be allocated up to \$2000 from the rebate program.

Council is funding \$63,000 of a total of \$135,000 worth of upgrades, with participant businesses providing the remaining \$72,000. These businesses add to round one's program from 2021/2022, which led to 34 completed projects.

Bass Coast Mayor, Cr Michael Whelan, said the program will assist businesses and service providers in Bass Coast to brush up the appearance of their shopfronts and building facades – which benefits visitors and residents.

Cr Whelan said that vibrant and attractive streets, shops and public spaces play an important role in creating prosperous town centres.

"We want to do everything we can to bring people back to our towns.

"This makeover of our high streets

is one important way Council can encourage their return. We rely so heavily on the visitor economy in Bass Coast, so it will be great to see these projects come to life, then witness the difference made to these businesses."

Grants were awarded to:

**Cowes:** Beach HQ, CCs Fish and Chips, Cowes Curry Club, Cowes Veterinary Surgery, It's a Sweet Thing, Brinnie T Design, Mod Easley Cantina, Offshore Design Furniture and Homewares, Rusty Water Brewery Restaurant and Bar, Sambreros Tex-Mex Cantina and Fortuna Noodles Express.

**Newhaven:** The Ivy Plant Studio and The Seaside Provider.

**San Remo:** San Remo Fisherman's Co-op, Sanny Side and Sanny Social 157.

For more information and the full list of recipients: [www.basscoast.vic.gov.au/shopfrontrebate](http://www.basscoast.vic.gov.au/shopfrontrebate).



San Remo Fisherman's Co-op is one of 16 Phillip Island and San Remo businesses to be awarded a grant for shopfront upgrades by Bass Coast Shire Council. In total, 34 businesses across the shire received a grant.

## LETTERS TO THE EDITOR

Tell us your views with a Letter to the Editor (350 word limit). Email to [advertiser@pisra.com.au](mailto:advertiser@pisra.com.au), or submit online at [pisra.com.au](http://pisra.com.au)



### Women heart disease warning

This February is REDFEB, heart awareness month. In addition to encouraging people to wear red and donate, Heart Research Australia is raising awareness about the underdiagnosis and undertreatment of women with heart disease.

Heart disease is not just a man's disease. Globally, it is the number one killer of women, and we've found over recent years that women are doing worse after their heart attacks, they're more likely to have another heart attack, and more likely to die or have heart failure than men within the five years following their heart attack.

Time is critical and a huge issue with women is the delay to treatment. Women go to hospital later after symptoms start, which reduces the window of opportunity for effective treatment and increases the risk of complications and damage to their heart. Women also tend to develop symptoms of heart disease at a much later stage of the illness than men and their symptoms are often vaguer. Some feel extremely tired or short of breath. Other atypical symptoms include nausea and abdominal, neck, and shoulder pain.

It is important for women to know that early menopause, inflammatory conditions such as rheumatoid arthritis and lupus, and complications during pregnancy - such as pre-eclampsia, hypertension, and gestational diabetes - are all important risk factors for women. So, if you are a woman over 45\* please have a heart health check with your GP and discuss your obstetric history with them if you have had children. This enables proactive prevention to be taken to reduce risk. (\*Over 35 for Aboriginal and Torres Strait Islander peoples).

Heart Research Australia aims to reduce the devastating impact heart disease has on families and the community by supporting world-class and emerging researchers to conduct ground-breaking research into the prevention, diagnosis and treatment of heart disease. For more information or to donate, please visit [www.heartresearch.com.au](http://www.heartresearch.com.au)

On behalf of the thousands of Australians impacted by heart disease every year, thank you for your support.

Nicci Dent, CEO, Heart Research Australia

### Why buy here?

Why did ratepayers purchase or build homes in Sunderland Bay and Surf Beach Estates? Was it for sealed roads and underground drainage? The definitive answer is no. It was

for a relaxed slow paced liveable environment with slow moving traffic and abundant wildlife. If you wanted suburbia and speed humps, Cape Woolamai or Cowes would be better suited to the lifestyle requirements of people who want underground drainage and sealed roads. The reason people are door knocking in the estates is to find out if you want the scheme to proceed in its present form or not. If you want the sealed roads and believe underground drainage will solve all of your drainage issues, that is your choice and we accept your choice, as you should respect ours. I had an enjoyable 15-minute conversation with a builder and his wife, yes voters, where they explained why they want the scheme. At the conclusion of our talk this person stated that he enjoyed our talk and also praised another female member of our group who had previously visited for not trying to push our views onto them. We are not bullies as claimed, if you don't want to talk to us we will gladly leave your property. Our grievance is with BCSC's failure to adhere to council's own Community Engagement Policy. The way this special charge scheme is structured, council has all of the contact details of ratepayers and only publishes information that will favour council's argument. The No group have no access to property data and our only option is to door knock to see if there are people in our area that oppose the scheme. The yes for change ratepayers, are odds-on favourites to get what they and Council want and that is for the scheme to proceed. Council's aim is not to make our estates more liveable, the aim is to increase rate revenue. It is good that people in Bass Coast are taking an interest in our plight as ratepayers of Smiths Beach are next on Council's Special Charge Scheme.

Philip Davy, Surf Beach

### Covered in dust

My daily walks around Surf Beach and Sunderland Bay become harder and harder each day. Why? Because I am literally covered in dust each time. I cannot open any windows or doors for fresh air in my home otherwise the road dust floats in. I cannot spend any time relaxing on our outdoor deck because of the floating dust generated by the cars and roads. Constant blocked sinus as do many other residents suffer from including related health problems.

So, I would like to send a big sarcastic "thank you" to those behind the Say No campaign who are fighting against the special charge scheme for Surf Beach/Sunder-

land Bay. If the scheme does not go through, Bass Coast Shire Council will move on to the next estate being Smiths Beach. They will leave us in the same quandary that Sunset Strip has been dealing with for years since they rejected their scheme. And in years to come we will again be presented with the scheme - but at a far greater cost.

Michelle Joseph, Surf Beach

### Inaccurate assertions about Say No

Last week's letters to the editor contained some inaccurate assertions and misinformation about the Say No group and its goals.

The group is indeed seeking to stop the Special Charge Scheme in its current form.

What some letter writers fail to understand or acknowledge, is the Say No group is very much wanting to address dust and drainage issues, which we acknowledge are a serious health concern for many locals.

We seek to stop BCSC's current scheme as presented, because it adopts a "sledgehammer to crack a walnut" approach to solving these concerns. Are hard edged bitumen roads, concrete footpaths and guttering, lampposts, speedhumps and other speed control features etc, really necessary to solve the dust and drainage issues? No. Those issues can be dealt with in more environmentally sensitive ways without the above-mentioned superfluous features that BCSC seeks to force on ratepayers. To assert in a letter that "the scheme is the only permanent solution to stop the dust, fix the drainage and potholes" is entirely untrue. BCSC has refused to consult with the Say No group to discuss or address any alternative solutions to the dust and drainage issues, despite repeated requests.

How is this constructive "community consultation"?

The letter writers also asserted that the Say No group's estimate of \$30,000 per property was a "scare tactic" based on nothing!

Let's check the numbers.

Last year the Sentinel Times reported BCSC released a project cost estimate of between \$26.5 and \$32.4 million dollars.

The two suburbs have approximately 1050 ratepayers (and I say "approximately" because each time we ask BCSC, they give us a different figure. Why is that?). By dividing BCSC's low figure of \$26.5 million amongst 1050 ratepayers, we get a figure of just over \$25,000 each. If we use the BCSC's higher figure of \$32.4 million, the cost per ratepayer jumps to just under \$31,000. Simple maths, really.

So, as BCSC mentions in each newsletter, there is indeed "some misinformation about this project out in the community".

Where it is coming from however, is an interesting question in itself.

Ross Bencraft, Surf Beach

### Do not underestimate road cost

What are people trying to achieve by seriously underestimating the potential cost of the proposed road project for Surf Beach/Sunderland Bay?

Here are the facts - from the Council website - and some simple maths.

Their three options range from \$25.5 million at the bottom end of Option 1 to \$32.4 million at the top end of Option 3. Spread across the 1033 ratepayers in the original survey averages to between \$24,000 and \$31,000 per household.

Council has so far given no indication of what, if any, contribution they will make. Applying the Pioneer Bay contribution of a whisker under eight per cent reduces the range to between \$22,000 and \$28,500 which averages to a \$25,250 charge per household.

Who knows what the actual cost will be if the scheme goes ahead given what has happened to costs over the last six to eight months. Capital works projects have an appalling tendency to run well over budget. Further, the charge is not fixed as the legislation lets council charge up to an additional 10 per cent for any cost blow outs.

Please read the Council Financial Hardship policy. Do not assume they will waive the charge in its entirety. Council may charge interest "discounted to half (50 per cent) of the prevailing statutory penalty interest rate" and the "debt will be a charge against the property and must be repaid in full when the property changes hands by way of sale or other means."

You may eventually have to pay - with accumulated interest.

Alternatively, you can pay by instalments but with interest. The rate charged on the 2018 Pioneer Bay scheme was 3 per cent. We all know what has happened to interest rates over the last six to eight months. Assuming a generous interest rate of 4 per cent, you'll owe another \$1000 by the end of year one.

People who think the cost might be something like the \$18,000 average that applied in Pioneer Bay are kidding themselves or others. Why?

Make no mistake. This scheme will cost much, much more. Council says so. Don't say you didn't know.

Ray Cummings, Surf Beach

### Generating discontent

Thank you Bass Coast Shire for the very poor positioning of the diesel generator at the entrance to the bus transfer in Church Street.

It has been running constantly since Christmas, keeping us and others around the area awake at night and rattling windows. What poor planning and lack of thought for the people who have to endure this. Not good advertising for a holiday destination.

Deborah Wearne, Drouin

### Who is responsible?

Recently an unknown contractor trimmed the undergrowth on a number of the walking tracks at Scenic Reserve. It was obvious the work was done carelessly and fast. Many small native trees (shrubs) were destroyed, broken, and left. A couple of weeks later the unsightly mess remains.

Both the Shire and Nature Parks, who share responsibility for looking after the Reserve claim they do not know who caused the destruction. This is not good enough.

Jan Fleming, Surf Beach

### Continuing red bin saga

A recent report in this paper suggested that more residents than previously support the fortnightly red bin collection system, apparently on the basis that they believe that it is best for the planet and that they have learned to change their behaviours.

The logic underlying cutting red bin collections to fortnightly seems confused. Many would take the view that, particularly over the holiday period, the disappearance of red bin collections in the alternate weeks does not make what would otherwise have been in them disappear, even with reasonable care about appropriate use of the other bins. This uncollected waste still finds its way into landfill one way or another, whether via the transfer station or by other means. Some holiday homeowners take it back with them to Melbourne after weekends and put it in their landfill bin in Melbourne, transferring responsibility for disposal to their urban council.

The fact that there is uncollected waste and that it does not just disappear, appears to have been recognised by the council decision allowing residents to obtain a second red bin or a large bin - if they pay for it.

On this basis the issue is not saving the planet, but is about money - and also whether the council is properly fulfilling one of its core responsibilities, collection of rubbish.

A T Lumb, Ventnor



Tony Eltherington (centre) skips a charter boat on the Mentawais and popped in to watch some of the Surfing Teams Challenge with Mal Gregson (left) and Andrew Lidsey.

## Surf legend takes up the Challenge

The weekend's Surfing Teams Challenge had a special guest in the audience.

In surfing circles, Tony Eltherington is somewhat of a legend and is well known to many local surfers who have taken his surf tours of the Mentawais.

Known for his own surfing history and his current life as a charter boat skipper, Tony also hit the headlines back in 2013, when he helped rescue a South African man, Brett Archibald, who was lost in Indonesian waters for 27 hours.

Most years, Tony splits his time between Queensland and Indonesia, usually spending 10 months of the year in Indonesia.

This week, he was back in Australia, visiting mates on Phillip Island and local surf identity Mal Gregson brought Tony along to Woolamai to the Surfing Teams Challenge.

It was the last day of a 12-day visit to the island, which had seen Tony shape boards at Island Surfboards and visit friends who are regulars on his Mentawais boat.

"This is my first visit to Phillip Island in 23 years," he told the Advertiser.

"It is great how you guys are keeping the development off the beaches."

He lamented the over-development of the Gold Coast – "you don't want the Gold Coast high rise here" – and said he loved that the island

was fighting to keep development away from the coast.

He congratulated the work of the National Surfing Reserve to look after the local breaks, "it's a great thing you're doing" and was full of praise for Island Surfboards and their support for local board shapers.

"It's still got a country feel here," he said, adding he hoped to return next year and do some more boards, including custom orders.

After taking in some local surf action, he was heading back to Queensland, but on his way off the island, he was stopping for a scallop pie.

"It's my last hurrah on Phillip Island."



Overall winners from the weekend's club championship.

## January clay target shoot results

Westernport Field and Game held the Stan McFee memorial club championship on Saturday 14, and Sunday 15, with 83 shooters competing on Saturday and 102 shooters on Sunday.

Three rounds of 33/33/34 were shot Saturday and two rounds of 38/37.

With Julian Lieshout, Wade McGirr and Bobby Jacobsen shooting the perfect 25/25 on Saturday and Robert Passarin and Brian Sartori on Sunday.

Gold sponsors for the event were Betsy's Glass, Plumbers Now Contracting and sponsors Cowes TV & Antenna Systems and J&K Handyman Services.

### Overall scores

Club champion and high gun, Jar-ryd Passarin with a score of 161.

Grade winners were:

**AA grade:** 1st Robert Passarin (159), 2nd Alan White (158) and 3rd Wade McGirr (156).

**A grade:** 1st Matt Harris-Spencer (159), 2nd Bobby Jacobsen (155) and 3rd Julian Lieshout (152).

**B grade:** 1st Nick Trajkovski (128), 2nd Trevor Columbine (127) and 3rd Jarvis Atkinson (126).

**C grade:** 1st Sam Columbine (126), 2nd Anthony Koumis (113) and 3rd Jai Derrick (112).

**Veterans:** 1st Lionel Bradley (143), 2nd Warwick Cumberland (119) and 3rd Danny Genovese (96).

**Ladies:** 1st Sarah Fritsch (135), 2nd Anna Wratten (135) and 3rd Brooke Tangey (134).

**Juniors:** 1st Will Witkowski (148), 2nd Mitchell Briscoe (78) and 3rd Brianna Tangey (42).

Our next shoot is on Sunday, February 19, consisting of 75 targets with nominations commencing at 9:30am.

MCC Field and Game will again join us in a friendly inter club competition.

Self-nominations will be available

through MCMS before the event.

Clay target shooting is suitable for all genders, ages and fitness levels with juniors shooting for free.

### Clubroom opening

Back in 2019 before Covid-19, our modest little club was number nine in Australia for the number of targets thrown in simulated field competition.

With the increase in participants, we saw the need to improve our clubrooms, and with the fourth round of Shooting Sports Facilities program available, we made a decision to do just that.

It has taken about six months to build our improvements, with one of the wettest six months we have had.

Despite all the mud and toil, it has been worth every penny and drop of sweat.

The club members contribution of volunteer labour and materials added up to a value of over \$100,000 on top of the Shooting Sports Facilities grant.

Our club and community have made a massive effort, which has strengthened the club and our membership.

The club thanks everyone who has helped with the project.

Over the weekend of the Stan McFee memorial club championship on January 14 and 15, the club capitalized on the event by inviting Melina Bath MP, the Nationals member for Eastern Victoria region and Shooters, Fishers and Farmers Jeff Bourman MP, to open our new facility.

Jordan Crugnale MP, member for Bass, was unable to attend.

We have doubled the size of the clubroom and improved all facilities including a new office, toilets and disabled access.

The new landscaping around the clubrooms will make the surrounds look first class.



This week's winners were Robyn Coulson (3), Tony Heppleston (S) and Shirley Corcoran (L).



Best one game winners were Terry Floyd (S), Michael Saunders (3) and Tony Morris (L).

## Southwest Gippsland midweek bowls

Lovely to see 30 of our bowls family turn up for our weekly challenge, it is a good day when the numbers are reasonably high.

The morning started off a tad cool but not too hot, not too cold, and not wet which means everyone was happy with the weather.

Some great bowling across all the greens.

A few of our bowlers are still getting used to Corinella's new green, but the day went a long way towards having everyone settle in and understand it.

Quite a bit of laughter and bantering across all the greens as usual.

Over the day the wind came and went which added to the fun for the day, very few wrong biases today, but the RCH tin continues to grow.

Today's winners on 36 points were: Tony Heppleston (S), Robyn Coulson (3) and Shirley Corcoran (L).

Runners up on 35 points were: Margaret Hoy (S), Laurie Bell (3), Bev Elliott (2) and Cheryl Floyd (L).

Best one game winners for the day were Terry Floyd (S), Michael Saunders (3) and Tony Morris (L).

Once again, a big thank you to Peter and Pauline McWilliams for

all the hard work they do, both on Thursdays at the clubs, as well as over the course of the week.

Thank you to John for his Master of Ceremonies duty each week and to Lance for looking after the bar for our thirsty players today.

Next week (Australia Day) we will be playing at San Remo.

We are looking forward to some good numbers but understand that some members will be missing to attend family affairs.

If all members could be on site by 10am for a 10.30am start.

Looking forward to seeing everyone next week.



Robert Passarin (President), Bill McFee (Vice President), Melina Bath MP, Jenn Wade (Secretary) and Jeff Bourman MP opening the new clubroom.



Local tennis coach Paul Rowbottom with local junior comp players from San Remo and Phillip Island took part in the "Hot Shots on Court Showcase" at Rod Laver Arena on January 19.

## Our tennis juniors play on Rod Laver Arena

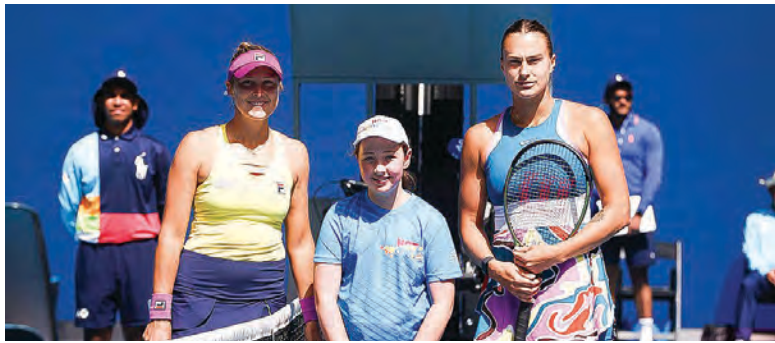
Local tennis coach Paul Rowbottom of Innovative Tennis Management and local junior competition players from Westernport Tennis Club (San Remo) and Phillip Island Tennis Club (Cowes) had the huge honour of playing on Rod Laver Arena at the Australian Open moments before the world's best players hit the court on Thursday January 19.

The "Hot Shots on Court Showcase" is a Tennis Victoria initiative offered to Paul and the HotShot players from both clubs. Players showcased their tennis skills to the excitement of the Rod Laver Arena crowd.

Section 4 KDTA Players from Phillip Island Tennis Club were Jody Medlar, Charles Cameron, Elijah Tuyay, Leroy Cassells and Harry Pardoe.

Players from Westernport Tennis Club were Tijian Coldora, Zac Coldora, Edith Rowbottom, MacKenzie Luz and Gemma Van Den Broek.

Gemma Van Den Broek of Westernport Tennis Club was also afforded the honour of tossing the coin for the women's second round match on Rod Laver Arena between world number



Gemma Van Den Broek of the Westernport Tennis Club was also afforded the honour of tossing the coin for the women's second round match between world number two Aryna Sabalenka and world number five Shelby Rogers.

two Aryna Sabalenka and world number fifty one Shelby Rogers.

"This was an absolute thrill for our young tennis players, they were jumping out of their skin with excitement," said Paul.

"For our junior players to play on one of the most famous courts in the world was a huge honour, it will be a memory that will last a lifetime for all involved."

Phillip Island has been a hive of

tennis activity this January with junior tournaments run at Westernport Tennis Club and Newhaven College, as well as holiday clinics for local players and holiday goers at Phillip Island Tennis club.

Tennis coaching and competition starts up again at the end of January.

Local head coach Paul Rowbottom can be reached at [innovativetennis-coaching@gmail.com](mailto:innovativetennis-coaching@gmail.com) for any coaching enquiries.

## Seasons greeted

After two years of disruptions caused by COVID-19, the Phillip Island Tennis Club was delighted to successfully complete the 2022 season of its Tuesday night men's competition.

Despite a year of unusually high levels of rainfall, only one match was

cancelled due to rain.

Thirty-three players participated in the autumn season, and the Grand Final was a nail-biter with team 'Moderna' grabbing victory by just two games.

Forty-one players participated in the spring season which also saw a close Grand Final with team 'Kooka-

burras' just four games ahead at the end of the night.

The 2023 autumn season will commence in late February and players interested in participating can contact Rod Shell ([rasandas@hotmail.com](mailto:rasandas@hotmail.com)) or come down to the club (located on the corner of Chapel Street and Dunsmore Road, Cowes) from 6pm on Tuesday nights to join in the inter-season social tennis which will run from now until the start of the new season.



The Kookaburras won the Spring season Grand Final by four games: Stephen Russell, Rod Shell, Craig Kent and David Rooks.



Team Moderna – Matt Thornborrow, Craig Kent, Lawrence Ferrari and Michael Thornborrow – won the Autumn season Grand Final in a nail-biter, grabbing victory by just two games.



Robyne Lunn beside the display of Margaret Court's trophies near her special court.

## Tennis club's trip to Oz Open

Last Thursday, January 19, over forty members and friends of the Phillip Island Tennis club enjoyed a day out at Rod Laver Arena at the Australian Open.

Due to only digital tickets being distributed, many had great difficulty transferring them onto their phones, fortunately most were able to find a tech savvy person to assist with this.

However a couple who hadn't had such assistance had to wait in a queue at the Ticketmaster kiosk near John Cain Arena to obtain a printed copy before they could enter the grounds.

This meant that by the time they were able to reach their seats, most of the first match, a ladies' single between Shelby Rogers and Aryna Sabalenka who is still in the running, was missed.

This was followed by a thrilling, hard-hitting men's singles match between Jenson Brooksby and second seed, Norwegian, Casper Ruud who was defeated in four sets.

The final match for the days sessions was between Canadian, Leylah Fernandez and Caroline Garcia from France, who was the eventual winner in a close fought battle.

This meant that it was nearly 7pm before we left our centre court seats, so had to pass through the crowd waiting to take their seats for the night matches.



The view of centre court from our seats during the men's singles match.

No wonder the crows had a late night and early morning with Andy Murray's match finishing at 4am!

We're most grateful to Ross, our driver, for allowing us to wait until after the last match before heading back to Cowes.

Although it was a long day, it was most enjoyable.

## Phillip Island golf results

### Tuesday, January 17, Mens 18-hole stableford

A grade winner was Ron Young (10) with 71 nett C/B from Chris Reynolds (6).

B grade winner was Joel Panozzo (16) with 68 nett from Matt Goss (19), with 69 nett.

C grade winner was Heath Kolac (23) with 65 nett from Peter Gray (24) with 74 nett C/B.

BDL to 74 C/B.

NTP: 5th Mark Dykes, 7th Robbie Gore, 10th Heath Kolac and 17th Craig O'Neill.

### Tuesday, January 17, Mens 9-hole stableford

The winner was Ron Hately (29) with 21 points from Rick Banfield (10) on 19 points C/B.

### Wednesday, January 18, Ladies 9-hole stableford

Winner was Jan Farmer (45) with 18 points.

### Wednesday, January 18, Ladies 18-hole stableford

A grade was Helen Coghlan (16) with 37 points.

B grade was Mary Taylor (27) with 37 points.

C grade was Robyn Docker (35) with 45 points.

NTP: 5th Cheryl White, 7th Kaye Huther, 10th Tracey Cuff, 17th Cheryl White and 12th Jill Zellman.

BDL to 32 points countback.

### Thursday, January 19, open 9-hole stableford

Winner was Steve Rieger (19) with 21 points.

### Thursday, January 19, open 18-hole par

A grade was Jack Ross (12) with +5 and the runner up was Ian Smith (9) with +2.

B grade was Mike Fitzmaurice (17) +5 and the runner up was Stephen Mack (17) +3.

C grade was Geoff Williamson (30) +1 C/B from John Gill (30).

BDL to square C/B.

NTP: 5th Anthony Shannon, 7th Mike Fitzmaurice, 10th Craig Purcell and 7th Ada Anglin.

### Saturday, January 21, stableford Mens results:

A grade winner was Jim Richardson (12) with 39 points C/B from Jack Ross (1).

B grade winner was Daryl Vernon (15) with 42 points from Rob Davison (14).

C grade winner was Don Stewart-Uden (28) with 42 points from Adam Wagner (30) with 39 points.

BDL to 35 points C/B.

NTP: 5th James Bain, 7th Steve Bann, 10th Don Stewart-Uden and 17th Lenny White.

Nine-hole winner was Paul Kelly (11) with 22 points from Len Fenton (12) 20 points.

BDL to 18 points C/B.

### Ladies' results:

Ladies' competition winner was Dawn Andrews (2) with 38 points C/B from Kym Cooper (34).

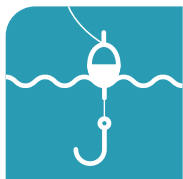
NTP: 5th Deb Orr, 7th Lesley Meadowcroft, 10th Sue Brown and 17th Pip Holloway.

BDL to 34 points C/B.

### Sunday, November 27, 18-hole stableford

Winner was David Henderson (14) with 36 points.





# AROUND THE BAY

WITH JIM'S BAIT AND TACKLE

With the holidays drawing to a close this weekend, this will be it for a month or so for many as they get back into work and school.

The best part is we are entering what is usually the best time of the year around this area, February to June.

Traditionally this time has some of the most settled weather and some of the best fishing in terms of variety for the whole year.

Offshore opens up for the smaller boats to get amongst the flathead and of late even tuna and kingfish. Heading into the bay isn't a waste either, with plenty of schools of bait fish providing food for bigger fish as well as whiting and hopefully a second run of snapper.

The flathead in the bay have grown up over the last few years, it's almost worth targeting them across the coral area.

Gummies will come and go all year round so you always have a chance of a bigger one and we should start to see the elephant fish show up soon.

We get questions in the shop all the time, and please keep them coming, some we just can't answer so we chase up the answers. Recently we were asked about people fishing from jetties at boat ramps, with of course, 10 different opinions so we sent off a couple of emails to get the correct answer.

The answer below applies to the current time but check ahead each time you head down to the boat ramp in case the regulation has changed, and keep in mind your obligations.

Ultimately the answer is if there's no sign then fish away, from the boat ramp, jetty, pontoon or even ramp.

The only obligation is under the Local Ports law (Port Management Regulations 2015) that states in section 53, "Retrieval of fishing rods and fishing lines when vessel approaching wharf: a person who is in possession of, or in charge of a fishing rod or fishing line on a wharf in a local port must ensure that the rod or line is retrieved from the water and any space between the wharf and a vessel approaching or departing from that wharf."

So, the offence is not winding your line in. It's unclear if the council have any intention to change the situation at Rhyll and ban fishing, similarly to Newhaven.

We're also asked about the images we put on our social media and why we don't give the exact position where the fish was caught.

We get sent photos all the time and have built a trust from our customers over the years not to give out exact locations if asked not to (also the reason we won't put GPS marks in these reports).

We have all seen how the release of GPS coordinates on social media ends ... boats all over each other and creating dangerous situations.

We give out many GPS marks in the shop, but they are intended as nothing more than a starting point.

Thank you to all those who do send in photos for others enjoyment and we fully respect the work you have put in to be successful. Keep them coming there is plenty of room on the photo wall.

## Fishing report

Writing a fishing report is more difficult now than it has ever been because the fishing is so good.

Although not everyone that heads out is catching something, the reports we are receiving are making up for that and adds to the argument of just how healthy the waterways are.

Starting offshore, the tuna, kingfish, sharks and flathead are all very good, especially tuna, people are seeing more than they are catching.

Tuna reports are coming from western entrance through to Inverloch, ranging from 12m to 40m of water.

Some days we get reports from these areas collectively and others they seem to be concentrated in one area.

There is still a bit of work involved and plenty of fuel needed, but patience and perseverance will pay off.

Small skirts are still the most popular means of catching, with white and king brown co-



Elyse, formally from the San Remo Hotel headed out on the ladies' charter with Island Offshore Charters on Sunday and managed to reel in this quality tuna.

loured hard bodies also working.

It will be rare that you catch them on the first choice of lure you put in the water and important that you keep switching it up if you are on the fish and they are not biting.

You might wind up catching them on your original set after you switch back. Keep a rotation of colour and type until you see results.

Don't drive past the fish on your way to a destination either. Once you leave the entrance, place your lures in the water, you might just pick them up closer than expected. Catching them early means you could also catch a bag of flathead before you head home, especially if you have a big kill tank or a cool bag to keep your tuna fresh.

Kingfish have been primarily seen with the tuna, with multiple reports

from the normal kingfish spots now starting to be productive.

Look for the big barometer changes, this brings on the bigger kings.

Flathead reports have been good but have reverted to the smaller groups.

You will need to drift over until you find them, keep going back over them. If the weather has been rough, they will be deeper at 50-60m, however once it calms down you will find them closer to the surface at 20-30m.

Coming back to the bay, we didn't really see any snapper season with the state of the weather throughout November. Everyone is waiting to see if we get a second run throughout late February and March.

In the meantime you will have to put up with 40cm pinkies and mid 40cm whiting as well as the thousands of undersized pinkies now in the bay.

The whiting just doesn't seem to be running out, with both numbers and quality still standing.

With all the boats around Rhyll, there has been better results both on the bank back towards Churchill Island and in the deeper water toward the end of the Rhyll channel.

We are seeing a few good reports again from Dickies Bay and Cleeland Bight with the lighter traffic.

Snapper reports have been a little more random, primarily coming from out on the corals, but also from those who are fishing the edges of the channels for gummies.

Throughout this week and the Australia Day weekend we will still be open early.

As of next week we will be going back to normal shop hours, just check our social channels for times.

On Tuesday, January 31, they are replacing the power pole out the front of the shop, therefore not only will we have no power but no parking also so we will be closed.

# Specialist coaching for spin bowlers in Gippsland

Spin bowling in cricket has long been regarded as a potent force in the game.

This was reaffirmed in Australian cricket by the avalanche of wickets taken by Shane Warne and the steady flow of dismissals by current spinner, Nathan Lyon.

In the Australian women's cricket team, leg-spinner Alana King has made a real impact.

Although the stars of Warne, Lyon and King have shone brightly for Australia in international cricket, most people don't realise the art of spin bowling is a difficult one, requiring consistent coaching and hours of dedicated practice.

It is heartening to see that local spin bowlers are now able to access the advice and direction that enables emerging bowlers to learn the craft of spin bowling.

Under the direction of Charith Keerthisinghe, the outstanding Phillip Island spinner and Cricket Victoria's junior director of coaching for the Gippsland

region, specialist coaching sessions are being conducted to assist to identify and develop future spin bowlers.

Before moving to Australia from his native Sri Lanka, Charith was a successful spinner who benefited from his inclusion in specialist spin bowling squads, and he understands the levels of support that are essential to guide bowlers in the right direction.

The first spin clinic was conducted by Charith at Inverloch on 20 December 2022, where an aspiring group of talented players received specialised coaching and direction.

Plans are in place to continue to refine these specialist spin bowling squads in coming months.

Cricket is to be applauded for initiating such constructive directions to assist spin bowlers to develop and have a bigger impact on the sport.

Let's hope that budding star spinners in the Warne, Lyon and King mould continue to grow and emerge.

Hand Crafted on Phillip Island

# Island Beer



Order Online For Free Island Delivery

[www.islandbeer.com.au](http://www.islandbeer.com.au)

## CASUAL TENNIS COURT HIRE

RHYLL

\$15.00 per hour

Bookings General Store

5907 6796

BBQ facilities available in Rhyll Park

## Phillip Island Football Netball Club 2023 season is coming!!!

Senior player registration day Sunday 5th of February at 3pm. (D,C,B,A grades)

Registration and tryout games.

2023 Trials registration is now open for all junior teams.

Register via the link below before 5:00pm Friday 3rd February.

Dates:

Sunday 5th February

Sunday 12th February

Important information:

- My Netball registration must be paid prior to trial
- Attendance at 1 trial session is compulsory for all age groups and teams. Attending 2 is even better!
- If numbers allow we will be entering second teams in the Leongatha & District Netball Association. This competition season aligns with WGFNC season, LDNA support teams from other local football leagues and importantly it is good to support our regional netball competitions.

Any queries regarding the 2023 season please contact Netball Operations directly on 0404 019 852.



PHILLIP ISLAND BULLDOGS FOOTBALL & NETBALL CLUB

# TIDE GUIDE

Tidal predictions for Stony Point, Cowes -0.09 Newhaven -0.31 | HIGH TIDE IS MARKED IN RED

	WED 25 JAN	THU 26 JAN	FRI 27 JAN	SAT 28 JAN	SUN 29 JAN	MON 30 JAN	TUE 31 JAN
HIGH	4:31 am 3.09 m	5:19 am 3.11 m	6:02 am 3.08 m	6:42 am 3.02 m	12:43 am 0.67 m	1:28 am 0.83 m	2:12 am 0.98 m
LOW	10:10 am 0.84 m	11:00 am 0.65 m	11:46 am 0.49 m	12:30 pm 0.39 m	7:18 am 2.93 m	7:52 am 2.82 m	8:26 am 2.69 m
HIGH	4:27 pm 2.74 m	5:26 pm 2.83 m	6:21 pm 2.87 m	7:14 pm 2.87 m	1:12 pm 0.35 m	1:52 pm 0.36 m	2:31 pm 0.42 m
LOW	10:15 pm 0.33 m	11:07 pm 0.40 m	11:56 pm 0.52 m		8:03 pm 2.83 m	8:51 pm 2.76 m	9:39 pm 2.68 m

All material is supplied in good faith and is believed to be correct. No responsibility or liability for errors or omissions is accepted.



## PHILLIP ISLAND MARINE

NEW & USED BOAT SALES

14 Beach Road, Rhyll

OPEN 7 DAYS

PH: 5956 9238

[www.phillipislandmarine.com.au](http://www.phillipislandmarine.com.au)

# Sharks battle for win

## B2 Cricket

B2 hosted Glen Alvie at Rhyll for the first time after the Christmas break, with a "must-win-game" if B2 wanted to stay alive in the finals race.

Glen Alvie won the toss and elected to bowl first.

Brady Ross and Kohen Beaumont started the Sharks off.

Within the first over, Brady hit one back to the bowler without troubling the scorers.

Captain Connor Epifano was then in, and they were able to create a great partnership of 84 runs.

With the score at 2/87, the Sharks knew they needed to get moving, as Rhyll tends to speed up after lunch.

Daniel McCausland came in and hit 17 off a handful of balls to try to push the run rate up.

The next few batsmen did not really trouble the scorers.

Tarryn Allan came out to try to steady the ship with Kohen.

Kohen ended up getting stumped, finishing with a solid 61.

Tarryn and Max Arceo saw out the 40 overs with an unbeaten 25 and 21 respectively, with the Island finishing on 7/182.

After lunch we saw the opening bowling team of Harry Arceo and Dan McCausland try and push for some early wickets.

After a quick start from Glen Alvie, Matt Parsons was brought into the attack to try to stem this barrage of 4s and 6s.

With a great spell of 4-42 off 8 overs Matt was able to get the Island back on track with some great catches from Tarryn and Daniel (who took one of the greatest catches you're ever likely to see).

Tarryn came into the attack, was able to dry up the runs, and finished with 4-12 off 8 overs.

Andrew Tolley then cleaned the tail end up with 2-16.

Phillip Island winning by 43 runs sees them right in the hunt to play finals.

## C2 cricket

The C2 Sharks travelled to Dumbalk to take on MDU on Saturday.

The Sharks lost the toss again and fielded first.



Drew Fusinato (R) made 11 n.o. and Aaron Brayley 38 n.o. in a match winning partnership during C1's battle against MDU at Dumbalk. Twelve-year-old Archie Williams (L) was the pick of the bowlers taking 2 for 17 off 6 overs.

The first wicket came early when Sachin did a brilliant piece of fielding to get a run out.

The runs dried up due to all the bowlers bowling well.

It wasn't until young leg spinner Archie Williams (2/17) grabbed two wickets, catches to Sachin and Paterson, that broke the game open.

MDU 3/38.

The batsmen put together a partnership and the score started to build.

Brayley (1/25) then got an LBW, and Paterson got a stumping off Francis (1/20) and after 35 overs MDU made 112.

The Sharks batting got off to a shaky start with Manning LBW for 1 and Francis bowled for 3 early on.

Excell and Paterson got things back on track until Excell was bowled for 19 and Paterson LBW for 9.

The Sharks were in some trouble at 5/38.

Cleary and Brayley steadied the ship and put on 35 before Cleary was LBW for 24, Sharks 6/73.

Drew Fusinato then joined Brayley and the pair put on a 40 run stand to get the Sharks over the line with two overs to spare.

Brayley, a match winning knock, 39 not out and Fusinato, who batted brilliantly, under a heap of pressure, the young champion finished with 11 not out.

A hard-fought win for the C2 Sharks.

**PHILLIP ISLAND**  
**7-182**

K. BEAUMONT  
C. EPIFANO  
T. ALLAN

**61**  
**48**  
**25\***

**B2 GRADE**

**GLEN ALVIE**  
**139**

T. ALLAN  
M. PARSONS  
A. TOLLEY

**4-12**  
**4-42**  
**2-16**

San Remo District, Cowes and Grantville & District Community Bank\* branches  
**Bendigo Bank**

PHILLIP ISLAND  
VERSUS  
GLEN ALVIE  
SATURDAY JANUARY 21  
REECE PLUMBING PARK - RHYLL

**PHILLIP ISLAND**  
**6-113**

A. BRAYLEY  
M. CLEARY  
G. EXCELL

**38\***  
**24**  
**19**

**C1 GRADE**

**MDU**  
**5-112**

A. WILLIAMS  
P. FRANCIS  
A. BRAYLEY

**3-17**  
**1-20**  
**1-25**

**reece**

PHILLIP ISLAND  
VERSUS  
MEENYAN DUMBALK UNITED  
SATURDAY JANUARY 21  
DUMBALK RECREATION RESERVE

**ALEX SCOTT  
AND STAFF**

9 WALDORF ROAD, COWES



- Situated in the family friendly Whytesands Estate
  - Open plan living with doors leading to a covered alfresco area
  - 3 bedrooms/2 bathrooms/2 cars
- \$890,000**

11 SUMMERHAYS AVENUE,  
CAPE WOOLAMAI



- Situated within walking distance to shops, restaurants and beach
  - Outdoor living space complete with pizza oven
  - 4 bedrooms/1 bathroom
- \$790,000**

3 HEYLEY AVENUE, VENTNOR



- Completely renovated on a large allotment, only 3 minute stroll to the beach
  - Fully fenced and gated with established gardens
  - 3 bedrooms/2 bathrooms/2 cars
- \$980,000 TO \$1,050,000**

**WE HAVE  
CASH  
BUYERS  
READY TO  
PURCHASE  
NOW!**

**CALL US  
TODAY FOR A  
FREE MARKET  
APPRAISAL.**

**HOLIDAY  
RENTALS  
REQUIRED**

113a Thompson Ave, Cowes  
[www.alexscott.com.au](http://www.alexscott.com.au)

**5952 2633**

HOME DELIVERY  
Call your local  
newsagency

ISSN 2200-100X



917722001000021

PHILLIP ISLAND & SAN REMO

**ADVERTISER**